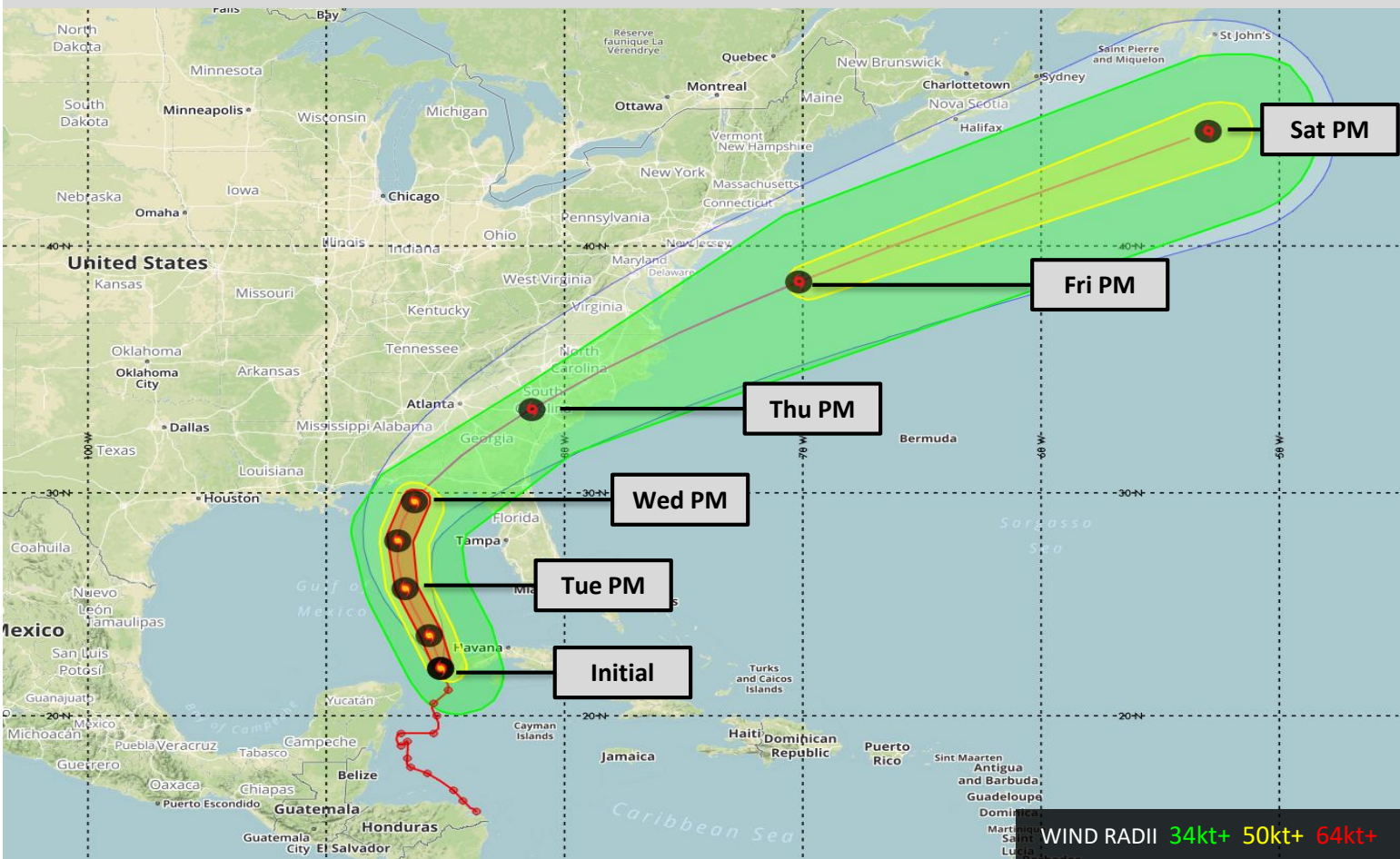


Storm Center	22.2N 85.2W (about 455 nm S of Apalachicola, Florida)			
Current Movement	N at 8 Knots			
Sustained Winds/Gusts	70 knots / 85 knots			
34 kt Wind Radii	120 NE	150 SE	80 SW	90 NW
50 kt Wind Radii	60 NE	50 SE	20 SW	50 NW
64 kt Wind Radii	30 NE	0 SE	0W	25 NW
Forecast Trend	Michael is forecast to become a major hurricane on Tuesday. Landfall is currently forecast for late Wednesday.			

FORECAST TRACK



Forecast Positions and Max Winds

Track Forecast Confidence: Average				Intensity Forecast Confidence: Below Average			
Storm Center	Local Time/Date	UTC Time	Position	Sustained Winds		Saffir-Simpson Scale	
Mon	Oct 8	1600 CDT 2100 UTC	22.2N 85.2W	70 KT 80 MPH		CAT 1	
Tue	Oct 9	0100 CDT 0600 UTC	23.7N 85.7W	80 KT 90 MPH		CAT 1	
Tue	Oct 9	1300 CDT 1800 UTC	25.8N 86.7W	95 KT 110 MPH		CAT 2	
Wed	Oct 10	0100 CDT 0600 UTC	27.9N 87.0W	105 KT 120 MPH		CAT 3	
Wed	Oct 10	1300 CDT 1800 UTC	29.6N 86.3W	110 KT 125 MPH		CAT 3	
Thu	Oct 11	1300 CDT 1800 UTC	33.5N 81.4W	40 KT 45 MPH		TS	
Fri	Oct 12	1300 CDT 1800 UTC	38.6N 70.2W	50 KT 60 MPH		TS	
Sat	Oct 13	1300 CDT 1800 UTC	44.2N 53.0W	55 KT 65 MPH		POST-TROPICAL	

Changes from Previous Advisory

There is no significant change to the previous forecast reasoning.

Marine Weather Impacts

Tropical storm force winds will expand outward to within 150+ nm over the eastern half of the circulation and out to 120 nm over the western half of the circulation through midweek. Hurricane force winds will expand outward to within 40 nm of the center over the next 12 hours.

Seas will continue to build across the Gulf of Mexico through Wednesday and Thursday. By Wednesday seas over the western GOM are projected to reach 7 to 10 ft. with the central GOM experiencing 14 to 20 feet, and 20 to 40+ feet for the eastern GOM.

Onshore Impacts

Tropical storm force winds are likely to reach portions of the US Gulf Coast from southern Alabama eastward through much of northwestern Florida during the early morning hours Wednesday. Conditions are likely to deteriorate in that area throughout the day with a narrow area of hurricane force winds coming onshore near the center Wednesday afternoon. **Extreme life-threatening coastal storm surge, severe winds, widespread power outages, and rain amounts in excess of 5-10 inches are likely. The highest storm surge values will be near, and immediately east of where the center makes landfall.** Beyond the Gulf Coast, interests from southern Georgia northeastward through the Carolinas and US Mid-Atlantic coast should closely follow the progress of Michael.



WeatherOps next advisory will be issued at 1900 CDT

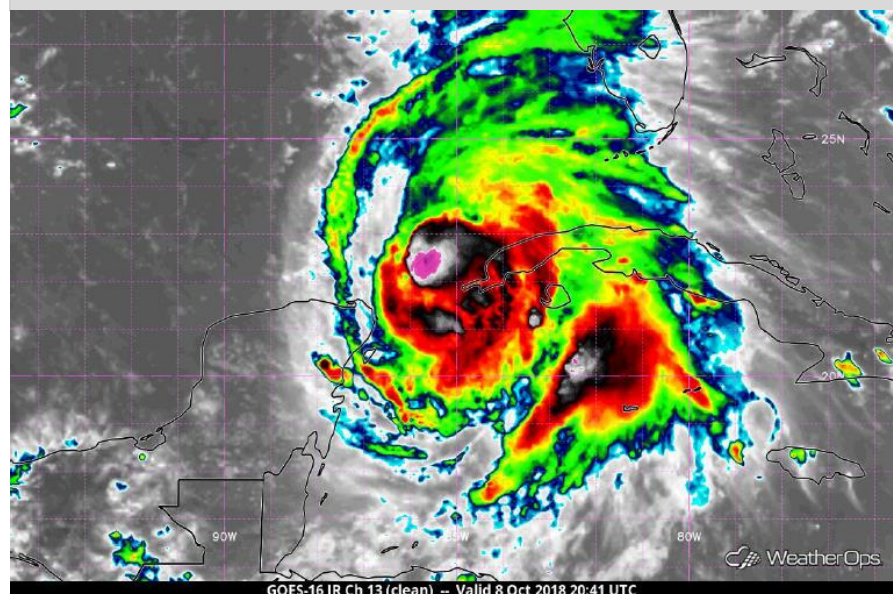
WeatherOps Forecast Discussion

Observational Perspective: Michael continues to become better organized while tracking northward. Environmental conditions remain favorable for continued intensification.

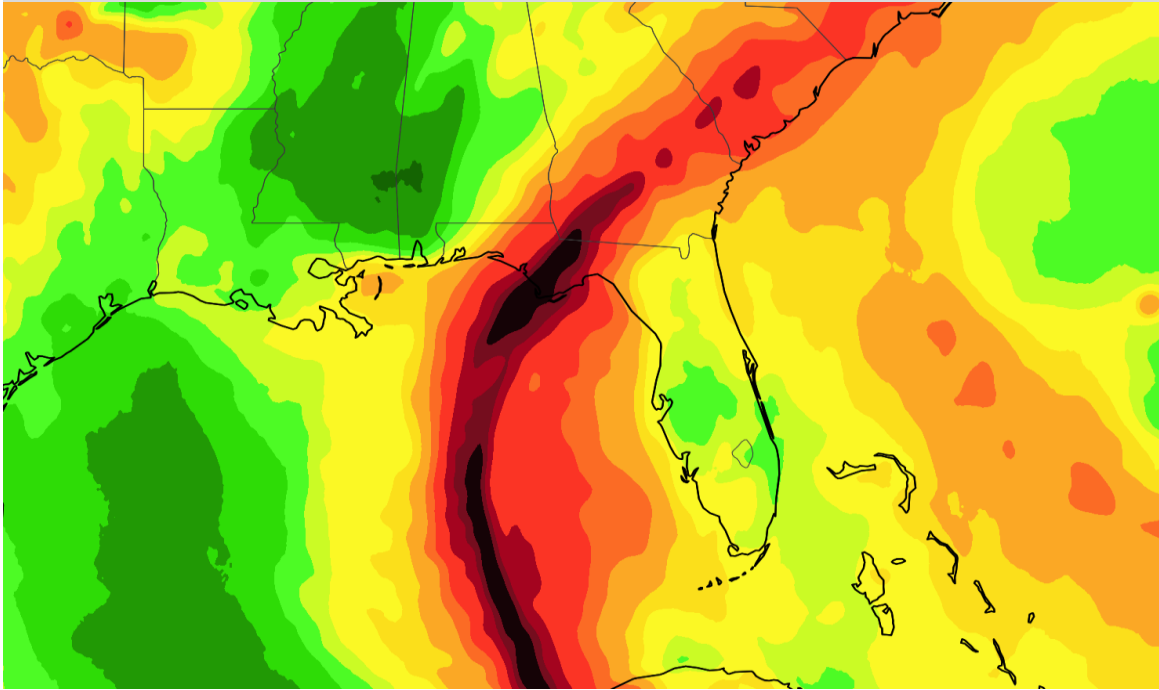
Intensity Forecast: Michael will continue to intensify through Wednesday due to the combination of above average SST's and modest wind shear. Current indications are that Michael is likely to become a major hurricane late Tuesday into Wednesday as it continues northward. Landfall is currently forecast to occur Wednesday afternoon or evening.

Track Forecast: Michael will continue on a northerly path toward the Florida panhandle through the next 48 hours. Guidance is in general agreement in depicting a landfall between Pensacola, FL, and Florida's big bend. This forecast update reflects a blend of the ECMWF and GFS solutions for the track over the Gulf of Mexico. The difference between those models' forecasts has decreased through the next 48 hours. It should be noted that the ECMWF forecast remains a bit farther to the west and would result in higher conditions extending slightly farther west than currently forecast should it verify. The timing of landfall remains somewhat uncertain but the difference between the ECMWF and GFS has decreased through Wednesday. Greater uncertainty still exists in the timing of the track along the US East Coast.

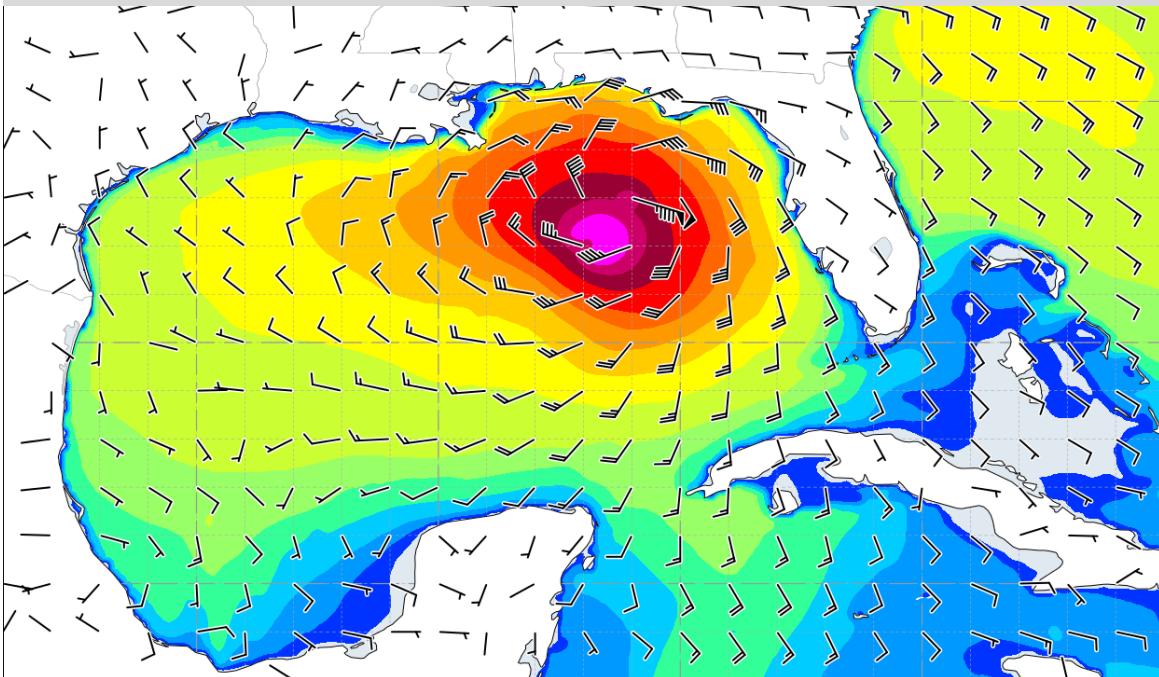
Infrared Satellite Image



WeatherOps Precipitation Forecast, Mon 8 October – Mon 15 October



WeatherOps Winds and Combined Seas, 1200 UTC Wed 10 October



Winds and Wave Heights
Valid 12z Wed Oct 10

