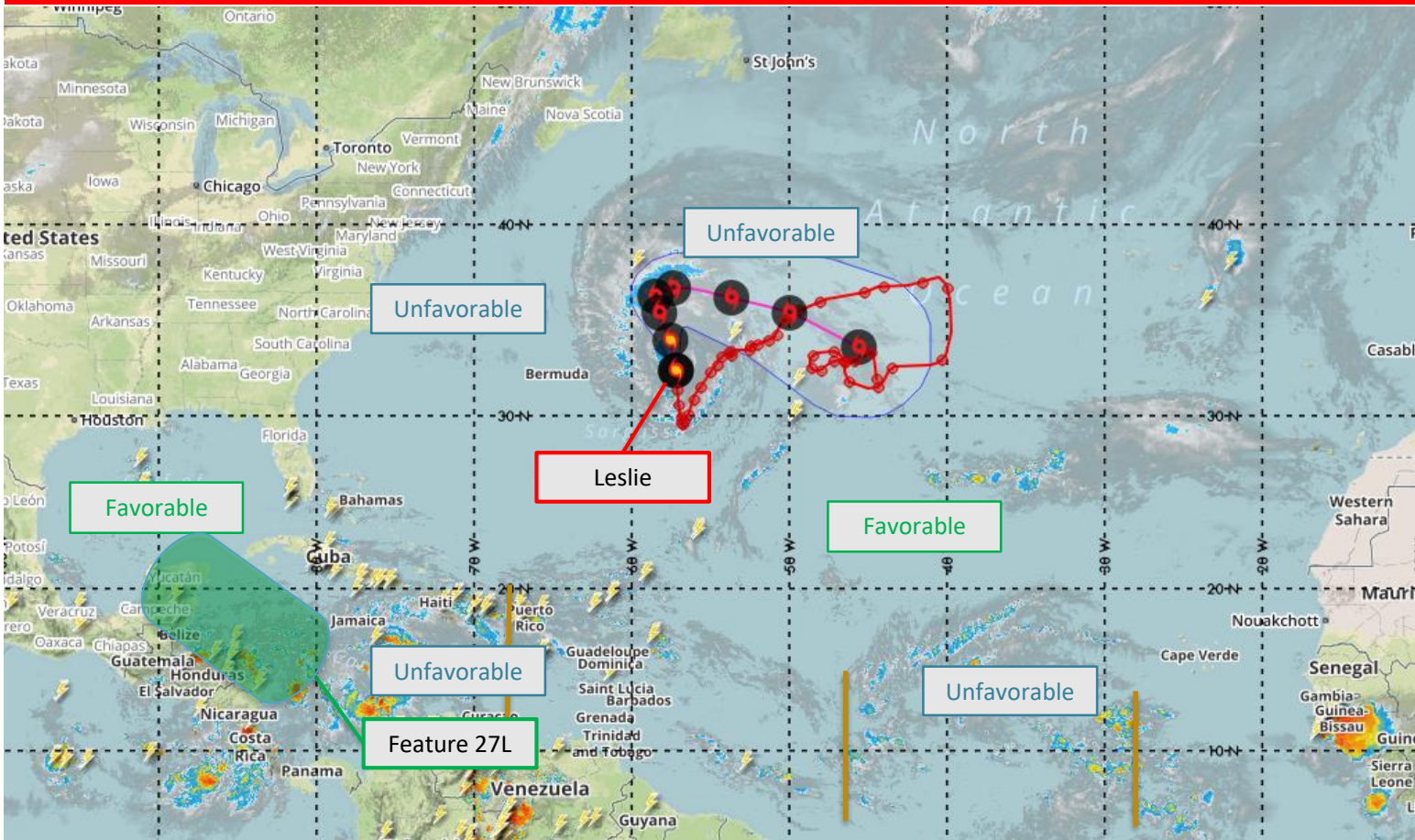


## HEADLINE

Effective: October 4, 2018 – 1400 CT / 1900 UTC

Leslie is producing near hurricane strength winds, but may weaken to tropical strength within the next 6-12 hours; Feature 27L maintains a low threat of development over the next 5 days.



### Active Tropical Threats

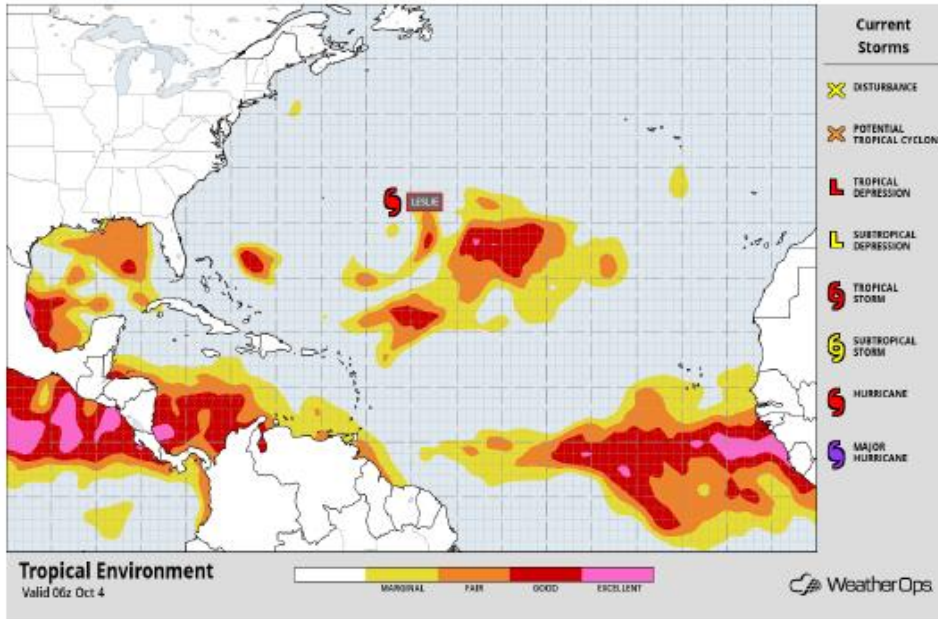
Feature #	Name	Current Location	5-Day Development Potential	Sustained Wind	Current Movement
24L	Hurricane Leslie	31.8N 57.4W	100%	65 knots	N at 8 knots
27L	Broad Low Pressure	15.0N 82.5W	30%	15 knots	Stationary

### General Discussion

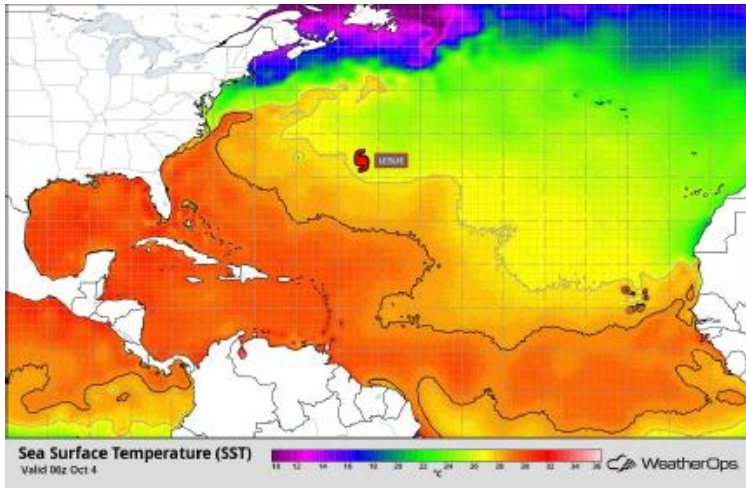
There are no changes with regard to Hurricane Leslie this afternoon. Leslie is meandering northward as a low-end category 1 strength hurricane, but latest wind estimates suggest Leslie may have already dipped to below hurricane strength. Regardless, slow but continued weakening is forecast the next several days.

Further south, a broad area of low pressure located over the western Caribbean Sea continues to produce numerous disorganized showers and a few thunderstorms. Strong wind shear over the region will continue to limit any development threat over the next couple of days but conditions could become more favorable by early next week as it tracks northwestward.

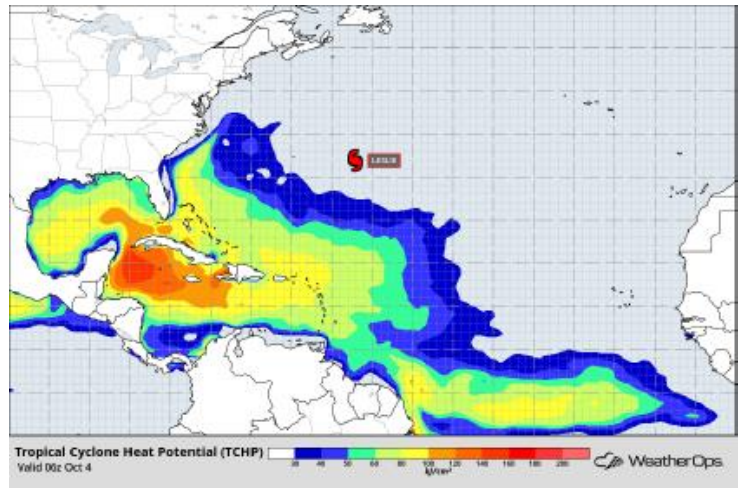
## Environmental Favorability for Tropical Cyclones



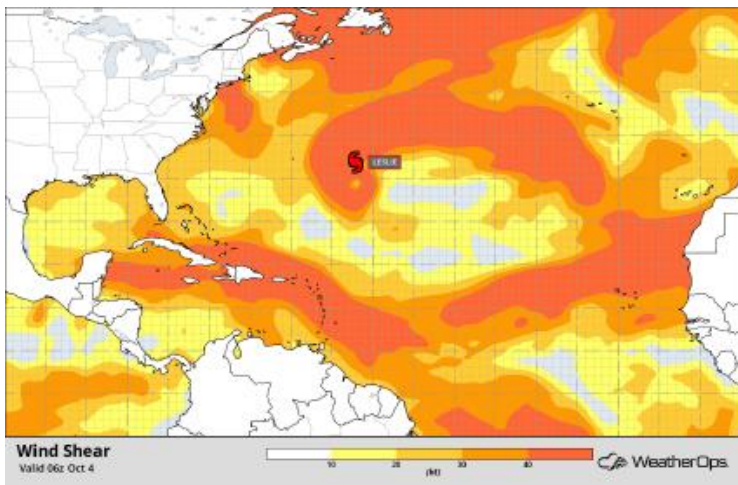
Current SST's



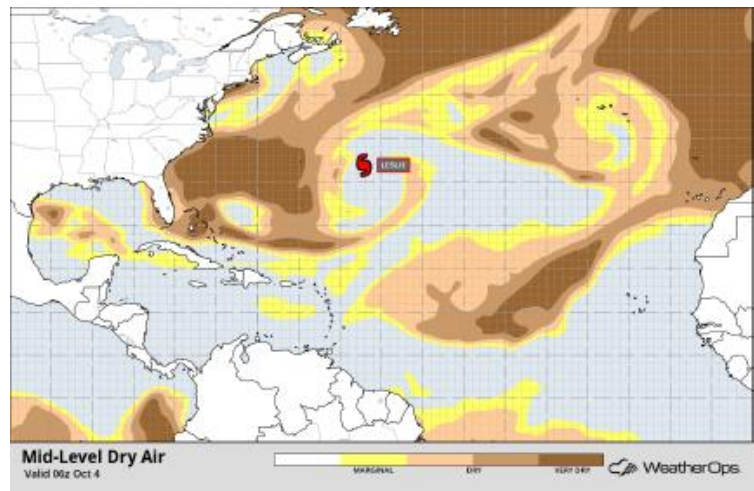
Tropical Cyclone Heat Potential



Current Wind Shear



Current Mid-Level Dry Air

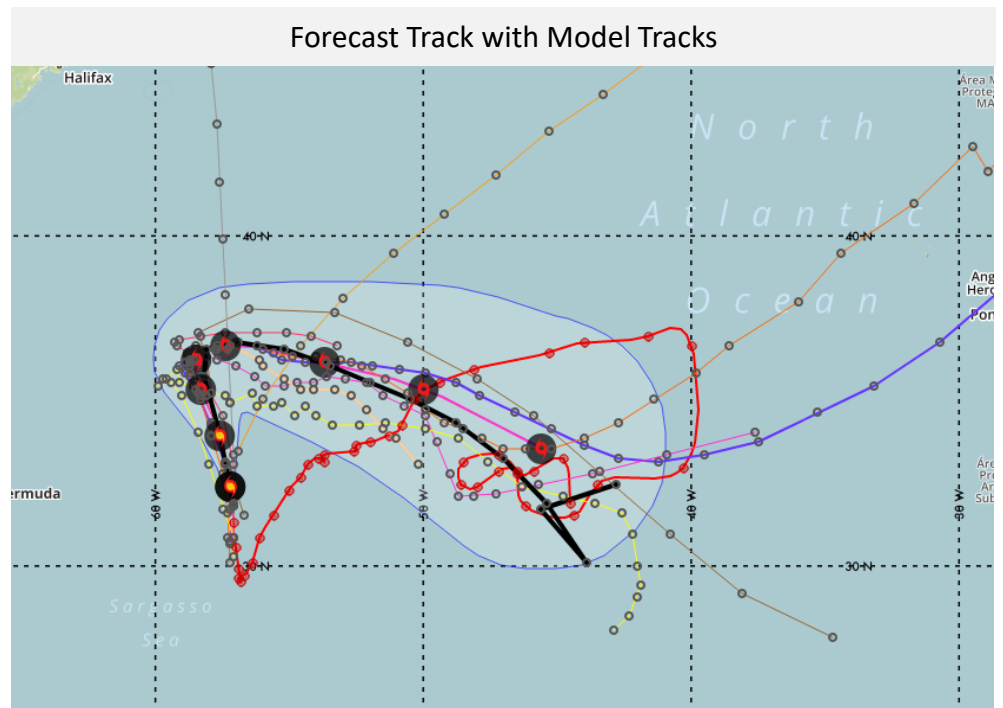
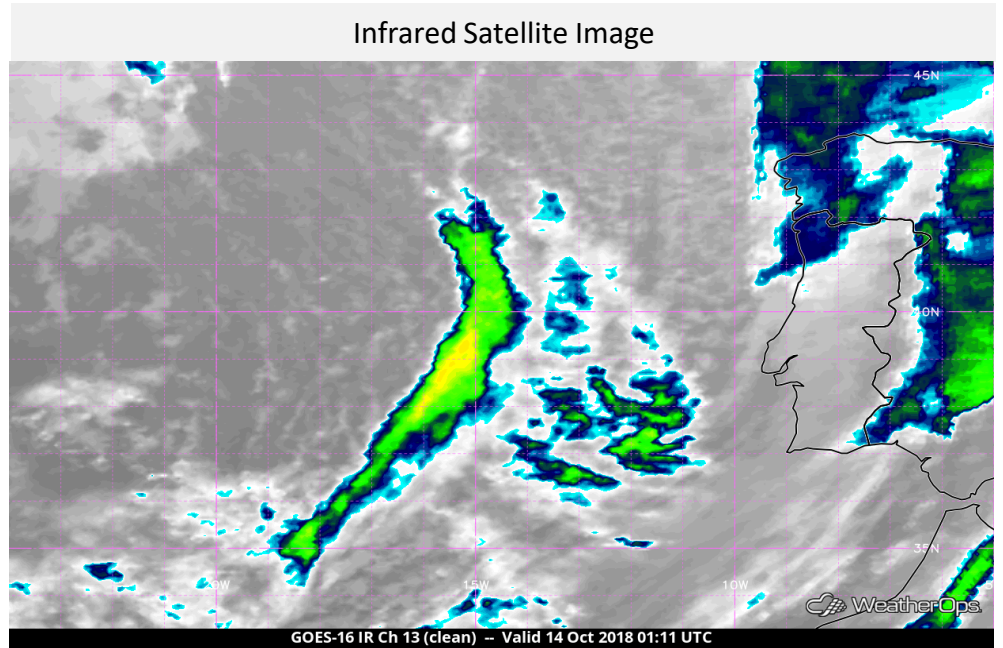


## Hurricane Leslie

Position and Intensity	Threat Briefing
<b>Feature Center:</b> 31.8N 57.4W	Visually, Leslie remains unchanged and continues to promote near hurricane strength winds of roughly 65 knots. Tropical storm force winds extend outward to 150+ nautical miles, and may extend to 200 nautical miles over the next 24 hours. Decreasing sea-surface temperatures should gradually weaken Leslie over the weekend as the storm is shunted eastward by a passing upper low and surface front. Leslie is forecast to remain over open waters through the next five days.
<b>Current Movement:</b> N at 8 knots	
<b>Current Sustained Winds:</b> 65 knots	
<b>Current Wind Gusts:</b> 80 knots	

5 Day Development Potential	
TD	100%
TS	100%
CAT 1	100%
CAT 2	0%
CAT 3	0%
CAT 4	0%
CAT 5	0%

Saffir-Simpson Scale Reference	
Intensity	Wind Speed (KTS)
TD	25 - 33
TS	34 - 63
CAT 1	64 - 82
CAT 2	83 - 95
CAT 3	96 - 112
CAT 4	113 - 136
CAT 5	137 +



## Feature 27L - Broad Low Pressure

Position and Intensity	Threat Briefing
<b>Feature Center:</b> 15.0N 82.5W	Latest analysis shows 27L remains a broad, but disorganized area of low pressure located along a surface trough just off the northeast coast of Nicaragua. 27L is producing widespread shower activity with sustained winds around 15 knots. 27L may begin lifting northwestward through the weekend, perhaps reaching the Gulf of Mexico by early next week. A low threat for tropical cyclone development will accompany 27L, but conditions across the gulf are forecast to remain only marginally favorable due to elevated shear.
<b>Current Movement:</b> Stationary	
<b>Current Sustained Winds:</b> 15 knots	
<b>Current Wind Gusts:</b> 25 knots	

5 Day Development Potential	
TD	30%
TS	30%
CAT 1	Near 0%
CAT 2	0%
CAT 3	0%
CAT 4	0%
CAT 5	0%

Saffir-Simpson Scale Reference	
Intensity	Wind Speed (KTS)
TD	25 - 33
TS	34 - 63
CAT 1	64 - 82
CAT 2	83 - 95
CAT 3	96 - 112
CAT 4	113 - 136
CAT 5	137 +

