

## U.S. Gas Weighted HDD Summary

## U.S. Population Weighted CDD Summary

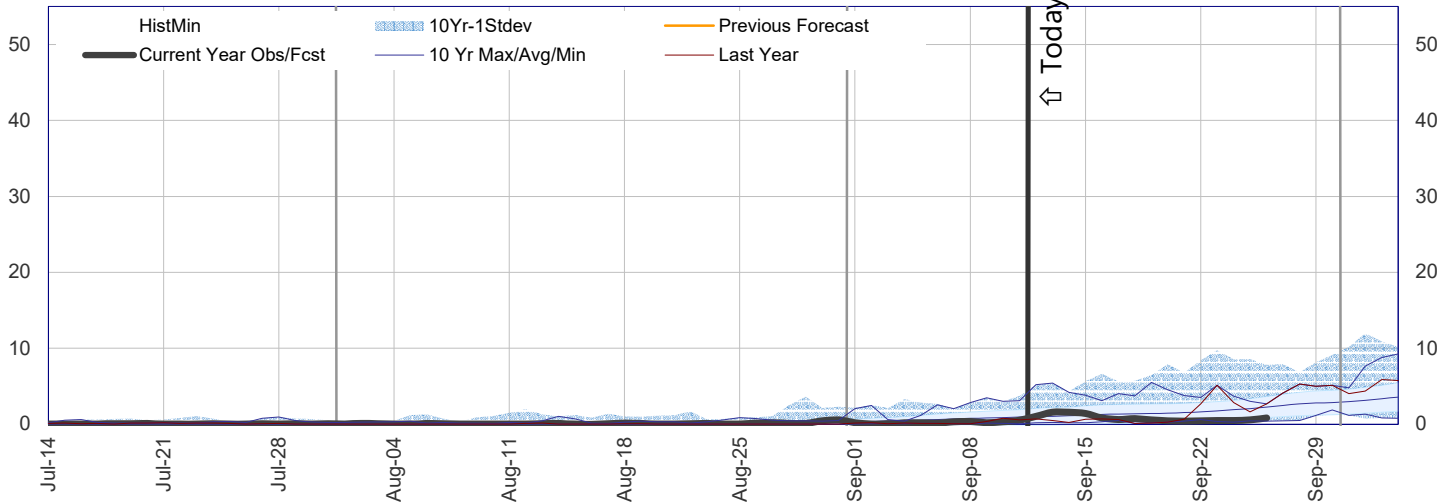
| Period or Week Ending | Obs/<br>Fcst<br>Total | Difference in Total/Forecast from |           |           |         |          |
|-----------------------|-----------------------|-----------------------------------|-----------|-----------|---------|----------|
|                       |                       | Last Fcst                         | Prev Week | Last Year | 5Yr Avg | 10Yr Avg |
| July 1-to-Date        | 8                     |                                   | ▲ 2       | ▲ 2       | ▼ -3    | ▼ -5     |
| 9/8/2023              | 1                     | - 0                               | ▼ -2      | ▼ 0       | ▼ -1    | ▼ -3     |
| 9/15/2023             | 8                     | ▼ -1                              | ▲ 7       | ▲ 5       | ▲ 3     | ▼ -1     |
| 9/22/2023             | 5                     | ▼ -1                              | ▼ -3      | ▲ 1       | ▼ -5    | ▼ -5     |
| 9/29/2023             | 5                     | ▼ -1                              | ▲ 0       | ▼ -33     | ▼ -14   | ▼ -11    |

| Pop Weighted CDD Summary Period | Obs/<br>Fcst<br>Total | Difference in Total/Forecast from |           |           |         |          |
|---------------------------------|-----------------------|-----------------------------------|-----------|-----------|---------|----------|
|                                 |                       | Last Fcst                         | Prev Week | Last Year | 5Yr Avg | 10Yr Avg |
| Jan 1-to-Date                   | 1,504                 |                                   | ▲ 86      | ▼ -107    | ▼ -35   | ▲ 17     |
| 9/8/2023                        | 91                    | - 0                               | ▲ 8       | ▲ 5       | ▲ 12    | ▲ 14     |
| 9/15/2023                       | 61                    | ▲ 1                               | ▼ -30     | ▲ 1       | ▼ -3    | ▼ -1     |
| 9/22/2023                       | 44                    | ▲ 2                               | ▼ -17     | ▼ -19     | ▼ -16   | ▼ -14    |
| 9/29/2023                       | 41                    | ▲ 2                               | ▼ -2      | ▲ 4       | ▼ -2    | ▼ -3     |

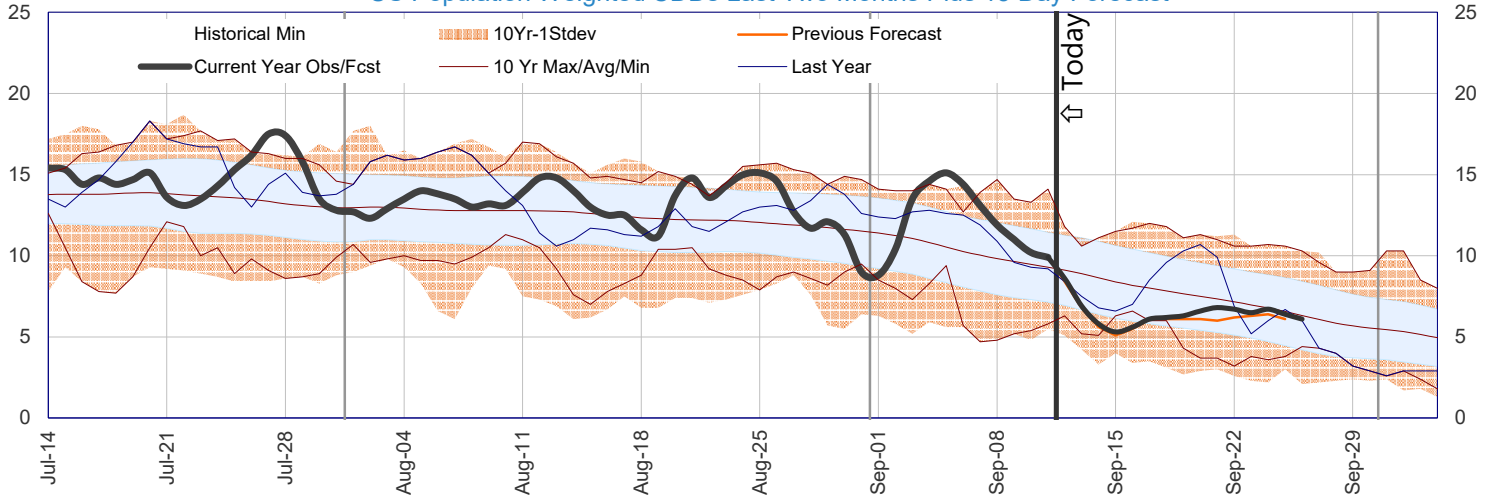
### US Gas Weighted HDD and US Population Weighted CDD Text Summary

- Season to Date HDDs are 2 DDs (33%) above last year and 3 DDs (29%) below the 5 year average.
- This week will see 7 more HDDs than last week, 5 more HDDs than last year, 3 more HDDs than the 5yr Avg.
- Next week will see 3 fewer HDDs than this week, 1 more HDDs than last year, 5 fewer HDDs than the 5yr Avg.
- Season to Date CDDs are 107 DDs (7%) below last year and 35 DDs (2%) below the 5 year average.
- This week will see 30 fewer CDDs than last week, 1 more CDDs than last year, 3 fewer CDDs than the 5yr Avg.
- Next week will see 17 fewer CDDs than last week, 19 fewer CDDs than last year, 16 fewer CDDs than the 5yr Avg.

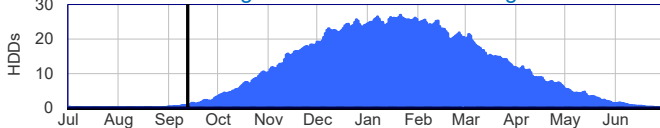
### US Gas Weighted HDDs Last Two Months Plus 15 Day Forecast



### US Population Weighted CDDs Last Two Months Plus 15 Day Forecast

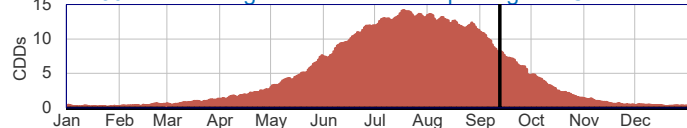


### 30 Year Average Distribution of Gas Weighted HDDs

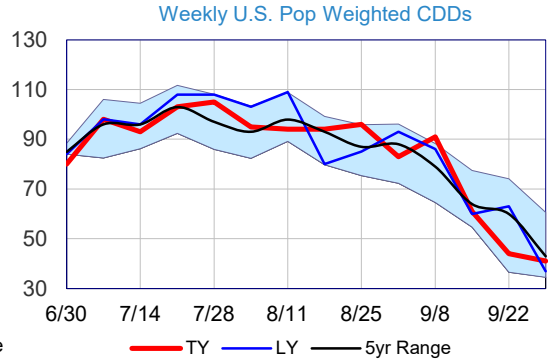
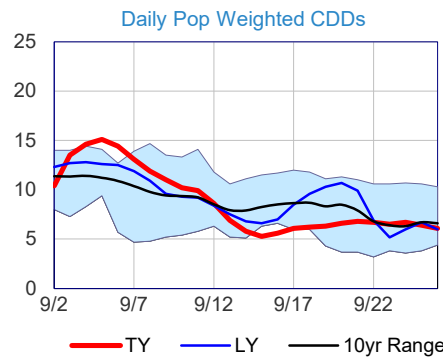
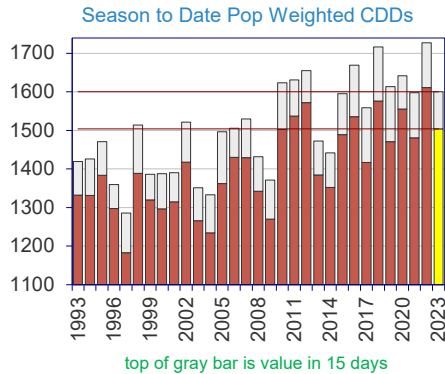
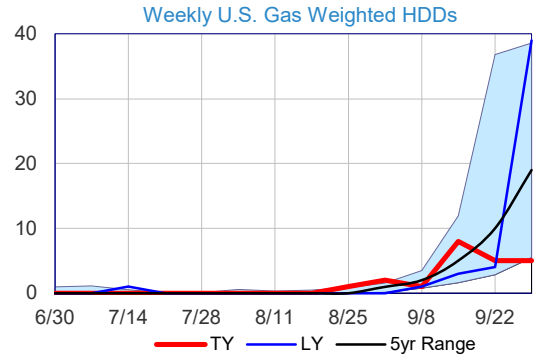
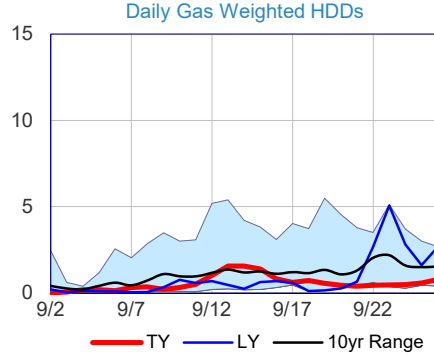
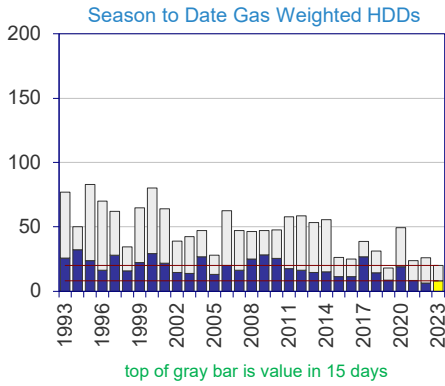


The heating season is currently <1% complete.

### 30 Year Average Distribution of Pop Weighted CDDs

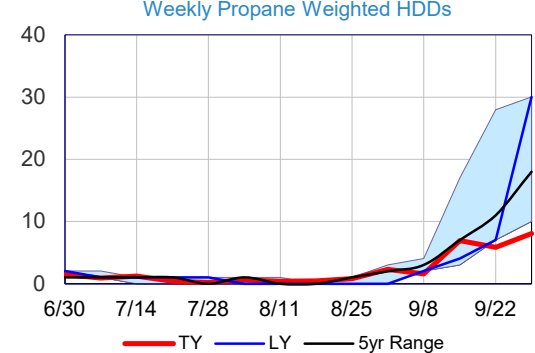
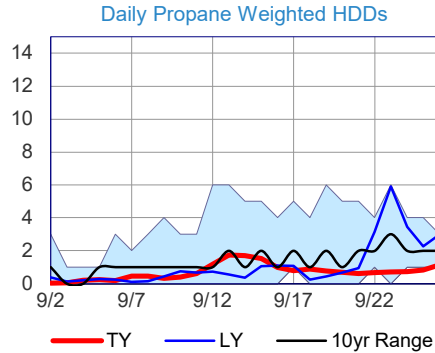
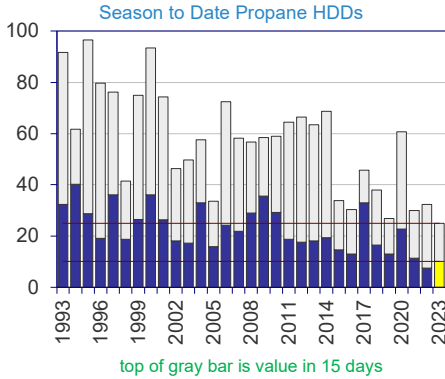
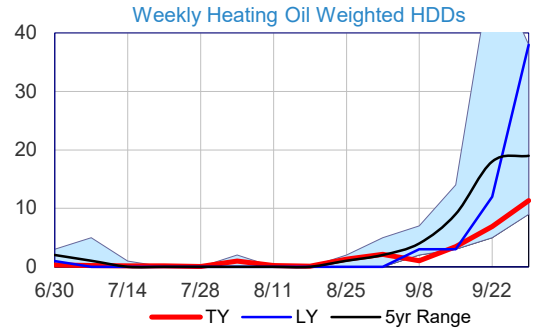
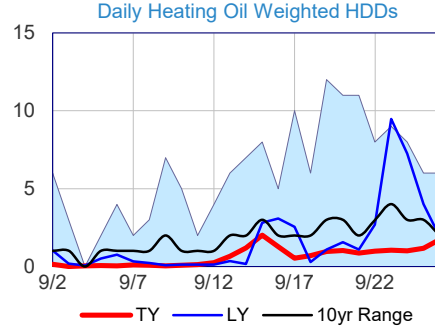
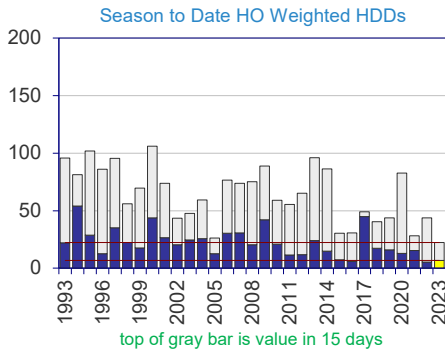


The cooling season is currently ~86% complete.



### Heating/Cooling Year Degree Day Rankings (July-June for HDDs and January-December for CDDs)

| Gas Weighted HDDs |      |      | Expected HDDs in 15 Days |      |      | Pop Weighted CDDs |      |      | Expected CDDs in 15 Days |      |      |
|-------------------|------|------|--------------------------|------|------|-------------------|------|------|--------------------------|------|------|
| Rank              | Year | HDDs | Rank                     | Year | HDDs | Rank              | Year | CDDs | Rank                     | Year | CDDs |
| 1                 | 1994 | 32   | 1                        | 1995 | 83   | 1                 | 2022 | 1611 | 1                        | 2022 | 1727 |
| 2                 | 2000 | 29   | 2                        | 2000 | 80   | 2                 | 2018 | 1576 | 2                        | 2018 | 1717 |
| 3                 | 2009 | 28   | 3                        | 1993 | 77   | 3                 | 2012 | 1572 | 3                        | 2016 | 1670 |
| 4                 | 1997 | 28   | 4                        | 1996 | 70   | 4                 | 2020 | 1555 | 4                        | 2012 | 1655 |
| 5                 | 2017 | 27   | 5                        | 1999 | 65   | 5                 | 2011 | 1537 | 5                        | 2020 | 1641 |
| 6                 | 2004 | 27   | 6                        | 2001 | 64   | 6                 | 2016 | 1535 | 6                        | 2011 | 1631 |
| 7                 | 1993 | 26   | 7                        | 2006 | 62   | 7                 | 2023 | 1504 | 7                        | 2010 | 1624 |
| 8                 | 2010 | 25   | 8                        | 1997 | 62   | 8                 | 2010 | 1503 | 8                        | 2019 | 1613 |
| 9                 | 2008 | 25   | 9                        | 2012 | 59   | 9                 | 2015 | 1490 | 9                        | 2023 | 1601 |
| 10                | 1995 | 24   | 10                       | 2011 | 58   | 10                | 2021 | 1480 | 10                       | 2021 | 1598 |
| 11                | 1999 | 22   | 11                       | 2014 | 56   | 11                | 2019 | 1471 | 11                       | 2015 | 1595 |
| 12                | 2001 | 22   | 12                       | 2013 | 53   | 12                | 2006 | 1430 | 12                       | 2017 | 1559 |
| 13                | 2006 | 20   | 13                       | 1994 | 50   | 13                | 2007 | 1429 | 13                       | 2007 | 1530 |
| 14                | 2020 | 19   | 14                       | 2020 | 49   | 14                | 2002 | 1417 | 14                       | 2002 | 1522 |
| 15                | 2011 | 18   | 15                       | 2010 | 48   | 15                | 2017 | 1417 | 15                       | 1998 | 1514 |
| Median            | 2012 | 16   | Median                   | 2007 | 47   | Median            | 1998 | 1388 | Median                   | 2006 | 1506 |
| 17                | 1996 | 16   | 17                       | 2009 | 47   | 17                | 2013 | 1385 | 17                       | 2005 | 1497 |
| 18                | 2007 | 16   | 18                       | 2004 | 47   | 18                | 1995 | 1384 | 18                       | 2013 | 1472 |
| 19                | 1998 | 16   | 19                       | 2008 | 46   | 19                | 2005 | 1362 | 19                       | 1995 | 1471 |
| 20                | 2014 | 15   | 20                       | 2003 | 42   | 20                | 2014 | 1352 | 20                       | 2014 | 1442 |
| 21                | 2013 | 15   | 21                       | 2002 | 39   | 21                | 2008 | 1342 | 21                       | 2008 | 1432 |
| 22                | 2002 | 15   | 22                       | 2017 | 39   | 22                | 1993 | 1332 | 22                       | 1994 | 1426 |
| 23                | 2018 | 14   | 23                       | 1998 | 34   | 23                | 1994 | 1331 | 23                       | 1993 | 1420 |
| 24                | 2003 | 14   | 24                       | 2018 | 31   | 24                | 1999 | 1320 | 24                       | 2001 | 1390 |
| 25                | 2005 | 13   | 25                       | 2005 | 28   | 25                | 2001 | 1315 | 25                       | 2000 | 1388 |
| 26                | 2015 | 11   | 26                       | 2015 | 26   | 26                | 1996 | 1297 | 26                       | 1999 | 1386 |
| 27                | 2016 | 11   | 27                       | 2022 | 26   | 27                | 2000 | 1296 | 27                       | 2009 | 1371 |
| 28                | 2019 | 9    | 28                       | 2016 | 25   | 28                | 2009 | 1270 | 28                       | 1996 | 1359 |
| 29                | 2021 | 8    | 29                       | 2021 | 24   | 29                | 2003 | 1266 | 29                       | 2003 | 1352 |
| 30                | 2023 | 8    | 30                       | 2023 | 20   | 30                | 2004 | 1234 | 30                       | 2004 | 1333 |
| 31                | 2022 | 6    | 31                       | 2019 | 18   | 31                | 1997 | 1183 | 31                       | 1997 | 1286 |



### July-June Heating Season-to-Date Heating Oil and Propane Weighted HDD Rankings

| H.O. Weighted HDDs |      |      | Expected HDDs in 15 Days |      |      | Propane Wgtd HDDs |      |      | Expected HDDs in 15 Days |      |      |
|--------------------|------|------|--------------------------|------|------|-------------------|------|------|--------------------------|------|------|
| Rank               | Year | HDDs | Rank                     | Year | HDDs | Rank              | Year | HDDs | Rank                     | Year | HDDs |
| 1                  | 1994 | 54   | 1                        | 2000 | 106  | 1                 | 1994 | 40   | 1                        | 1995 | 97   |
| 2                  | 2017 | 45   | 2                        | 1995 | 102  | 2                 | 1997 | 36   | 2                        | 2000 | 93   |
| 3                  | 2000 | 44   | 3                        | 2013 | 96   | 3                 | 2000 | 36   | 3                        | 1993 | 92   |
| 4                  | 2009 | 42   | 4                        | 1993 | 96   | 4                 | 2009 | 36   | 4                        | 1996 | 80   |
| 5                  | 1997 | 35   | 5                        | 1997 | 95   | 5                 | 2004 | 33   | 5                        | 1997 | 76   |
| 6                  | 2007 | 31   | 6                        | 2009 | 89   | 6                 | 2017 | 33   | 6                        | 1999 | 75   |
| 7                  | 2006 | 30   | 7                        | 2014 | 86   | 7                 | 1993 | 32   | 7                        | 2001 | 74   |
| 8                  | 1995 | 29   | 8                        | 1996 | 86   | 8                 | 2010 | 29   | 8                        | 2006 | 72   |
| 9                  | 2001 | 27   | 9                        | 2020 | 83   | 9                 | 2008 | 29   | 9                        | 2014 | 69   |
| 10                 | 2004 | 26   | 10                       | 1994 | 81   | 10                | 1995 | 29   | 10                       | 2012 | 66   |
| 11                 | 2003 | 25   | 11                       | 2006 | 77   | 11                | 1999 | 26   | 11                       | 2011 | 65   |
| 12                 | 2013 | 24   | 12                       | 2008 | 75   | 12                | 2001 | 26   | 12                       | 2013 | 64   |
| 13                 | 1998 | 22   | 13                       | 2007 | 74   | 13                | 2006 | 24   | 13                       | 1994 | 62   |
| 14                 | 1993 | 22   | 14                       | 2001 | 74   | 14                | 2020 | 23   | 14                       | 2020 | 61   |
| 15                 | 2010 | 21   | 15                       | 1999 | 70   | 15                | 2007 | 22   | 15                       | 2010 | 59   |
| Median             | 2008 | 21   | Median                   | 2012 | 65   | Median            | 2014 | 19   | Median                   | 2009 | 59   |
| 17                 | 2002 | 20   | 17                       | 2004 | 59   | 17                | 1996 | 19   | 17                       | 2007 | 58   |
| 18                 | 1999 | 18   | 18                       | 2010 | 59   | 18                | 2011 | 19   | 18                       | 2004 | 58   |
| 19                 | 2018 | 17   | 19                       | 1998 | 56   | 19                | 1998 | 19   | 19                       | 2008 | 57   |
| 20                 | 2019 | 16   | 20                       | 2011 | 56   | 20                | 2002 | 18   | 20                       | 2003 | 50   |
| 21                 | 2021 | 15   | 21                       | 2017 | 49   | 21                | 2013 | 18   | 21                       | 2002 | 46   |
| 22                 | 2014 | 15   | 22                       | 2003 | 48   | 22                | 2012 | 18   | 22                       | 2017 | 46   |
| 23                 | 2020 | 13   | 23                       | 2022 | 44   | 23                | 2003 | 17   | 23                       | 1998 | 41   |
| 24                 | 1996 | 13   | 24                       | 2019 | 44   | 24                | 2018 | 16   | 24                       | 2018 | 38   |
| 25                 | 2005 | 13   | 25                       | 2002 | 44   | 25                | 2005 | 16   | 25                       | 2015 | 34   |
| 26                 | 2012 | 12   | 26                       | 2018 | 40   | 26                | 2015 | 15   | 26                       | 2005 | 34   |
| 27                 | 2011 | 11   | 27                       | 2016 | 31   | 27                | 2016 | 13   | 27                       | 2022 | 32   |
| 28                 | 2015 | 7    | 28                       | 2015 | 31   | 28                | 2019 | 13   | 28                       | 2016 | 30   |
| 29                 | 2023 | 7    | 29                       | 2021 | 28   | 29                | 2021 | 11   | 29                       | 2021 | 30   |
| 30                 | 2016 | 6    | 30                       | 2005 | 26   | 30                | 2023 | 10   | 30                       | 2019 | 27   |
| 31                 | 2022 | 5    | 31                       | 2023 | 22   | 31                | 2022 | 7    | 31                       | 2023 | 25   |

### Weekly U.S. Population Weighted Degree Day Totals

| Week Ending              | Pop Weighted HDDs (New) <sup>1</sup> |         |         | Pop Weighted CDDs (New) <sup>1</sup> |         |         | Combo DDs (HDDs+0.75*CDDs) |         |         | Old Combo Pop Weighted DDs <sup>2</sup> |         |         |
|--------------------------|--------------------------------------|---------|---------|--------------------------------------|---------|---------|----------------------------|---------|---------|---|---------|---------|
|                          | This Yr                              | Last Yr | 5Yr Avg | This Yr                              | Last Yr | 5Yr Avg | This Yr                    | Last Yr | 5Yr Avg | This Yr                                 | Last Yr | 5Yr Avg |
| 6/30/2023                | 1 (0)                                | 1       | 1       | 80 (0)                               | 84      | 85      | 59 (0)                     | 61      | 62      | 63                                      | 65      | 65      |
| 7/7/2023                 | 1 (0)                                | 1       | 1       | 98 (0)                               | 98      | 96      | 71 (0)                     | 72      | 70      | 74                                      | 76      | 73      |
| 7/14/2023                | 1 (0)                                | 0       | 0       | 93 (0)                               | 96      | 96      | 68 (0)                     | 69      | 69      | 72                                      | 73      | 72      |
| 7/21/2023                | 0 (0)                                | 1       | 0       | 103 (0)                              | 108     | 103     | 75 (0)                     | 79      | 74      | 79                                      | 83      | 78      |
| 7/28/2023                | 0 (0)                                | 1       | 0       | 105 (0)                              | 108     | 97      | 76 (0)                     | 79      | 70      | 81                                      | 83      | 74      |
| 8/4/2023                 | 1 (0)                                | 0       | 1       | 95 (0)                               | 103     | 93      | 69 (0)                     | 74      | 68      | 74                                      | 79      | 71      |
| 8/11/2023                | 0 (0)                                | 0       | 0       | 94 (0)                               | 109     | 98      | 68 (0)                     | 78      | 71      | 73                                      | 83      | 74      |
| 8/18/2023                | 0 (0)                                | 0       | 0       | 94 (0)                               | 80      | 93      | 68 (0)                     | 58      | 67      | 73                                      | 62      | 70      |
| 8/25/2023                | 0 (0)                                | 0       | 1       | 96 (0)                               | 85      | 87      | 69 (0)                     | 61      | 64      | 75                                      | 65      | 67      |
| 9/1/2023                 | 1 (0)                                | 0       | 1       | 83 (0)                               | 93      | 88      | 61 (0)                     | 67      | 64      | 65                                      | 71      | 67      |
| 9/8/2023                 | 1 (0)                                | 1       | 2       | 91 (0)                               | 86      | 79      | 67 (0)                     | 63      | 59      | 72                                      | 67      | 61      |
| 9/15/2023                | 5 (0)                                | 3       | 5       | 61 (1)                               | 60      | 64      | 49 (0)                     | 46      | 51      | 51                                      | 49      | 53      |
| 9/22/2023                | 4 (0)                                | 4       | 8       | 44 (2)                               | 63      | 60      | 35 (1)                     | 49      | 51      | 37                                      | 52      | 52      |
| 9/29/2023                | 6 (0)                                | 22      | 13      | 41 (2)                               | 37      | 43      | 35 (1)                     | 49      | 44      | 25                                      | 49      | 45      |
| R squared to EIA Number* | 0.4189                               |         |         | 0.5081                               |         |         | 0.5000                     |         |         | 0.5612                                  |         |         |

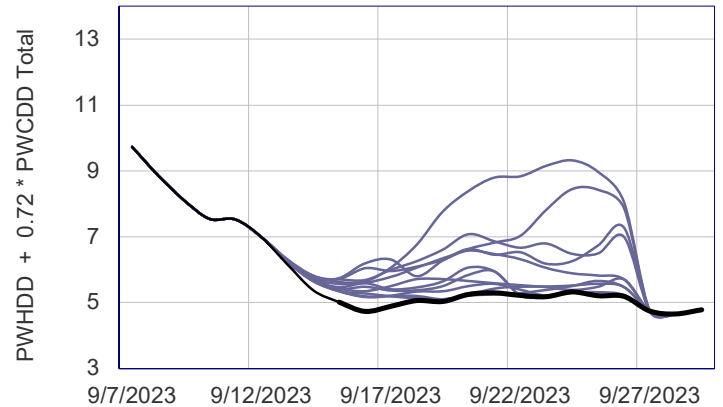
\*over last 10 weeks

Values in parenthesis are the change from the previous report.

Red numbers correspond to file locations on last page.

### Weekly U.S. Population Weighted Degree Day Total Estimates from Model Projections

| Forecast Source        | 9/15/2023 | 9/22/2023 | 9/29/2023 |
|------------------------|-----------|-----------|-----------|
| 0Z GFS (9/12/23)       | 50        | 51        | 52        |
| 6Z GFS (9/11/23)       | 49        | 44        | 48        |
| 12Z GFS (9/11/23)      | 50        | 44        | 42        |
| 18Z GFS (9/11/23)      | 50        | 45        | 42        |
| 0Z GFS ENS (9/12/23)   | 49        | 43        | 38        |
| 18Z GFS ENS (9/11/23)  | 49        | 39        | 37        |
| 0Z Euro (9/12/23)      | 49        | 39        | 35        |
| 12Z Euro (9/11/23)     | 49        | 39        | 35        |
| 0Z Euro ENS (9/12/23)  | 49        | 37        | 37        |
| 12Z Euro ENS (9/11/23) | 49        | 36        | 36        |
| Max Total              | 50        | 51        | 52        |
| FW Forecast            | 49        | 35        | 35        |
| Model Average          | 49        | 42        | 40        |
| Min Total              | 49        | 35        | 35        |



If 9/29/2023 is beyond end of model run, missing days are filled in with FW forecast values.

### Gas Weighted HDDs, Gas & Electric Heating Weighted HDDs, and Gas & Electric HDDs + PW CDDs

| Week Ending              | Gas R&C Weighted HDDs <sup>3</sup> |         |         | Gas + Electric Heating HDD Blend <sup>3</sup> |         |         | Gas + Elec HDDs + PW CDDs <sup>4</sup> |         |         | Old Gas Weighted DDs* <sup>5</sup> |         |         |
|--------------------------|------------------------------------|---------|---------|---|---------|---------|--|---------|---------|------------------------------------|---------|---------|
|                          | This Yr                            | Last Yr | 5Yr Avg | This Yr                                       | Last Yr | 5Yr Avg | This Yr                                | Last Yr | 5Yr Avg | This Yr                            | Last Yr | 5Yr Avg |
| 6/30/2023                | 0 (0)                              | 0       | 0       | 1 (0)   | 1       | 1       | 59 (0)                                 | 61      | 62      | 75                                 | 74      | 71      |
| 7/7/2023                 | 0 (0)                              | 0       | 0       | 1 (0)   | 1       | 1       | 72 (0)                                 | 72      | 70      | 81                                 | 83      | 78      |
| 7/14/2023                | 0 (0)                              | 1       | 0       | 1 (0)   | 1       | 0       | 68 (0)                                 | 70      | 69      | 81                                 | 84      | 78      |
| 7/21/2023                | 0 (0)                              | 0       | 0       | 0 (0)   | 1       | 0       | 74 (0)                                 | 79      | 74      | 88                                 | 91      | 84      |
| 7/28/2023                | 0 (0)                              | 0       | 0       | 0 (0)   | 1       | 0       | 76 (0)                                 | 79      | 70      | 87                                 | 90      | 80      |
| 8/4/2023                 | 0 (0)                              | 0       | 0       | 0 (0)   | 0       | 1       | 68 (0)                                 | 74      | 68      | 86                                 | 86      | 77      |
| 8/11/2023                | 0 (0)                              | 0       | 0       | 0 (0)   | 0       | 0       | 68 (0)                                 | 78      | 71      | 85                                 | 88      | 80      |
| 8/18/2023                | 0 (0)                              | 0       | 0       | 0 (0)   | 0       | 0       | 68 (0)                                 | 58      | 67      | 83                                 | 71      | 77      |
| 8/25/2023                | 1 (0)                              | 0       | 0       | 0 (0)   | 0       | 1       | 69 (0)                                 | 61      | 64      | 87                                 | 68      | 73      |
| 9/1/2023                 | 2 (0)                              | 0       | 1       | 2 (0)   | 0       | 1       | 62 (0)                                 | 67      | 64      | 76                                 | 75      | 74      |
| 9/8/2023                 | 1 (0)                              | 1       | 2       | 1 (0)   | 1       | 2       | 67 (0)                                 | 63      | 59      | 81                                 | 70      | 68      |
| 9/15/2023                | 8 (-1)                             | 3       | 5       | 6 (0)   | 3       | 5       | 50 (1)                                 | 46      | 51      | 59                                 | 53      | 58      |
| 9/22/2023                | 5 (-1)                             | 4       | 10      | 4 (0)   | 4       | 8       | 36 (0)                                 | 49      | 51      | 46                                 | 60      | 59      |
| 9/29/2023                | 5 (-1)                             | 39      | 19      | 6 (0)   | 24      | 14      | 36 (1)                                 | 51      | 45      | 46                                 | 57      | 50      |
| R squared to EIA Number* | 0.0019                             |         |         | 0.2669  |         |         | 0.4801                                 |         |         | 0.5461                             |         |         |

\*over last 10 weeks

Values in parenthesis are the change from the previous report.

\*Old DDs also tried to account for electric heat impacting gas power generation.

### Heating Oil and Propane Weighted Data

| Week Ending | NEW US H. Oil Weighted HDDs 6 |         |         | US Propane Weighted HDDs 6 |         |         | Old Oil Weighted HDDs 12 |         |         |
|-------------|-------------------------------|---------|---------|----------------------------|---------|---------|--------------------------|---------|---------|
|             | This Yr                       | Last Yr | 5Yr Avg | This Yr                    | Last Yr | 5Yr Avg | This Yr                  | Last Yr | 5Yr Avg |
| 6/30/2023   | 0 (0)                         | 1       | 2       | 1 (0)                      | 2       | 1       | 0                        | 0       | 1       |
| 7/7/2023    | 0 (0)                         | 0       | 1       | 1 (0)                      | 1       | 1       | 0                        | 0       | 1       |
| 7/14/2023   | 0 (0)                         | 0       | 0       | 1 (0)                      | 1       | 1       | 0                        | 0       | 0       |
| 7/21/2023   | 0 (0)                         | 0       | 0       | 0 (0)                      | 1       | 1       | 0                        | 0       | 0       |
| 7/28/2023   | 0 (0)                         | 0       | 0       | 0 (0)                      | 1       | 0       | 0                        | 0       | 0       |
| 8/4/2023    | 1 (0)                         | 0       | 0       | 1 (0)                      | 0       | 1       | 0                        | 0       | 0       |
| 8/11/2023   | 0 (0)                         | 0       | 0       | 0 (0)                      | 0       | 0       | 0                        | 0       | 0       |
| 8/18/2023   | 0 (0)                         | 0       | 0       | 0 (0)                      | 0       | 0       | 0                        | 0       | 0       |
| 8/25/2023   | 1 (0)                         | 0       | 1       | 1 (0)                      | 0       | 1       | 1                        | 0       | 0       |
| 9/1/2023    | 2 (0)                         | 0       | 2       | 2 (0)                      | 0       | 2       | 1                        | 0       | 1       |
| 9/8/2023    | 1 (0)                         | 3       | 4       | 2 (0)                      | 2       | 3       | 1                        | 2       | 2       |
| 9/15/2023   | 3 (0)                         | 3       | 9       | 7 (0)                      | 4       | 7       | 3                        | 2       | 6       |
| 9/22/2023   | 7 (-1)                        | 12      | 18      | 6 (0)                      | 7       | 11      | 4                        | 8       | 14      |
| 9/29/2023   | 11 (-2)                       | 38      | 19      | 8 (-1)                     | 30      | 18      | 9                        | 32      | 15      |

Values in parenthesis are the change from the previous report.

Red numbers correspond to file locations on last page.

### PADD 1 Region and Sub-Region Population Weighted HDDs 7

| Week Ending | Total PADD1 (East Coast) HDDs |         |         | PADD 1A (New England) HDDs |         |         | PADD 1B (Central Atl.) HDDs |         |         | PADD 1C (Lower Atl.) HDDs |         |         |
|-------------|-------------------------------|---------|---------|----------------------------|---------|---------|-----------------------------|---------|---------|---------------------------|---------|---------|
|             | This Yr                       | Last Yr | 5Yr Avg | This Yr                    | Last Yr | 5Yr Avg | This Yr                     | Last Yr | 5Yr Avg | This Yr                   | Last Yr | 5Yr Avg |
| 6/30/2023   | 0 (0)                         | 0       | 1       | 0 (0)                      | 0       | 3       | 0 (0)                       | 0       | 0       | 0 (0)                     | 0       | 0       |
| 7/7/2023    | 0 (0)                         | 0       | 0       | 0 (0)                      | 0       | 2       | 0 (0)                       | 0       | 0       | 0 (0)                     | 0       | 0       |
| 7/14/2023   | 0 (0)                         | 0       | 0       | 0 (0)                      | 1       | 0       | 0 (0)                       | 0       | 0       | 0 (0)                     | 0       | 0       |
| 7/21/2023   | 0 (0)                         | 0       | 0       | 0 (0)                      | 0       | 0       | 0 (0)                       | 0       | 0       | 0 (0)                     | 0       | 0       |
| 7/28/2023   | 0 (0)                         | 0       | 0       | 0 (0)                      | 0       | 0       | 0 (0)                       | 0       | 0       | 0 (0)                     | 0       | 0       |
| 8/4/2023    | 0 (0)                         | 0       | 0       | 2 (0)                      | 0       | 0       | 0 (0)                       | 0       | 0       | 0 (0)                     | 0       | 0       |
| 8/11/2023   | 0 (0)                         | 0       | 0       | 1 (0)                      | 0       | 0       | 0 (0)                       | 0       | 0       | 0 (0)                     | 0       | 0       |
| 8/18/2023   | 0 (0)                         | 0       | 0       | 0 (0)                      | 0       | 0       | 0 (0)                       | 0       | 0       | 0 (0)                     | 0       | 0       |
| 8/25/2023   | 1 (0)                         | 0       | 0       | 2 (0)                      | 0       | 1       | 1 (0)                       | 0       | 0       | 0 (0)                     | 0       | 0       |
| 9/1/2023    | 1 (0)                         | 0       | 1       | 3 (0)                      | 1       | 4       | 1 (0)                       | 0       | 0       | 0 (0)                     | 0       | 0       |
| 9/8/2023    | 0 (0)                         | 1       | 1       | 1 (0)                      | 7       | 6       | 0 (0)                       | 0       | 1       | 0 (0)                     | 0       | 0       |
| 9/15/2023   | 2 (0)                         | 1       | 4       | 2 (0)                      | 3       | 13      | 3 (0)                       | 1       | 5       | 1 (0)                     | 0       | 0       |
| 9/22/2023   | 3 (0)                         | 5       | 10      | 9 (0)                      | 25      | 28      | 4 (-1)                      | 4       | 12      | 1 (0)                     | 0       | 3       |
| 9/29/2023   | 5 (-1)                        | 23      | 10      | 19 (-2)                    | 44      | 24      | 5 (-2)                      | 33      | 13      | 0 (0)                     | 9       | 4       |

Values in parenthesis are the change from the previous report.

-- See last page for a map of PADD regions. --

### PADD Regions 2-5 Population Weighted HDDs 7

| Week Ending | PADD 2 (Midwest) HDDs |         |         | PADD 3 (Gulf Coast) HDDs |         |         | PADD 4 (Rocky Mtns) HDDs |         |         | PADD 5* (West Coast) HDDs |         |         |
|-------------|-----------------------|---------|---------|--------------------------|---------|---------|--------------------------|---------|---------|---------------------------|---------|---------|
|             | This Yr               | Last Yr | 5Yr Avg | This Yr                  | Last Yr | 5Yr Avg | This Yr                  | Last Yr | 5Yr Avg | This Yr                   | Last Yr | 5Yr Avg |
| 6/30/2023   | 0 (0)                 | 1       | 0       | 0 (0)                    | 0       | 0       | 5 (0)                    | 7       | 7       | 5 (0)                     | 4       | 3       |
| 7/7/2023    | 0 (0)                 | 0       | 0       | 0 (0)                    | 0       | 0       | 6 (0)                    | 1       | 3       | 2 (0)                     | 4       | 3       |
| 7/14/2023   | 1 (0)                 | 1       | 0       | 0 (0)                    | 0       | 0       | 1 (0)                    | 0       | 1       | 4 (0)                     | 1       | 2       |
| 7/21/2023   | 0 (0)                 | 0       | 0       | 0 (0)                    | 0       | 0       | 1 (0)                    | 0       | 1       | 1 (0)                     | 4       | 2       |
| 7/28/2023   | 0 (0)                 | 0       | 0       | 0 (0)                    | 0       | 0       | 0 (0)                    | 0       | 0       | 1 (0)                     | 3       | 2       |
| 8/4/2023    | 0 (0)                 | 0       | 0       | 0 (0)                    | 0       | 0       | 0 (0)                    | 0       | 0       | 1 (0)                     | 0       | 2       |
| 8/11/2023   | 0 (0)                 | 0       | 0       | 0 (0)                    | 0       | 0       | 3 (0)                    | 1       | 1       | 0 (0)                     | 0       | 1       |
| 8/18/2023   | 1 (0)                 | 1       | 0       | 0 (0)                    | 0       | 0       | 2 (0)                    | 0       | 1       | 0 (0)                     | 0       | 1       |
| 8/25/2023   | 0 (0)                 | 0       | 0       | 0 (0)                    | 0       | 0       | 1 (0)                    | 1       | 4       | 0 (0)                     | 0       | 1       |
| 9/1/2023    | 3 (0)                 | 0       | 1       | 0 (0)                    | 0       | 0       | 2 (0)                    | 1       | 5       | 1 (0)                     | 0       | 2       |
| 9/8/2023    | 1 (0)                 | 1       | 3       | 0 (0)                    | 0       | 0       | 5 (0)                    | 0       | 6       | 2 (0)                     | 1       | 2       |
| 9/15/2023   | 13 (-1)               | 5       | 7       | 0 (0)                    | 0       | 1       | 15 (0)                   | 21      | 21      | 1 (0)                     | 1       | 4       |
| 9/22/2023   | 6 (-1)                | 4       | 9       | 0 (0)                    | 0       | 0       | 14 (1)                   | 16      | 20      | 3 (1)                     | 4       | 6       |
| 9/29/2023   | 6 (-1)                | 46      | 25      | 0 (0)                    | 1       | 1       | 30 (2)                   | 16      | 30      | 6 (1)                     | 3       | 8       |

Values in parenthesis are the change from the previous report.

\*Excludes AK and HI

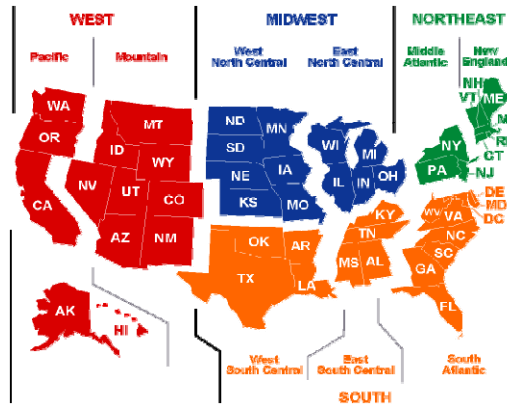


### Population Weighted Degree Day Totals by Census Region and Sub-Region

Degree Day Totals = HDDs + 0.72 \* CDDs

| Week Ending | Northeast Region Degree Days 8 |         |         | Midwest Region Degree Days 8 |         |         |
|-------------|--------------------------------|---------|---------|------------------------------|---------|---------|
|             | This Yr                        | Last Yr | 5Yr Avg | This Yr                      | Last Yr | 5Yr Avg |
| 7/28/2023   | 59 (0)                         | 76      | 62      | 62 (0)                       | 59      | 55      |
| 8/4/2023    | 38 (0)                         | 63      | 57      | 53 (0)                       | 56      | 45      |
| 8/11/2023   | 46 (0)                         | 84      | 63      | 44 (0)                       | 60      | 56      |
| 8/18/2023   | 47 (0)                         | 37      | 52      | 34 (0)                       | 34      | 48      |
| 8/25/2023   | 33 (0)                         | 58      | 52      | 66 (0)                       | 42      | 46      |
| 9/1/2023    | 38 (0)                         | 61      | 51      | 30 (0)                       | 48      | 49      |
| 9/8/2023    | 63 (0)                         | 34      | 37      | 54 (0)                       | 39      | 37      |
| 9/15/2023   | 37 (0)                         | 31      | 33      | 23 (-1)                      | 26      | 35      |
| 9/22/2023   | 17 (-1)                        | 31      | 37      | 18 (2)                       | 45      | 44      |
| 9/29/2023   | 17 (-1)                        | 40      | 31      | 17 (1)                       | 54      | 39      |

Values in parenthesis are the change from the previous report.



### Midwest and Northeast Sub-Regions

| Week Ending | New England DD Totals 9 |         |         | Middle Atlantic DD Totals 9 |         |         | East North Central DD Totals 9 |         |         | West North Central Totals 9 |         |         |
|-------------|-------------------------|---------|---------|-----------------------------|---------|---------|--------------------------------|---------|---------|-----------------------------|---------|---------|
|             | This Yr                 | Last Yr | 5Yr Avg | This Yr                     | Last Yr | 5Yr Avg | This Yr                        | Last Yr | 5Yr Avg | This Yr                     | Last Yr | 5Yr Avg |
| 7/28/2023   | 51 (0)                  | 67      | 54      | 62 (0)                      | 80      | 65      | 56 (0)                         | 56      | 52      | 76 (0)                      | 64      | 60      |
| 8/4/2023    | 27 (0)                  | 59      | 52      | 42 (0)                      | 65      | 59      | 47 (0)                         | 53      | 43      | 69 (0)                      | 63      | 49      |
| 8/11/2023   | 36 (0)                  | 78      | 57      | 50 (0)                      | 87      | 65      | 41 (0)                         | 58      | 53      | 50 (0)                      | 65      | 61      |
| 8/18/2023   | 32 (0)                  | 27      | 43      | 52 (0)                      | 41      | 55      | 32 (0)                         | 29      | 45      | 38 (0)                      | 46      | 53      |
| 8/25/2023   | 23 (0)                  | 49      | 44      | 37 (0)                      | 61      | 54      | 56 (0)                         | 41      | 45      | 89 (0)                      | 44      | 49      |
| 9/1/2023    | 28 (0)                  | 50      | 42      | 41 (0)                      | 65      | 54      | 25 (0)                         | 45      | 49      | 44 (0)                      | 54      | 50      |
| 9/8/2023    | 52 (0)                  | 20      | 28      | 67 (0)                      | 39      | 41      | 53 (0)                         | 37      | 35      | 58 (0)                      | 43      | 42      |
| 9/15/2023   | 33 (1)                  | 25      | 30      | 39 (0)                      | 33      | 35      | 23 (-1)                        | 25      | 32      | 22 (0)                      | 29      | 41      |
| 9/22/2023   | 13 (-1)                 | 32      | 39      | 19 (0)                      | 31      | 36      | 16 (1)                         | 41      | 42      | 22 (3)                      | 54      | 49      |
| 9/29/2023   | 19 (-1)                 | 45      | 35      | 16 (0)                      | 38      | 29      | 15 (1)                         | 58      | 37      | 23 (2)                      | 46      | 42      |

Values in parenthesis are the change from the previous report.

Red numbers correspond to file locations on last page.

### South Region and Sub-Regions

| Week Ending | South Region DD Totals 8 |         |         | South Atlantic DD Totals 9 |         |         | East South Central Totals 9 |         |         | West South Central Totals 9 |         |         |
|-------------|--------------------------|---------|---------|----------------------------|---------|---------|-----------------------------|---------|---------|-----------------------------|---------|---------|
|             | This Yr                  | Last Yr | 5Yr Avg | This Yr                    | Last Yr | 5Yr Avg | This Yr                     | Last Yr | 5Yr Avg | This Yr                     | Last Yr | 5Yr Avg |
| 7/28/2023   | 94 (0)                   | 100     | 88      | 86 (0)                     | 90      | 82      | 82 (0)                      | 93      | 79      | 112 (0)                     | 118     | 102     |
| 8/4/2023    | 95 (0)                   | 96      | 86      | 80 (0)                     | 89      | 81      | 84 (0)                      | 81      | 75      | 126 (0)                     | 114     | 99      |
| 8/11/2023   | 98 (0)                   | 95      | 89      | 86 (0)                     | 89      | 83      | 78 (0)                      | 83      | 79      | 129 (0)                     | 110     | 104     |
| 8/18/2023   | 96 (0)                   | 77      | 86      | 89 (0)                     | 65      | 79      | 75 (0)                      | 66      | 78      | 120 (0)                     | 103     | 103     |
| 8/25/2023   | 99 (0)                   | 76      | 82      | 82 (0)                     | 74      | 77      | 94 (0)                      | 65      | 71      | 131 (0)                     | 85      | 97      |
| 9/1/2023    | 90 (0)                   | 84      | 85      | 81 (0)                     | 81      | 79      | 76 (0)                      | 78      | 76      | 112 (0)                     | 93      | 100     |
| 9/8/2023    | 89 (0)                   | 76      | 78      | 79 (0)                     | 76      | 74      | 74 (0)                      | 67      | 68      | 115 (0)                     | 82      | 91      |
| 9/15/2023   | 68 (1)                   | 59      | 69      | 66 (1)                     | 59      | 68      | 50 (2)                      | 41      | 62      | 82 (0)                      | 69      | 74      |
| 9/22/2023   | 55 (2)                   | 69      | 67      | 48 (1)                     | 58      | 61      | 42 (7)                      | 62      | 62      | 75 (2)                      | 90      | 80      |
| 9/29/2023   | 56 (1)                   | 51      | 53      | 49 (1)                     | 45      | 52      | 46 (4)                      | 37      | 41      | 75 (1)                      | 69      | 60      |

Values in parenthesis are the change from the previous report.

Red numbers correspond to file locations on last page.

### West Region and Sub-Regions

| Week Ending | West Region DD Totals 8 |         |         | Mountain DD Totals 9 |         |         | Pacific DD Totals 9 |         |         |
|-------------|-------------------------|---------|---------|----------------------|---------|---------|---------------------|---------|---------|
|             | This Yr                 | Last Yr | 5Yr Avg | This Yr              | Last Yr | 5Yr Avg | This Yr             | Last Yr | 5Yr Avg |
| 7/28/2023   | 74 (0)                  | 64      | 65      | 119 (0)              | 96      | 94      | 53 (0)              | 50      | 51      |
| 8/4/2023    | 66 (0)                  | 66      | 67      | 100 (0)              | 91      | 96      | 50 (0)              | 55      | 54      |
| 8/11/2023   | 60 (0)                  | 66      | 63      | 89 (0)               | 90      | 92      | 46 (0)              | 54      | 49      |
| 8/18/2023   | 72 (0)                  | 65      | 67      | 97 (0)               | 87      | 89      | 60 (0)              | 56      | 57      |
| 8/25/2023   | 53 (0)                  | 59      | 58      | 80 (0)               | 76      | 84      | 41 (0)              | 51      | 47      |
| 9/1/2023    | 63 (0)                  | 62      | 58      | 92 (0)               | 90      | 84      | 50 (0)              | 49      | 45      |
| 9/8/2023    | 45 (0)                  | 88      | 65      | 71 (0)               | 102     | 85      | 33 (0)              | 81      | 56      |
| 9/15/2023   | 50 (0)                  | 54      | 51      | 70 (0)               | 65      | 72      | 41 (1)              | 49      | 41      |
| 9/22/2023   | 34 (0)                  | 36      | 44      | 59 (1)               | 62      | 66      | 22 (0)              | 24      | 33      |
| 9/29/2023   | 33 (0)                  | 48      | 46      | 54 (1)               | 60      | 62      | 23 (0)              | 42      | 38      |

Values in parenthesis are the change from the previous report.

### Weekly U.S. Population Weighted Degree Days and Gas Storage Summary

| Week Ending | Weekly Degree Day Totals <sup>1</sup> |           |         | Gas Storage Levels (BCF) |           |         |        | Gas Storage Build/Draw |           |         |
|-------------|---------------------------------------|-----------|---------|--------------------------|-----------|---------|--------|------------------------|-----------|---------|
|             | This Year                             | Last Year | 5yr Avg | This Year                | Last Year | 5yr Avg | TY-5YR | This Year              | Last Year | 5yr Avg |
| 6/2/2023    | 38 (0)                                | 48        | 50      | 2550                     | 1988      | 2197    | 353    | 104                    | 99        | 100     |
| 6/9/2023    | 42 (0)                                | 44        | 51      | 2634                     | 2082      | 2281    | 353    | 84                     | 94        | 84      |
| 6/16/2023   | 41 (0)                                | 63        | 53      | 2729                     | 2158      | 2367    | 362    | 95                     | 76        | 86      |
| 6/23/2023   | 48 (0)                                | 61        | 56      | 2805                     | 2239      | 2447    | 358    | 76                     | 81        | 80      |
| 6/30/2023   | 59 (0)                                | 62        | 62      | 2881                     | 2302      | 2511    | 370    | 76                     | 63        | 64      |
| 7/7/2023    | 71 (0)                                | 71        | 70      | 2930                     | 2361      | 2566    | 364    | 49                     | 59        | 55      |
| 7/14/2023   | 68 (0)                                | 69        | 69      | 2971                     | 2396      | 2611    | 360    | 41                     | 35        | 45      |
| 7/21/2023   | 75 (0)                                | 78        | 75      | 2987                     | 2414      | 2642    | 345    | 16                     | 18        | 31      |
| 7/28/2023   | 76 (0)                                | 78        | 71      | 3001                     | 2451      | 2679    | 322    | 14                     | 37        | 37      |
| 8/4/2023    | 69 (0)                                | 74        | 67      | 3030                     | 2495      | 2725    | 305    | 29                     | 44        | 46      |
| 8/11/2023   | 68 (0)                                | 78        | 71      | 3065                     | 2516      | 2766    | 299    | 35                     | 21        | 41      |
| 8/18/2023   | 68 (0)                                | 58        | 67      | 3083                     | 2570      | 2815    | 268    | 18                     | 54        | 49      |
| 8/25/2023   | 69 (0)                                | 61        | 64      | 3115                     | 2631      | 2866    | 249    | 32                     | 61        | 51      |
| 9/1/2023    | 61 (0)                                | 67        | 65      | 3148                     | 2686      | 2926    | 222    | 33                     | 55        | 60      |
| 9/8/2023    | 67 (0)                                | 63        | 59      | 3209                     | 2760      | 3002    | 207    | 61                     | 74        | 76      |
| 9/15/2023   | 49 (0)                                | 46        | 51      | 3293                     | 2859      | 3086    | 207    | 84                     | 99        | 84      |
| 9/22/2023   | 35 (1)                                | 49        | 51      | 3404                     | 2962      | 3170    | 234    | 112                    | 103       | 84      |
| 9/29/2023   | 35 (1)                                | 49        | 44      | 3516                     | 3088      | 3273    | 243    | 112                    | 126       | 103     |

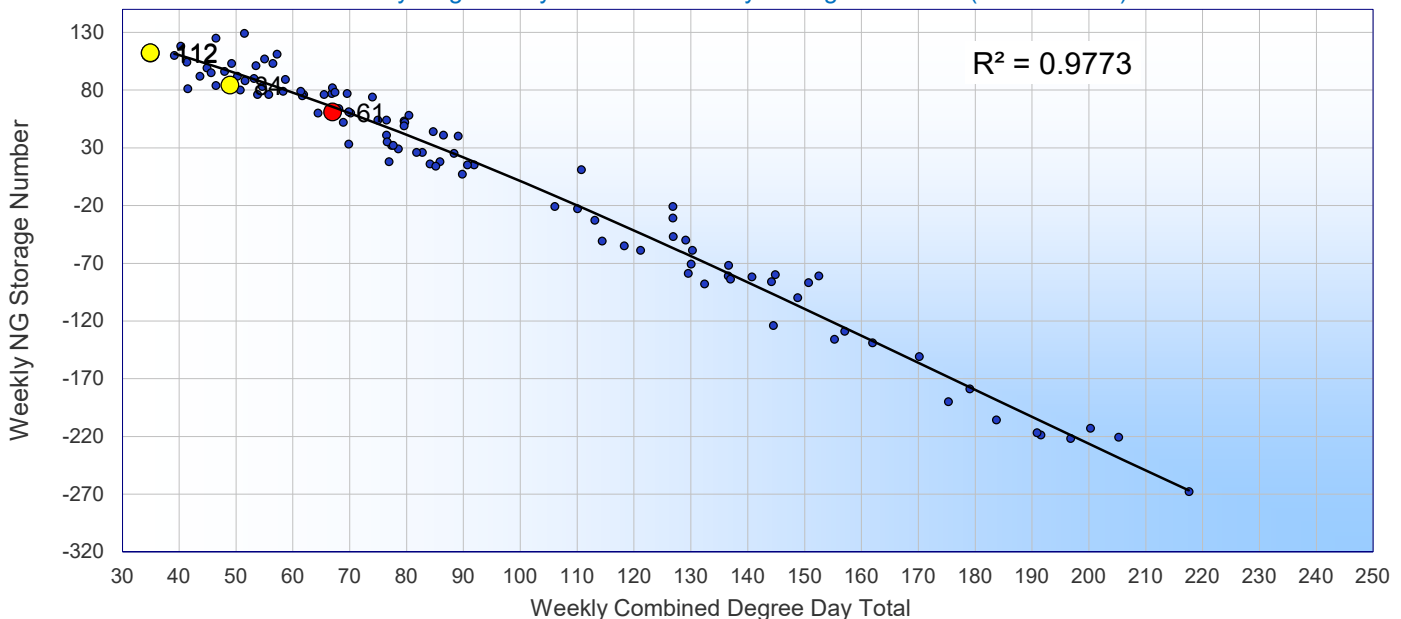
Values in parenthesis are the change from the previous report.

| Week Ending | Weekly Degree Day Totals |          |          |           | Storage Number Forecast Based On: |          |          |           |
|-------------|--------------------------|----------|----------|-----------|-----------------------------------|----------|----------|-----------|
|             | Model Min                | ModelAvg | Forecast | Model Max | Model Min                         | ModelAvg | Forecast | Model Max |
| 9/15/2023   | 49                       | 49       | 49       | 50        | 97                                | 96       | 84       | 95        |
| 9/22/2023   | 35                       | 42       | 35       | 51        | 111                               | 99       | 112      | 82        |
| 9/29/2023   | 35                       | 40       | 35       | 52        | 112                               | 103      | 112      | 81        |

Model Min, Avg, Max refer to forecast weekly degree day totals from weather forecast models

Storage model average absolute error over the previous two years of data is: **8.82 BCF**

Weekly Degree Day Totals vs. Weekly Storage Numbers (Last 2 Years)



Red dots indicate values for last week, yellow dots are this week, and next two weeks.

### Old EIA Region Weekly Degree Day Totals

| Week Ending | East Consuming Region 10 |           |         | West Consuming Region |           |         | Producing Region 10 |           |         |
|-------------|--------------------------|-----------|---------|-----------------------|-----------|---------|---------------------|-----------|---------|
|             | This Year                | Last Year | 5yr Avg | This Year             | Last Year | 5yr Avg | This Year           | Last Year | 5yr Avg |
| 7/7/2023    | 71                       | 71        | 58      | 53                    | 50        | 53      | 99                  | 105       | 94      |
| 7/14/2023   | 64                       | 62        | 63      | 56                    | 58        | 62      | 104                 | 114       | 98      |
| 7/21/2023   | 66                       | 72        | 63      | 71                    | 69        | 62      | 113                 | 115       | 103     |
| 7/28/2023   | 70                       | 76        | 66      | 72                    | 61        | 63      | 107                 | 111       | 97      |
| 8/4/2023    | 58                       | 70        | 65      | 64                    | 64        | 64      | 119                 | 107       | 94      |
| 8/11/2023   | 59                       | 78        | 63      | 57                    | 63        | 60      | 118                 | 104       | 99      |
| 8/18/2023   | 57                       | 46        | 61      | 68                    | 62        | 64      | 110                 | 96        | 98      |
| 8/25/2023   | 62                       | 58        | 56      | 53                    | 57        | 56      | 124                 | 79        | 91      |
| 9/1/2023    | 51                       | 64        | 56      | 60                    | 60        | 55      | 105                 | 89        | 94      |
| 9/8/2023    | 65                       | 51        | 55      | 46                    | 84        | 62      | 106                 | 78        | 85      |
| 9/15/2023   | 42                       | 39        | 47      | 48                    | 52        | 50      | 74                  | 63        | 71      |
| 9/22/2023   | 28                       | 46        | 46      | 32                    | 36        | 44      | 67                  | 84        | 75      |
| 9/29/2023   | 28                       | 46        | 46      | 32                    | 51        | 47      | 68                  | 60        | 56      |

Values highlighted in yellow are projected NG storage values based on forecast degree day totals

### EIA East Region Population Weighted Degree Days and Gas Storage Summary

| Week Ending | Weekly Degree Day Totals 13 |           |         | Gas Storage Levels (BCF) |           |         |        | Gas Storage Build/Draw |           |         |
|-------------|-----------------------------|-----------|---------|--------------------------|-----------|---------|--------|------------------------|-----------|---------|
|             | This Year                   | Last Year | 5yr Avg | This Year                | Last Year | 5yr Avg | TY-5YR | This Year              | Last Year | 5yr Avg |
| 7/7/2023    | 75                          | 72        | 71      | 653                      | 498       | 547     | 106    | 10                     | 19        | 19      |
| 7/14/2023   | 71                          | 64        | 67      | 661                      | 518       | 567     | 94     | 8                      | 20        | 20      |
| 7/21/2023   | 72                          | 74        | 75      | 670                      | 530       | 584     | 86     | 9                      | 12        | 17      |
| 7/28/2023   | 71                          | 81        | 70      | 680                      | 547       | 603     | 77     | 10                     | 17        | 19      |
| 8/4/2023    | 58                          | 74        | 67      | 700                      | 562       | 622     | 78     | 20                     | 15        | 19      |
| 8/11/2023   | 64                          | 85        | 72      | 717                      | 570       | 638     | 79     | 17                     | 8         | 16      |
| 8/18/2023   | 66                          | 49        | 64      | 731                      | 594       | 659     | 72     | 14                     | 24        | 21      |
| 8/25/2023   | 57                          | 63        | 63      | 751                      | 612       | 680     | 71     | 20                     | 18        | 21      |
| 9/1/2023    | 57                          | 69        | 64      | 766                      | 632       | 702     | 64     | 15                     | 20        | 22      |
| 9/8/2023    | 69                          | 54        | 54      | 781                      | 657       | 725     | 56     | 15                     | 25        | 23      |
| 9/15/2023   | 49                          | 43        | 50      | 801                      | 686       | 751     | 50     | 20                     | 29        | 26      |
| 9/22/2023   | 32                          | 44        | 49      | 825                      | 717       | 778     | 47     | 24                     | 31        | 27      |
| 9/29/2023   | 31                          | 43        | 41      | 849                      | 751       | 807     | 42     | 24                     | 34        | 29      |

Values highlighted in yellow are projected NG storage values based on forecast degree day totals

### EIA Midwest Region Population Weighted Degree Days and Gas Storage Summary

| Week Ending | Weekly Degree Day Totals 13 |           |         | Gas Storage Levels (BCF) |           |         |        | Gas Storage Build/Draw |           |         |
|-------------|-----------------------------|-----------|---------|--------------------------|-----------|---------|--------|------------------------|-----------|---------|
|             | This Year                   | Last Year | 5yr Avg | This Year                | Last Year | 5yr Avg | TY-5YR | This Year              | Last Year | 5yr Avg |
| 7/7/2023    | 61                          | 69        | 69      | 724                      | 583       | 619     | 105    | 19                     | 25        | 23      |
| 7/14/2023   | 46                          | 55        | 58      | 741                      | 605       | 642     | 99     | 17                     | 22        | 23      |
| 7/21/2023   | 50                          | 68        | 65      | 757                      | 623       | 663     | 94     | 16                     | 18        | 21      |
| 7/28/2023   | 65                          | 64        | 58      | 775                      | 640       | 684     | 91     | 18                     | 17        | 21      |
| 8/4/2023    | 57                          | 59        | 48      | 793                      | 660       | 706     | 87     | 18                     | 20        | 22      |
| 8/11/2023   | 47                          | 62        | 58      | 812                      | 681       | 731     | 81     | 19                     | 21        | 25      |
| 8/18/2023   | 38                          | 38        | 51      | 831                      | 710       | 759     | 72     | 19                     | 29        | 28      |
| 8/25/2023   | 71                          | 46        | 50      | 853                      | 742       | 788     | 65     | 22                     | 32        | 29      |
| 9/1/2023    | 36                          | 52        | 53      | 877                      | 772       | 818     | 59     | 24                     | 30        | 30      |
| 9/8/2023    | 57                          | 43        | 41      | 898                      | 804       | 851     | 47     | 21                     | 32        | 33      |
| 9/15/2023   | 26                          | 28        | 37      | 920                      | 839       | 883     | 37     | 22                     | 35        | 32      |
| 9/22/2023   | 20                          | 48        | 46      | 941                      | 874       | 914     | 27     | 22                     | 35        | 31      |
| 9/29/2023   | 21                          | 53        | 39      | 963                      | 911       | 949     | 14     | 22                     | 37        | 35      |

Values highlighted in yellow are projected NG storage values based on forecast degree day totals



### EIA Mountain Region Population Weighted Degree Days and Gas Storage Summary

| Week Ending | Weekly Degree Day Totals <b>13</b> |           |         | Gas Storage Levels (BCF) |           |         |        | Gas Storage Build/Draw |           |         |
|-------------|------------------------------------|-----------|---------|--------------------------|-----------|---------|--------|------------------------|-----------|---------|
|             | This Year                          | Last Year | 5yr Avg | This Year                | Last Year | 5yr Avg | TY-5YR | This Year              | Last Year | 5yr Avg |
| 7/7/2023    | 85                                 | 86        | 84      | 180                      | 142       | 158     | 22     | 7                      | 5         | 5       |
| 7/14/2023   | 94                                 | 101       | 95      | 186                      | 144       | 161     | 25     | 6                      | 2         | 3       |
| 7/21/2023   | 106                                | 108       | 96      | 189                      | 144       | 164     | 25     | 3                      | 0         | 3       |
| 7/28/2023   | 112                                | 90        | 88      | 191                      | 147       | 167     | 24     | 2                      | 3         | 3       |
| 8/4/2023    | 95                                 | 87        | 89      | 196                      | 148       | 169     | 27     | 5                      | 1         | 2       |
| 8/11/2023   | 82                                 | 85        | 87      | 202                      | 151       | 172     | 30     | 6                      | 3         | 3       |
| 8/18/2023   | 89                                 | 82        | 84      | 206                      | 153       | 175     | 31     | 4                      | 2         | 3       |
| 8/25/2023   | 80                                 | 72        | 79      | 213                      | 156       | 178     | 35     | 7                      | 3         | 3       |
| 9/1/2023    | 85                                 | 84        | 78      | 218                      | 159       | 181     | 37     | 5                      | 3         | 3       |
| 9/8/2023    | 68                                 | 94        | 78      | 225                      | 162       | 185     | 40     | 7                      | 3         | 4       |
| 9/15/2023   | 64                                 | 61        | 68      | 232                      | 167       | 189     | 43     | 7                      | 5         | 4       |
| 9/22/2023   | 54                                 | 60        | 63      | 240                      | 175       | 194     | 46     | 8                      | 8         | 5       |
| 9/29/2023   | 50                                 | 58        | 60      | 248                      | 183       | 200     | 48     | 8                      | 8         | 6       |

Values highlighted in yellow are projected NG storage values based on forecast degree day totals

### EIA Pacific Region Population Weighted Degree Days and Gas Storage Summary

| Week Ending | Weekly Degree Day Totals <b>13</b> |           |         | Gas Storage Levels (BCF) |           |         |        | Gas Storage Build/Draw |           |         |
|-------------|------------------------------------|-----------|---------|--------------------------|-----------|---------|--------|------------------------|-----------|---------|
|             | This Year                          | Last Year | 5yr Avg | This Year                | Last Year | 5yr Avg | TY-5YR | This Year              | Last Year | 5yr Avg |
| 7/7/2023    | 39                                 | 33        | 38      | 225                      | 248       | 266     | -41    | 9                      | 9         | 5       |
| 7/14/2023   | 40                                 | 38        | 47      | 232                      | 252       | 268     | -36    | 7                      | 4         | 2       |
| 7/21/2023   | 58                                 | 51        | 47      | 232                      | 253       | 267     | -35    | 0                      | 1         | -1      |
| 7/28/2023   | 54                                 | 50        | 51      | 230                      | 253       | 266     | -36    | -2                     | 0         | -1      |
| 8/4/2023    | 50                                 | 55        | 54      | 233                      | 252       | 264     | -31    | 3                      | -1        | -2      |
| 8/11/2023   | 46                                 | 54        | 49      | 240                      | 249       | 263     | -23    | 7                      | -3        | -1      |
| 8/18/2023   | 60                                 | 55        | 56      | 242                      | 244       | 261     | -19    | 2                      | -5        | -2      |
| 8/25/2023   | 41                                 | 51        | 47      | 248                      | 241       | 261     | -13    | 6                      | -3        | 0       |
| 9/1/2023    | 50                                 | 49        | 45      | 252                      | 238       | 262     | -10    | 4                      | -3        | 1       |
| 9/8/2023    | 33                                 | 82        | 56      | 261                      | 235       | 262     | -1     | 9                      | -3        | 0       |
| 9/15/2023   | 41                                 | 49        | 41      | 267                      | 237       | 265     | 2      | 6                      | 2         | 3       |
| 9/22/2023   | 22                                 | 24        | 34      | 278                      | 242       | 269     | 9      | 11                     | 5         | 4       |
| 9/29/2023   | 23                                 | 43        | 39      | 290                      | 246       | 273     | 17     | 11                     | 4         | 4       |

Values highlighted in yellow are projected NG storage values based on forecast degree day totals

### EIA South Central Region Population Weighted Degree Days and Gas Storage Summary

| Week Ending | Weekly Degree Day Totals <b>13</b> |           |         | Gas Storage Levels (BCF) |           |         |        | Gas Storage Build/Draw |           |         |
|-------------|------------------------------------|-----------|---------|--------------------------|-----------|---------|--------|------------------------|-----------|---------|
|             | This Year                          | Last Year | 5yr Avg | This Year                | Last Year | 5yr Avg | TY-5YR | This Year              | Last Year | 5yr Avg |
| 7/7/2023    | 99                                 | 106       | 94      | 1147                     | 890       | 976     | 171    | 3                      | 1         | 3       |
| 7/14/2023   | 103                                | 115       | 98      | 1150                     | 876       | 972     | 178    | 3                      | -14       | -4      |
| 7/21/2023   | 113                                | 116       | 103     | 1139                     | 864       | 964     | 175    | -11                    | -12       | -8      |
| 7/28/2023   | 107                                | 113       | 98      | 1124                     | 865       | 961     | 163    | -15                    | 1         | -3      |
| 8/4/2023    | 119                                | 108       | 94      | 1108                     | 873       | 963     | 145    | -16                    | 8         | 2       |
| 8/11/2023   | 120                                | 105       | 100     | 1093                     | 867       | 962     | 131    | -15                    | -6        | -1      |
| 8/18/2023   | 111                                | 97        | 99      | 1072                     | 870       | 960     | 112    | -21                    | 3         | -2      |
| 8/25/2023   | 125                                | 80        | 92      | 1050                     | 880       | 959     | 91     | -22                    | 10        | -1      |
| 9/1/2023    | 106                                | 91        | 95      | 1035                     | 886       | 963     | 72     | -15                    | 6         | 4       |
| 9/8/2023    | 107                                | 79        | 86      | 1032                     | 902       | 978     | 54     | -3                     | 16        | 15      |
| 9/15/2023   | 76                                 | 64        | 72      | 1041                     | 931       | 998     | 43     | 9                      | 29        | 20      |
| 9/22/2023   | 69                                 | 85        | 76      | 1053                     | 955       | 1015    | 38     | 13                     | 24        | 17      |
| 9/29/2023   | 70                                 | 61        | 57      | 1066                     | 997       | 1044    | 22     | 12                     | 42        | 29      |

Values highlighted in yellow are projected NG storage values based on forecast degree day totals

### Weekly Degree Day and DOE Storage Number Comparison Tables

#### Week Ending 9/8/2023 Comparisons

| Week Ending | Pop Wtd Tot DDs | Storage Number | Holiday Week? |
|-------------|-----------------|----------------|---------------|
| 9/8/2023    | 67              | 61*            | No            |
| 4/28/2023   | 66              | 54             | No            |
| 10/21/2022  | 68              | 52             | No            |
| 4/15/2022   | 68              | 53             | No            |
| 4/10/2020   | 65              | 73             | No            |
| 4/24/2020   | 74              | 70             | No            |
| 5/15/2020   | 60              | 81             | No            |
| 4/7/2023    | 74              | 25             | No            |
| 4/16/2021   | 59              | 38             | No            |
| 11/6/2020   | 76              | 8              | No            |
| 11/13/2020  | 57              | 31             | No            |
| 4/22/2022   | 77              | 40             | No            |
| Average     | 68              | 48             | w/ Holiday    |
| Average     | 68              | 48             | wo/ Holiday   |
| Avg Best    | 68              | 48             |               |

#### Week Ending 9/15/2023 Comparisons

| Week Ending | Pop Wtd Tot DDs | Storage Number | Holiday Week? |
|-------------|-----------------|----------------|---------------|
| 9/15/2023   | 49              | 84*            | No            |
| 4/21/2023   | 49              | 79             | No            |
| 10/23/2020  | 48              | 29             | No            |
| 4/14/2023   | 50              | 75             | No            |
| 5/1/2020    | 48              | 109            | No            |
| 11/4/2022   | 50              | 79             | No            |
| 4/9/2021    | 51              | 61             | No            |
| 4/29/2022   | 51              | 77             | No            |
| 5/14/2021   | 52              | 71             | No            |
| 10/28/2022  | 46              | 107            | No            |
| 4/30/2021   | 43              | 60             | No            |
| 10/25/2019  | 55              | 89             | No            |
| Average     | 49              | 76             | w/ Holiday    |
| Average     | 49              | 76             | wo/ Holiday   |
| Avg Best    | 49              | 75             |               |

#### Week Ending 9/22/2023 Comparisons

| Week Ending | Pop Wtd Tot DDs | Storage Number | Holiday Week? |
|-------------|-----------------|----------------|---------------|
| 9/22/2023   | 35              | 112*           | No            |
| 5/7/2021    | 33              | 71             | No            |
| 10/22/2021  | 38              | 87             | No            |
| 10/11/2019  | 32              | 104            | No            |
| 10/9/2020   | 31              | 46             | No            |
| 10/14/2022  | 39              | 111            | No            |
| 5/13/2022   | 30              | 89             | No            |
| 10/7/2022   | 29              | 125            | No            |
| 5/6/2022    | 41              | 76             | No            |
| 10/16/2020  | 28              | 49             | No            |
| 5/8/2020    | 43              | 103            | No            |
| 4/30/2021   | 43              | 60             | No            |
| Average     | 35              | 84             | w/ Holiday    |
| Average     | 35              | 84             | wo/ Holiday   |
| Avg Best    | 36              | 82             |               |

#### Week Ending 9/29/2023 Comparisons

| Week Ending | Pop Wtd Tot DDs | Storage Number | Holiday Week? |
|-------------|-----------------|----------------|---------------|
| 9/29/2023   | 35              | 112*           | No            |
| 5/7/2021    | 33              | 71             | No            |
| 10/22/2021  | 38              | 87             | No            |
| 10/11/2019  | 32              | 104            | No            |
| 10/9/2020   | 31              | 46             | No            |
| 10/14/2022  | 39              | 111            | No            |
| 5/13/2022   | 30              | 89             | No            |
| 10/7/2022   | 29              | 125            | No            |
| 5/6/2022    | 41              | 76             | No            |
| 10/16/2020  | 28              | 49             | No            |
| 5/8/2020    | 43              | 103            | No            |
| 4/30/2021   | 43              | 60             | No            |
| Average     | 35              | 84             | w/ Holiday    |
| Average     | 35              | 84             | wo/ Holiday   |
| Avg Best    | 36              | 82             |               |

\*Denotes projected values from page 3 table

The above charts compare the weekly total gas weighted degree days for last week, this week, and next week to the 11 weeks during the past 5 years that had the most similar gas weighted degree day totals. If a federal holiday occurred during a given week, it is marked as "Yes", otherwise as "No". Two averages of the gas weighted degree days and EIA storage numbers are presented. One that averages all 11 of the closest matches, and one that only averages weeks that did not have a holiday.

**NOTE:** these EIA average values should not be used as a direct forecast, but just as a weather-based estimate. The average EIA values are just averages of similar weeks, and no attempt is made to adjust for supply/demand differences, or other factors.

### Historical and Forecast Daily US Degree Day Totals with Comparison to Previous Years

GW=Residential and Commercial Gas Weighted, PW=Population Weighted, CMB DD=a combined weighted GW HDD + 0.72\*PW CDD total

|           | TY   | LY   | 10   | 30   | 30   | TY   | LY   | 10   | 30   | 30   | TY   | LY   | 10   | 30   | 30   | TY   | LY   | 10   | 30   | 30   |
|-----------|------|------|------|------|------|------|------|------|------|------|------|------|------|------|------|------|------|------|------|------|
|           | 2023 | 2022 | Year | Year | Year | 2023 | 2022 | Year | Year | Year | 2023 | 2022 | Year | Year | Year | 2023 | 2022 | Year | Year | Year |
|           | Fcst | Obs  | Avg  | Avg  | Anom | Fcst | Obs  | Avg  | Avg  | Anom | Fcst | Obs  | Avg  | Avg  | Anom | Fcst | Obs  | Avg  | Avg  | Anom |
|           | GW   | GW   | GW   | GW   | GW   | PW   | PW   | PW   | PW   | PW   | PW   | PW   | PW   | PW   | PW   | CMB  | CMB  | CMB  | CMB  | CMB  |
| Date      | HDD  | HDD  | HDD  | HDD  | HDD  | HDD  | HDD  | HDD  | HDD  | HDD  | CDD  | CDD  | CDD  | CDD  | CDD  | DD   | DD   | DD   | DD   | DD   |
| 8/13/2023 | 0.1  | 0.2  | 0.1  | 0.2  | -0.1 | 0.1  | 0.1  | 0.1  | 0.2  | -0.1 | 14.8 | 10.6 | 12.6 | 12.2 | 2.6  | 10.7 | 7.8  | 9.2  | 9    | 1.7  |
| 8/14/2023 | 0.1  | 0.0  | 0.2  | 0.3  | -0.2 | 0.1  | 0.0  | 0.2  | 0.2  | -0.1 | 14.0 | 11.0 | 12.2 | 11.8 | 2.2  | 10.2 | 8    | 9    | 8.7  | 1.5  |
| 8/15/2023 | 0.0  | 0.0  | 0.2  | 0.2  | -0.2 | 0.0  | 0.0  | 0.1  | 0.2  | -0.2 | 13.0 | 11.7 | 12.1 | 11.7 | 1.3  | 9.4  | 8.4  | 8.9  | 8.6  | 0.8  |
| 8/16/2023 | 0.0  | 0.0  | 0.1  | 0.2  | -0.2 | 0.0  | 0.0  | 0.1  | 0.1  | -0.1 | 12.5 | 11.6 | 12.4 | 12.1 | 0.4  | 9    | 8.4  | 9    | 8.9  | 0.1  |
| 8/17/2023 | 0.1  | 0.0  | 0.1  | 0.2  | -0.1 | 0.0  | 0.0  | 0.1  | 0.2  | -0.2 | 12.5 | 11.3 | 12.6 | 12.2 | 0.3  | 9.1  | 8.1  | 9.1  | 8.9  | 0.2  |
| 8/18/2023 | 0.1  | 0.1  | 0.1  | 0.2  | -0.1 | 0.1  | 0.1  | 0.1  | 0.2  | -0.1 | 11.6 | 11.2 | 12.7 | 11.9 | -0.3 | 8.5  | 8.1  | 9.2  | 8.8  | -0.3 |
| 8/19/2023 | 0.1  | 0.1  | 0.1  | 0.3  | -0.2 | 0.1  | 0.0  | 0.1  | 0.2  | -0.1 | 11.2 | 11.8 | 12.6 | 11.6 | -0.4 | 8.2  | 8.5  | 9.2  | 8.6  | -0.4 |
| 8/20/2023 | 0.0  | 0.0  | 0.1  | 0.3  | -0.2 | 0.0  | 0.0  | 0.1  | 0.2  | -0.2 | 13.7 | 12.9 | 12.4 | 11.4 | 2.3  | 9.9  | 9.3  | 9    | 8.5  | 1.4  |
| 8/21/2023 | 0.0  | 0.0  | 0.1  | 0.3  | -0.2 | 0.0  | 0.0  | 0.1  | 0.2  | -0.2 | 14.8 | 11.8 | 12.3 | 11.3 | 3.5  | 10.7 | 8.5  | 9    | 8.4  | 2.3  |
| 8/22/2023 | 0.1  | 0.0  | 0.1  | 0.2  | -0.1 | 0.1  | 0.0  | 0.1  | 0.2  | -0.1 | 13.6 | 11.5 | 12.1 | 11.2 | 2.4  | 9.9  | 8.3  | 8.8  | 8.3  | 1.6  |
| 8/23/2023 | 0.1  | 0.0  | 0.1  | 0.2  | -0.1 | 0.1  | 0.0  | 0.1  | 0.2  | -0.1 | 14.3 | 12.1 | 11.4 | 11.1 | 3.2  | 10.4 | 8.7  | 8.3  | 8.2  | 2.2  |
| 8/24/2023 | 0.0  | 0.0  | 0.2  | 0.2  | -0.2 | 0.0  | 0.0  | 0.2  | 0.2  | -0.2 | 15.0 | 12.7 | 11.6 | 11.3 | 3.7  | 10.8 | 9.2  | 8.5  | 8.4  | 2.4  |
| 8/25/2023 | 0.0  | 0.0  | 0.3  | 0.2  | -0.2 | 0.1  | 0.0  | 0.2  | 0.2  | -0.1 | 15.1 | 13.0 | 11.8 | 11.5 | 3.6  | 10.9 | 9.4  | 8.8  | 8.5  | 2.4  |
| 8/26/2023 | 0.1  | 0.0  | 0.2  | 0.2  | -0.1 | 0.1  | 0.0  | 0.2  | 0.2  | -0.1 | 14.6 | 13.1 | 12   | 11.6 | 3.0  | 10.6 | 9.5  | 8.9  | 8.6  | 2    |
| 8/27/2023 | 0.2  | 0.0  | 0.2  | 0.2  | 0.0  | 0.1  | 0.0  | 0.2  | 0.2  | -0.1 | 12.7 | 12.8 | 12.6 | 11.9 | 0.8  | 9.3  | 9.2  | 9.2  | 8.8  | 0.5  |
| 8/28/2023 | 0.1  | 0.0  | 0.1  | 0.2  | -0.1 | 0.1  | 0.0  | 0.1  | 0.2  | -0.1 | 11.7 | 13.4 | 12.4 | 11.7 | 0.0  | 8.5  | 9.7  | 9.1  | 8.6  | -0.1 |
| 8/29/2023 | 0.1  | 0.0  | 0.1  | 0.3  | -0.2 | 0.1  | 0.0  | 0.2  | 0.3  | -0.2 | 12.1 | 14.4 | 12.2 | 11.2 | 0.9  | 8.8  | 10.4 | 8.9  | 8.3  | 0.5  |
| 8/30/2023 | 0.5  | 0.0  | 0.1  | 0.3  | 0.1  | 0.3  | 0.0  | 0.1  | 0.3  | 0.0  | 11.3 | 13.8 | 11.9 | 10.9 | 0.4  | 8.6  | 9.9  | 8.7  | 8.2  | 0.4  |
| 8/31/2023 | 0.6  | 0.0  | 0.2  | 0.4  | 0.2  | 0.5  | 0.0  | 0.2  | 0.4  | 0.1  | 9.0  | 12.6 | 11.9 | 10.8 | -1.8 | 7    | 9.1  | 8.8  | 8.1  | -1.1 |
| 9/1/2023  | 0.2  | 0.1  | 0.4  | 0.5  | -0.3 | 0.2  | 0.1  | 0.3  | 0.5  | -0.3 | 8.8  | 12.4 | 11.5 | 10.5 | -1.7 | 6.5  | 9.1  | 8.7  | 8.1  | -1.6 |
| 9/2/2023  | 0.0  | 0.2  | 0.4  | 0.5  | -0.5 | 0.0  | 0.2  | 0.4  | 0.5  | -0.5 | 10.4 | 12.3 | 11.4 | 10.4 | 0.0  | 7.5  | 9.1  | 8.6  | 8    | -0.5 |
| 9/3/2023  | 0.1  | 0.1  | 0.3  | 0.5  | -0.4 | 0.1  | 0.1  | 0.3  | 0.4  | -0.3 | 13.5 | 12.7 | 11.4 | 10.3 | 3.2  | 9.8  | 9.2  | 8.4  | 7.9  | 1.9  |
| 9/4/2023  | 0.2  | 0.1  | 0.2  | 0.6  | -0.4 | 0.2  | 0.1  | 0.2  | 0.5  | -0.3 | 14.6 | 12.8 | 11.4 | 10.1 | 4.5  | 10.7 | 9.4  | 8.4  | 7.9  | 2.8  |
| 9/5/2023  | 0.2  | 0.1  | 0.4  | 0.7  | -0.5 | 0.2  | 0.1  | 0.4  | 0.6  | -0.4 | 15.1 | 12.6 | 11.2 | 9.7  | 5.4  | 11.1 | 9.2  | 8.5  | 7.6  | 3.5  |
| 9/6/2023  | 0.1  | 0.1  | 0.6  | 0.7  | -0.5 | 0.1  | 0.1  | 0.6  | 0.6  | -0.5 | 14.4 | 12.5 | 10.9 | 9.5  | 4.9  | 10.5 | 9.1  | 8.5  | 7.5  | 3    |
| 9/7/2023  | 0.3  | 0.1  | 0.4  | 0.6  | -0.3 | 0.3  | 0.1  | 0.4  | 0.5  | -0.2 | 13.1 | 11.9 | 10.4 | 9.4  | 3.7  | 9.8  | 8.6  | 7.9  | 7.3  | 2.5  |
| 9/8/2023  | 0.4  | 0.1  | 0.7  | 0.8  | -0.5 | 0.3  | 0.1  | 0.6  | 0.7  | -0.4 | 11.9 | 10.9 | 9.8  | 8.9  | 3.0  | 8.9  | 7.9  | 7.8  | 7.2  | 1.7  |
| 9/9/2023  | 0.2  | 0.3  | 1.1  | 1.0  | -0.8 | 0.2  | 0.3  | 1.0  | 0.8  | -0.6 | 11.0 | 9.6  | 9.43 | 8.5  | 2.5  | 8.1  | 7.3  | 7.9  | 7.1  | 1    |
| 9/10/2023 | 0.3  | 0.8  | 1.0  | 1.1  | -0.8 | 0.2  | 0.6  | 0.9  | 1.0  | -0.8 | 10.2 | 9.3  | 9.37 | 8.2  | 2.0  | 7.7  | 7.5  | 7.7  | 7    | 0.7  |
| 9/11/2023 | 0.5  | 0.6  | 1.0  | 1.1  | -0.6 | 0.4  | 0.4  | 0.8  | 1.0  | -0.6 | 9.9  | 9.2  | 9.23 | 7.8  | 2.1  | 7.6  | 7.2  | 7.6  | 6.7  | 0.9  |
| 9/12/2023 | 1.0  | 0.7  | 1.2  | 1.1  | 0.0  | 0.8  | 0.5  | 1.0  | 0.9  | -0.1 | 8.6  | 8.4  | 8.54 | 7.6  | 1.0  | 7.2  | 6.7  | 7.3  | 6.5  | 0.7  |
| 9/13/2023 | 1.6  | 0.5  | 1.4  | 1.2  | 0.4  | 1.2  | 0.4  | 1.2  | 1.0  | 0.2  | 6.9  | 7.5  | 7.94 | 7.8  | -0.9 | 6.5  | 5.9  | 7.1  | 6.8  | -0.3 |
| 9/14/2023 | 1.6  | 0.2  | 1.2  | 1.4  | 0.2  | 1.2  | 0.2  | 1.1  | 1.2  | 0.0  | 5.8  | 6.8  | 7.91 | 7.7  | -1.9 | 5.7  | 5.1  | 6.9  | 6.9  | -1.2 |
| 9/15/2023 | 1.4  | 0.6  | 1.2  | 1.8  | -0.4 | 1.2  | 0.7  | 1.1  | 1.5  | -0.3 | 5.3  | 6.6  | 8.26 | 7.4  | -2.1 | 5.2  | 5.4  | 7.2  | 7.1  | -1.9 |
| 9/16/2023 | 0.8  | 0.7  | 1.1  | 1.7  | -0.9 | 0.7  | 0.7  | 1.0  | 1.6  | -0.9 | 5.6  | 7.0  | 8.54 | 7.1  | -1.5 | 4.9  | 5.7  | 7.3  | 6.8  | -1.9 |
| 9/17/2023 | 0.6  | 0.6  | 1.2  | 1.6  | -1.0 | 0.5  | 0.7  | 1.1  | 1.5  | -1.0 | 6.1  | 8.5  | 8.64 | 7.0  | -0.9 | 5    | 6.7  | 7.4  | 6.6  | -1.6 |
| 9/18/2023 | 0.7  | 0.1  | 1.2  | 1.6  | -0.9 | 0.6  | 0.1  | 1.1  | 1.4  | -0.8 | 6.2  | 9.6  | 8.7  | 7.0  | -0.8 | 5.2  | 7    | 7.4  | 6.6  | -1.4 |
| 9/19/2023 | 0.6  | 0.2  | 1.4  | 1.9  | -1.3 | 0.5  | 0.2  | 1.3  | 1.7  | -1.2 | 6.3  | 10.3 | 8.34 | 6.8  | -0.5 | 5.1  | 7.6  | 7.4  | 6.8  | -1.7 |
| 9/20/2023 | 0.5  | 0.3  | 1.1  | 1.9  | -1.5 | 0.5  | 0.3  | 1.0  | 1.7  | -1.2 | 6.6  | 10.7 | 8.48 | 6.8  | -0.2 | 5.2  | 8    | 7.2  | 6.8  | -1.6 |
| 9/21/2023 | 0.4  | 0.7  | 1.3  | 2.1  | -1.7 | 0.4  | 0.6  | 1.2  | 1.8  | -1.4 | 6.8  | 9.9  | 7.91 | 6.7  | 0.1  | 5.3  | 7.8  | 7    | 7    | -1.7 |
| 9/22/2023 | 0.4  | 2.7  | 2.1  | 2.6  | -2.2 | 0.4  | 2.1  | 1.8  | 2.3  | -1.9 | 6.7  | 6.9  | 6.82 | 6.4  | 0.3  | 5.3  | 7.6  | 7    | 7.2  | -1.9 |
| 9/23/2023 | 0.5  | 5.1  | 2.2  | 2.9  | -2.4 | 0.5  | 4.5  | 2.0  | 2.5  | -2.0 | 6.5  | 5.2  | 6.41 | 6.0  | 0.5  | 5.2  | 8.9  | 6.8  | 7.2  | -2   |
| 9/24/2023 | 0.5  | 2.8  | 1.6  | 2.9  | -2.4 | 0.5  | 2.7  | 1.5  | 2.6  | -2.1 | 6.7  | 6.0  | 6.32 | 5.7  | 1.0  | 5.3  | 7.2  | 6.1  | 7    | -1.7 |
| 9/25/2023 | 0.6  | 1.6  | 1.5  | 2.7  | -2.1 | 0.6  | 1.5  | 1.4  | 2.4  | -1.8 | 6.4  | 6.7  | 6.72 | 5.6  | 0.8  | 5.2  | 6.5  | 6.3  | 6.8  | -1.6 |
| 9/26/2023 | 0.8  | 2.7  | 1.5  | 2.6  | -1.7 | 0.8  | 2.1  | 1.4  | 2.3  | -1.5 | 6.1  | 6.0  | 6.6  | 5.7  | 0.4  | 5.2  | 7.0  | 6.3  | 6.6  | -1.4 |

Green colors denote above average degree day totals

Red colors denote below average degree day totals

### Daily Regional U.S. Degree Day Totals (New EIA Regions)

GW HDD = Residential and Commercial gas weighted HDDs.

PW = Population weighted degree days

|               | EIA East DDs 13 |        |        |      | EIA Midwest DDs 13 |        |        |      | EIA Mountain DDs 13 |        |        |      | EIA Pacific DDs 13 |        |        |      | EIA South Central 13 |        |        |      |      |
|---------------|-----------------|--------|--------|------|--------------------|--------|--------|------|---------------------|--------|--------|------|--------------------|--------|--------|------|----------------------|--------|--------|------|------|
|               | GW HDD          | PW HDD | PW CDD | CMB  | GW HDD             | PW HDD | PW CDD | CMB  | GW HDD              | PW HDD | PW CDD | CMB  | GW HDD             | PW HDD | PW CDD | CMB  | GW HDD               | PW HDD | PW CDD | CMB  |      |
| Observed Data | 8/13/2023       | 0.0    | 0.0    | 15.1 | 10.9               | 0.1    | 0.1    | 8.8  | 6.5                 | 0.5    | 0.5    | 14.5 | 11.0               | 0.0    | 0.0    | 11.6 | 8.4                  | 0.0    | 0.0    | 25.0 | 18.0 |
|               | 8/14/2023       | 0.0    | 0.0    | 14.7 | 10.6               | 0.2    | 0.2    | 6.9  | 5.1                 | 0.5    | 0.4    | 14.2 | 10.7               | 0.0    | 0.0    | 13.1 | 9.4                  | 0.0    | 0.0    | 21.9 | 15.8 |
|               | 8/15/2023       | 0.0    | 0.0    | 13.2 | 9.5                | 0.1    | 0.0    | 4.6  | 3.4                 | 0.0    | 0.0    | 17.9 | 12.9               | 0.0    | 0.0    | 13.8 | 9.9                  | 0.0    | 0.0    | 19.4 | 14.0 |
|               | 8/16/2023       | 0.0    | 0.0    | 11.4 | 8.2                | 0.0    | 0.0    | 5.8  | 4.2                 | 0.0    | 0.0    | 20.8 | 15.0               | 0.0    | 0.0    | 14.3 | 10.3                 | 0.0    | 0.0    | 17.8 | 12.8 |
|               | 8/17/2023       | 0.0    | 0.0    | 11.5 | 8.3                | 0.2    | 0.2    | 5.6  | 4.2                 | 0.1    | 0.1    | 19.4 | 14.1               | 0.0    | 0.0    | 12.3 | 8.9                  | 0.0    | 0.0    | 20.5 | 14.8 |
|               | 8/18/2023       | 0.1    | 0.1    | 10.4 | 7.6                | 0.4    | 0.3    | 4.2  | 3.4                 | 0.0    | 0.0    | 18.2 | 13.1               | 0.0    | 0.0    | 9.3  | 6.7                  | 0.0    | 0.0    | 23.0 | 16.6 |
|               | 8/19/2023       | 0.2    | 0.2    | 8.3  | 6.1                | 0.1    | 0.1    | 8.2  | 6.0                 | 0.0    | 0.0    | 14.4 | 10.4               | 0.0    | 0.1    | 7.2  | 5.2                  | 0.0    | 0.0    | 24.9 | 17.9 |
|               | 8/20/2023       | 0.0    | 0.0    | 11.2 | 8.1                | 0.0    | 0.0    | 14.1 | 10.2                | 0.3    | 0.3    | 13.8 | 10.2               | 0.0    | 0.0    | 8.1  | 5.8                  | 0.0    | 0.0    | 25.7 | 18.5 |
|               | 8/21/2023       | 0.0    | 0.0    | 15.0 | 10.8               | 0.0    | 0.0    | 13.4 | 9.7                 | 0.1    | 0.1    | 14.8 | 10.7               | 0.1    | 0.1    | 6.4  | 4.7                  | 0.0    | 0.0    | 25.0 | 18.0 |
|               | 8/22/2023       | 0.0    | 0.0    | 11.5 | 8.3                | 0.1    | 0.1    | 14.4 | 10.5                | 0.0    | 0.0    | 15.9 | 11.5               | 0.2    | 0.3    | 7.1  | 5.3                  | 0.0    | 0.0    | 23.5 | 16.9 |
|               | 8/23/2023       | 0.3    | 0.2    | 9.7  | 7.2                | 0.0    | 0.0    | 18.9 | 13.6                | 0.1    | 0.1    | 16.6 | 12.0               | 0.1    | 0.1    | 9.2  | 6.7                  | 0.0    | 0.0    | 24.6 | 17.7 |
|               | 8/24/2023       | 0.1    | 0.1    | 10.9 | 7.9                | 0.0    | 0.0    | 18.7 | 13.5                | 0.1    | 0.1    | 17.1 | 12.4               | 0.0    | 0.0    | 9.2  | 6.6                  | 0.0    | 0.0    | 26.0 | 18.7 |
|               | 8/25/2023       | 0.0    | 0.1    | 13.3 | 9.6                | 0.0    | 0.0    | 15.5 | 11.2                | 0.4    | 0.3    | 15.8 | 11.8               | 0.0    | 0.0    | 8.0  | 5.8                  | 0.0    | 0.0    | 26.2 | 18.9 |
|               | 8/26/2023       | 0.0    | 0.0    | 15.1 | 10.9               | 0.4    | 0.3    | 9.0  | 6.8                 | 0.2    | 0.2    | 16.3 | 11.9               | 0.2    | 0.2    | 8.7  | 6.4                  | 0.0    | 0.0    | 25.3 | 18.2 |
|               | 8/27/2023       | 0.0    | 0.0    | 12.5 | 9.0                | 0.6    | 0.5    | 5.6  | 4.6                 | 0.1    | 0.0    | 17.2 | 12.4               | 0.2    | 0.2    | 9.6  | 7.1                  | 0.0    | 0.0    | 23.0 | 16.6 |
|               | 8/28/2023       | 0.1    | 0.1    | 10.5 | 7.7                | 0.2    | 0.2    | 6.1  | 4.6                 | 0.1    | 0.1    | 17.9 | 13.0               | 0.1    | 0.1    | 10.7 | 7.8                  | 0.0    | 0.0    | 19.6 | 14.1 |
|               | 8/29/2023       | 0.0    | 0.0    | 11.1 | 8.0                | 0.2    | 0.2    | 7.6  | 5.7                 | 0.1    | 0.1    | 17.6 | 12.8               | 0.3    | 0.5    | 10.3 | 7.7                  | 0.0    | 0.0    | 19.3 | 13.9 |
|               | 8/30/2023       | 0.2    | 0.1    | 10.9 | 8.0                | 1.4    | 1.3    | 3.6  | 4.0                 | 0.2    | 0.2    | 16.9 | 12.4               | 0.1    | 0.1    | 11.7 | 8.5                  | 0.0    | 0.0    | 19.0 | 13.7 |
|               | 8/31/2023       | 0.5    | 0.5    | 7.6  | 6.0                | 1.3    | 1.1    | 2.6  | 3.2                 | 0.2    | 0.2    | 16.3 | 11.9               | 0.3    | 0.4    | 8.0  | 6.0                  | 0.0    | 0.0    | 18.3 | 13.2 |
|               | 9/1/2023        | 0.5    | 0.5    | 6.3  | 5.1                | 0.1    | 0.1    | 5.6  | 4.2                 | 0.1    | 0.1    | 13.1 | 9.5                | 0.0    | 0.0    | 7.4  | 5.3                  | 0.0    | 0.0    | 18.8 | 13.5 |
|               | 9/2/2023        | 0.0    | 0.0    | 7.4  | 5.4                | 0.0    | 0.0    | 10.6 | 7.6                 | 0.1    | 0.1    | 14.6 | 10.6               | 0.0    | 0.0    | 7.5  | 5.4                  | 0.0    | 0.0    | 18.6 | 13.4 |
| 9/3/2023      | 0.0             | 0.0    | 12.8   | 9.2  | 0.0                | 0.0    | 15.2   | 10.9 | 0.3                 | 0.3    | 14.3   | 10.6 | 0.1                | 0.2    | 6.0    | 4.4  | 0.0                  | 0.0    | 20.7   | 14.9 |      |
| 9/4/2023      | 0.0             | 0.0    | 15.3   | 11.0 | 0.0                | 0.0    | 16.4   | 11.8 | 0.8                 | 0.8    | 12.7   | 9.9  | 0.6                | 0.8    | 4.4    | 3.7  | 0.0                  | 0.0    | 21.6   | 15.6 |      |
| 9/5/2023      | 0.0             | 0.0    | 16.7   | 12.0 | 0.0                | 0.0    | 16.2   | 11.7 | 1.2                 | 1.1    | 9.8    | 8.3  | 0.4                | 0.6    | 4.6    | 3.7  | 0.0                  | 0.0    | 23.2   | 16.7 |      |
| 9/6/2023      | 0.0             | 0.0    | 17.6   | 12.7 | 0.2                | 0.2    | 9.3    | 6.9  | 0.6                 | 0.7    | 11.6   | 9.0  | 0.2                | 0.2    | 6.5    | 4.8  | 0.0                  | 0.0    | 21.6   | 15.6 |      |
| 9/7/2023      | 0.0             | 0.0    | 16.7   | 12.0 | 0.9                | 0.9    | 4.1    | 3.9  | 0.4                 | 0.4    | 13.3   | 10.0 | 0.3                | 0.4    | 6.1    | 4.7  | 0.0                  | 0.0    | 22.3   | 16.1 |      |
| 9/8/2023      | 0.0             | 0.0    | 13.0   | 9.4  | 1.3                | 1.1    | 3.2    | 3.6  | 0.2                 | 0.2    | 14.7   | 10.8 | 0.1                | 0.2    | 9.0    | 6.6  | 0.0                  | 0.0    | 21.5   | 15.5 |      |
| 9/9/2023      | 0.0             | 0.0    | 11.5   | 8.3  | 0.7                | 0.6    | 3.4    | 3.1  | 0.4                 | 0.4    | 15.0   | 11.2 | 0.0                | 0.0    | 10.6   | 7.6  | 0.0                  | 0.0    | 17.9   | 12.9 |      |
| 9/10/2023     | 0.0             | 0.0    | 10.1   | 7.3  | 0.7                | 0.6    | 3.8    | 3.4  | 1.3                 | 1.2    | 13.1   | 10.8 | 0.1                | 0.1    | 10.7   | 7.8  | 0.0                  | 0.0    | 16.4   | 11.8 |      |
| 9/11/2023     | 0.0             | 0.0    | 11.1   | 8.0  | 1.3                | 1.1    | 3.2    | 3.6  | 2.0                 | 1.7    | 11.4   | 10.2 | 0.0                | 0.0    | 9.2    | 6.6  | 0.1                  | 0.1    | 15.0   | 10.9 |      |
| Forecast Data | 9/12/2023       | 0.1    | 0.0    | 10.4 | 7.5                | 3.2    | 2.9    | 1.8  | 4.5                 | 2.0    | 1.8    | 9.6  | 8.9                | 0.2    | 0.3    | 7.1  | 5.3                  | 0.1    | 0.1    | 13.6 | 9.9  |
|               | 9/13/2023       | 0.8    | 0.6    | 7.7  | 6.3                | 4.8    | 4.4    | 1.3  | 5.8                 | 0.9    | 0.9    | 8.1  | 6.8                | 0.1    | 0.1    | 5.6  | 4.1                  | 0.1    | 0.1    | 12.6 | 9.2  |
|               | 9/14/2023       | 1.5    | 1.1    | 5.4  | 5.4                | 3.5    | 3.2    | 1.2  | 4.4                 | 1.5    | 1.3    | 8.3  | 7.5                | 0.2    | 0.2    | 5.5  | 4.1                  | 0.0    | 0.0    | 12.1 | 8.7  |
|               | 9/15/2023       | 1.9    | 1.5    | 3.8  | 4.6                | 2.0    | 1.8    | 1.1  | 2.8                 | 2.5    | 2.1    | 8.5  | 8.6                | 0.0    | 0.0    | 6.0  | 4.3                  | 0.0    | 0.0    | 12.2 | 8.8  |
|               | 9/16/2023       | 1.1    | 0.9    | 4.2  | 4.2                | 1.0    | 0.9    | 1.5  | 2.1                 | 2.0    | 1.7    | 9.3  | 8.7                | 0.0    | 0.0    | 5.8  | 4.2                  | 0.0    | 0.0    | 12.5 | 9.0  |
|               | 9/17/2023       | 0.5    | 0.4    | 5.7  | 4.6                | 1.4    | 1.3    | 1.5  | 2.5                 | 0.8    | 0.7    | 10.2 | 8.1                | 0.1    | 0.2    | 4.9  | 3.6                  | 0.0    | 0.0    | 12.4 | 8.9  |
|               | 9/18/2023       | 0.6    | 0.5    | 5.9  | 4.9                | 1.7    | 1.5    | 1.5  | 2.8                 | 0.4    | 0.4    | 10.5 | 8.0                | 0.2    | 0.3    | 3.9  | 3.0                  | 0.0    | 0.0    | 12.8 | 9.2  |
|               | 9/19/2023       | 0.7    | 0.6    | 5.8  | 4.8                | 0.8    | 0.7    | 2.8  | 2.8                 | 0.5    | 0.5    | 9.9  | 7.7                | 0.4    | 0.6    | 2.8  | 2.5                  | 0.0    | 0.0    | 13.8 | 9.9  |
|               | 9/20/2023       | 0.5    | 0.5    | 5.8  | 4.7                | 0.3    | 0.3    | 4.2  | 3.3                 | 1.0    | 0.9    | 8.8  | 7.3                | 0.6    | 0.9    | 2.2  | 2.2                  | 0.0    | 0.0    | 14.8 | 10.7 |
|               | 9/21/2023       | 0.3    | 0.3    | 6.0  | 4.6                | 0.1    | 0.1    | 5.2  | 3.9                 | 1.5    | 1.4    | 8.2  | 7.4                | 0.6    | 0.9    | 2.1  | 2.1                  | 0.0    | 0.0    | 15.3 | 11.0 |
|               | 9/22/2023       | 0.4    | 0.4    | 5.8  | 4.5                | 0.2    | 0.2    | 4.9  | 3.7                 | 1.7    | 1.6    | 7.6  | 7.1                | 0.6    | 0.8    | 2.4  | 2.3                  | 0.0    | 0.0    | 15.4 | 11.1 |
|               | 9/23/2023       | 0.4    | 0.4    | 5.6  | 4.4                | 0.2    | 0.2    | 4.5  | 3.5                 | 1.9    | 1.7    | 7.2  | 7.1                | 0.6    | 0.8    | 2.7  | 2.5                  | 0.0    | 0.0    | 15.1 | 10.9 |
|               | 9/24/2023       | 0.4    | 0.4    | 6.0  | 4.7                | 0.2    | 0.2    | 4.3  | 3.3                 | 2.1    | 1.9    | 6.9  | 7.0                | 0.5    | 0.8    | 3.1  | 2.8                  | 0.0    | 0.0    | 15.0 | 10.8 |
|               | 9/25/2023       | 0.5    | 0.5    | 5.7  | 4.6                | 0.3    | 0.3    | 3.7  | 3.0                 | 2.3    | 2.1    | 6.7  | 7.1                | 0.6    | 0.9    | 3.6  | 3.2                  | 0.0    | 0.0    | 14.8 | 10.7 |
|               | 9/26/2023       | 0.7    | 0.7    | 5.3  | 4.6                | 0.6    | 0.6    | 3.0  | 2.8                 | 2.8    | 2.6    | 6.5  | 7.5                | 0.7    | 1.0    | 3.9  | 3.5                  | 0.0    | 0.0    | 14.2 | 10.2 |

CMB is the gas weighted HDDs plus 0.72 times the population weighted CDDs.

Red numbers correspond to file locations on last page.

### Daily Regional (Old EIA Regions) and U.S. Degree Day Totals

GW HDD = Residential and Commercial gas weighted HDDs.

PW = Population weighted degree days

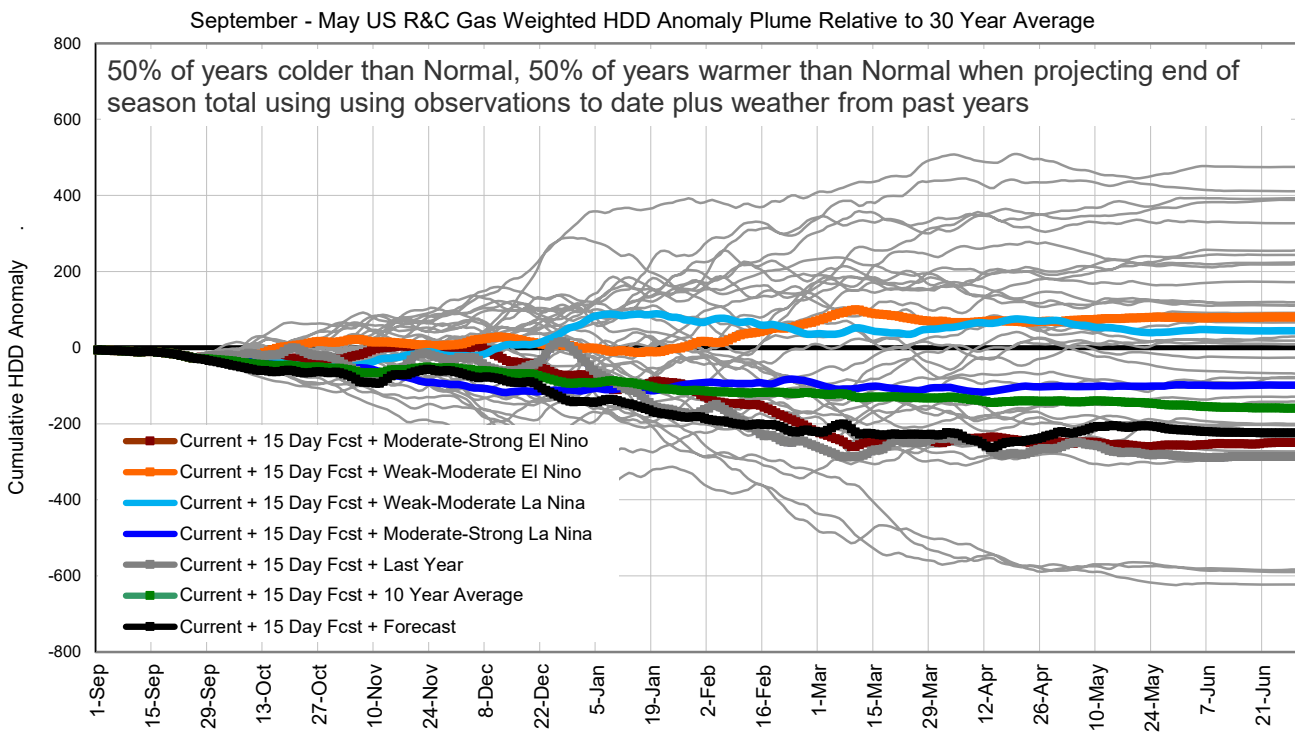
|               | EIA East DDs 10 |        |        |      | EIA West DDs 10 |        |        |      | EIA Producing 10 |        |        |      | Total U.S. DDs 1 |        |        |      | Heat Oil 6 HDDs | Pro 6 pane HDDs |     |
|---------------|-----------------|--------|--------|------|-----------------|--------|--------|------|------------------|--------|--------|------|------------------|--------|--------|------|-----------------|-----------------|-----|
|               | GW HDD          | PW HDD | PW CDD | CMB  | GW HDD          | PW HDD | PW CDD | CMB  | GW HDD           | PW HDD | PW CDD | CMB  | GW HDD           | PW HDD | PW CDD | CMB  |                 |                 |     |
| Observed Data | 8/13/2023       | 0.0    | 0.0    | 13.3 | 9.6             | 0.2    | 0.2    | 12.0 | 8.9              | 0.0    | 0.0    | 24.6 | 17.7             | 0.1    | 0.1    | 14.8 | 10.7            | 0.0             | 0.1 |
|               | 8/14/2023       | 0.0    | 0.0    | 12.4 | 9.0             | 0.2    | 0.2    | 12.9 | 9.5              | 0.0    | 0.0    | 21.5 | 15.5             | 0.1    | 0.1    | 14.0 | 10.2            | 0.0             | 0.1 |
|               | 8/15/2023       | 0.0    | 0.0    | 10.6 | 7.6             | 0.0    | 0.0    | 14.7 | 10.6             | 0.0    | 0.0    | 19.2 | 13.8             | 0.0    | 0.0    | 13.0 | 9.4             | 0.0             | 0.0 |
|               | 8/16/2023       | 0.0    | 0.0    | 9.6  | 6.9             | 0.0    | 0.0    | 16.2 | 11.7             | 0.0    | 0.0    | 17.8 | 12.8             | 0.0    | 0.0    | 12.5 | 9.0             | 0.0             | 0.0 |
|               | 8/17/2023       | 0.0    | 0.0    | 9.7  | 7.0             | 0.1    | 0.1    | 14.1 | 10.3             | 0.0    | 0.0    | 20.4 | 14.7             | 0.1    | 0.0    | 12.5 | 9.1             | 0.0             | 0.1 |
|               | 8/18/2023       | 0.2    | 0.2    | 8.6  | 6.4             | 0.1    | 0.1    | 11.7 | 8.5              | 0.0    | 0.0    | 22.8 | 16.4             | 0.1    | 0.1    | 11.6 | 8.5             | 0.1             | 0.2 |
|               | 8/19/2023       | 0.2    | 0.2    | 8.2  | 6.1             | 0.0    | 0.0    | 9.5  | 6.9              | 0.0    | 0.0    | 24.6 | 17.7             | 0.1    | 0.1    | 11.2 | 8.2             | 0.3             | 0.2 |
|               | 8/20/2023       | 0.0    | 0.0    | 12.3 | 8.9             | 0.1    | 0.1    | 9.4  | 6.9              | 0.0    | 0.0    | 25.5 | 18.4             | 0.0    | 0.0    | 13.7 | 9.9             | 0.0             | 0.1 |
|               | 8/21/2023       | 0.0    | 0.0    | 14.7 | 10.6            | 0.1    | 0.1    | 8.5  | 6.2              | 0.0    | 0.0    | 24.8 | 17.9             | 0.0    | 0.0    | 14.8 | 10.7            | 0.0             | 0.0 |
|               | 8/22/2023       | 0.0    | 0.0    | 12.4 | 9.0             | 0.2    | 0.2    | 10.1 | 7.4              | 0.0    | 0.0    | 23.2 | 16.7             | 0.1    | 0.1    | 13.6 | 9.9             | 0.1             | 0.1 |
|               | 8/23/2023       | 0.2    | 0.2    | 12.6 | 9.2             | 0.1    | 0.1    | 12.1 | 8.8              | 0.0    | 0.0    | 24.0 | 17.3             | 0.1    | 0.1    | 14.3 | 10.4            | 0.5             | 0.2 |
|               | 8/24/2023       | 0.0    | 0.1    | 13.5 | 9.8             | 0.0    | 0.0    | 11.7 | 8.4              | 0.0    | 0.0    | 25.3 | 18.2             | 0.0    | 0.0    | 15.0 | 10.8            | 0.2             | 0.1 |
|               | 8/25/2023       | 0.0    | 0.0    | 14.1 | 10.2            | 0.1    | 0.1    | 10.6 | 7.8              | 0.0    | 0.0    | 25.7 | 18.5             | 0.0    | 0.1    | 15.1 | 10.9            | 0.3             | 0.1 |
|               | 8/26/2023       | 0.1    | 0.1    | 13.4 | 9.7             | 0.3    | 0.3    | 10.8 | 8.0              | 0.0    | 0.0    | 24.8 | 17.9             | 0.1    | 0.1    | 14.6 | 10.6            | 0.0             | 0.2 |
|               | 8/27/2023       | 0.2    | 0.2    | 10.5 | 7.8             | 0.2    | 0.2    | 11.6 | 8.6              | 0.0    | 0.0    | 22.7 | 16.3             | 0.2    | 0.1    | 12.7 | 9.3             | 0.1             | 0.3 |
|               | 8/28/2023       | 0.2    | 0.1    | 9.1  | 6.7             | 0.1    | 0.1    | 12.9 | 9.4              | 0.0    | 0.0    | 19.5 | 14.0             | 0.1    | 0.1    | 11.7 | 8.5             | 0.1             | 0.1 |
|               | 8/29/2023       | 0.1    | 0.0    | 10.0 | 7.3             | 0.3    | 0.4    | 12.6 | 9.3              | 0.0    | 0.0    | 19.1 | 13.8             | 0.1    | 0.1    | 12.1 | 8.8             | 0.1             | 0.1 |
|               | 8/30/2023       | 0.7    | 0.5    | 8.6  | 6.9             | 0.1    | 0.2    | 13.0 | 9.5              | 0.0    | 0.0    | 18.8 | 13.5             | 0.5    | 0.3    | 11.3 | 8.6             | 0.2             | 0.6 |
|               | 8/31/2023       | 0.8    | 0.7    | 6.0  | 5.2             | 0.3    | 0.3    | 10.3 | 7.7              | 0.0    | 0.0    | 18.2 | 13.1             | 0.6    | 0.5    | 9.0  | 7.0             | 1.0             | 0.8 |
|               | 9/1/2023        | 0.4    | 0.4    | 6.0  | 4.7             | 0.0    | 0.0    | 9.1  | 6.6              | 0.0    | 0.0    | 18.7 | 13.5             | 0.2    | 0.2    | 8.8  | 6.5             | 1.1             | 0.4 |
|               | 9/2/2023        | 0.0    | 0.0    | 8.3  | 6.0             | 0.0    | 0.0    | 10.0 | 7.2              | 0.0    | 0.0    | 18.5 | 13.3             | 0.0    | 0.0    | 10.4 | 7.5             | 0.2             | 0.0 |
| 9/3/2023      | 0.0             | 0.0    | 13.4   | 9.6  | 0.2             | 0.2    | 9.2    | 6.8  | 0.0              | 0.0    | 20.5   | 14.8 | 0.1              | 0.1    | 13.5   | 9.8  | 0.0             | 0.1             |     |
| 9/4/2023      | 0.0             | 0.0    | 15.5   | 11.2 | 0.6             | 0.8    | 7.7    | 6.2  | 0.0              | 0.0    | 21.3   | 15.3 | 0.2              | 0.2    | 14.6   | 10.7 | 0.1             | 0.2             |     |
| 9/5/2023      | 0.0             | 0.0    | 16.5   | 11.9 | 0.7             | 0.8    | 6.8    | 5.6  | 0.0              | 0.0    | 22.8   | 16.4 | 0.2              | 0.2    | 15.1   | 11.1 | 0.1             | 0.2             |     |
| 9/6/2023      | 0.0             | 0.0    | 15.2   | 11.0 | 0.4             | 0.5    | 7.7    | 6.0  | 0.0              | 0.0    | 21.3   | 15.3 | 0.1              | 0.1    | 14.4   | 10.5 | 0.1             | 0.2             |     |
| 9/7/2023      | 0.2             | 0.1    | 12.9   | 9.5  | 0.8             | 0.8    | 7.9    | 6.4  | 0.0              | 0.0    | 22.2   | 16.0 | 0.3              | 0.3    | 13.1   | 9.8  | 0.1             | 0.5             |     |
| 9/8/2023      | 0.5             | 0.3    | 10.1   | 7.8  | 0.2             | 0.3    | 10.1   | 7.5  | 0.0              | 0.0    | 21.3   | 15.3 | 0.4              | 0.3    | 11.9   | 8.9  | 0.1             | 0.5             |     |
| 9/9/2023      | 0.3             | 0.2    | 9.0    | 6.7  | 0.2             | 0.2    | 11.5   | 8.5  | 0.0              | 0.0    | 17.9   | 12.9 | 0.2              | 0.2    | 11.0   | 8.1  | 0.1             | 0.3             |     |
| 9/10/2023     | 0.3             | 0.2    | 8.2    | 6.2  | 0.6             | 0.5    | 10.8   | 8.4  | 0.0              | 0.0    | 16.4   | 11.8 | 0.3              | 0.2    | 10.2   | 7.7  | 0.1             | 0.4             |     |
| 9/11/2023     | 0.5             | 0.3    | 8.7    | 6.7  | 0.8             | 0.7    | 9.5    | 7.7  | 0.1              | 0.1    | 14.8   | 10.8 | 0.5              | 0.4    | 9.9    | 7.6  | 0.1             | 0.6             |     |
| Forecast Data | 9/12/2023       | 1.1    | 0.8    | 7.8  | 6.7             | 1.3    | 1.3    | 7.7  | 6.9              | 0.2    | 0.1    | 13.1 | 9.6              | 1.0    | 0.8    | 8.6  | 7.2             | 0.3             | 1.2 |
|               | 9/13/2023       | 2.2    | 1.6    | 5.8  | 6.4             | 1.0    | 0.9    | 6.2  | 5.4              | 0.1    | 0.1    | 12.2 | 8.9              | 1.6    | 1.2    | 6.9  | 6.5             | 0.7             | 1.8 |
|               | 9/14/2023       | 2.4    | 1.8    | 4.0  | 5.3             | 0.7    | 0.7    | 6.4  | 5.3              | 0.0    | 0.0    | 11.7 | 8.5              | 1.6    | 1.2    | 5.8  | 5.7             | 1.2             | 1.7 |
|               | 9/15/2023       | 2.0    | 1.6    | 3.0  | 4.2             | 0.9    | 0.7    | 6.7  | 5.7              | 0.0    | 0.0    | 11.9 | 8.6              | 1.4    | 1.2    | 5.3  | 5.2             | 2.0             | 1.5 |
|               | 9/16/2023       | 1.1    | 0.9    | 3.4  | 3.5             | 0.8    | 0.7    | 6.7  | 5.6              | 0.0    | 0.0    | 12.1 | 8.7              | 0.8    | 0.7    | 5.6  | 4.9             | 1.3             | 1.0 |
|               | 9/17/2023       | 0.8    | 0.6    | 4.4  | 4.0             | 0.5    | 0.5    | 6.4  | 5.1              | 0.0    | 0.0    | 12.0 | 8.6              | 0.6    | 0.5    | 6.1  | 5.0             | 0.5             | 0.8 |
|               | 9/18/2023       | 1.1    | 0.8    | 4.6  | 4.4             | 0.4    | 0.4    | 5.9  | 4.6              | 0.0    | 0.0    | 12.6 | 9.1              | 0.7    | 0.6    | 6.2  | 5.2             | 0.7             | 0.9 |
|               | 9/19/2023       | 0.7    | 0.6    | 4.9  | 4.2             | 0.5    | 0.6    | 5.0  | 4.1              | 0.0    | 0.0    | 13.6 | 9.8              | 0.6    | 0.5    | 6.3  | 5.1             | 1.0             | 0.8 |
|               | 9/20/2023       | 0.4    | 0.4    | 5.4  | 4.3             | 0.8    | 0.9    | 4.3  | 3.9              | 0.0    | 0.0    | 14.6 | 10.5             | 0.5    | 0.5    | 6.6  | 5.2             | 1.0             | 0.7 |
|               | 9/21/2023       | 0.2    | 0.2    | 5.8  | 4.4             | 1.0    | 1.1    | 4.1  | 3.9              | 0.0    | 0.0    | 15.0 | 10.8             | 0.4    | 0.4    | 6.8  | 5.3             | 0.9             | 0.6 |
|               | 9/22/2023       | 0.3    | 0.3    | 5.6  | 4.3             | 1.0    | 1.1    | 4.0  | 3.9              | 0.0    | 0.0    | 15.1 | 10.9             | 0.4    | 0.4    | 6.7  | 5.3             | 1.0             | 0.7 |
|               | 9/23/2023       | 0.3    | 0.3    | 5.3  | 4.1             | 1.1    | 1.2    | 4.1  | 4.0              | 0.0    | 0.0    | 14.8 | 10.7             | 0.5    | 0.5    | 6.5  | 5.2             | 1.1             | 0.7 |
|               | 9/24/2023       | 0.3    | 0.3    | 5.5  | 4.3             | 1.1    | 1.2    | 4.2  | 4.1              | 0.0    | 0.0    | 14.6 | 10.5             | 0.5    | 0.5    | 6.7  | 5.3             | 1.0             | 0.7 |
|               | 9/25/2023       | 0.4    | 0.4    | 5.1  | 4.1             | 1.2    | 1.4    | 4.5  | 4.5              | 0.0    | 0.0    | 14.4 | 10.4             | 0.6    | 0.6    | 6.4  | 5.2             | 1.2             | 0.8 |
|               | 9/26/2023       | 0.7    | 0.6    | 4.6  | 4.0             | 1.5    | 1.6    | 4.6  | 4.8              | 0.0    | 0.0    | 13.8 | 9.9              | 0.8    | 0.8    | 6.1  | 5.2             | 1.7             | 1.1 |

CMB is the gas weighted HDDs plus 0.72 times the population weighted CDDs.

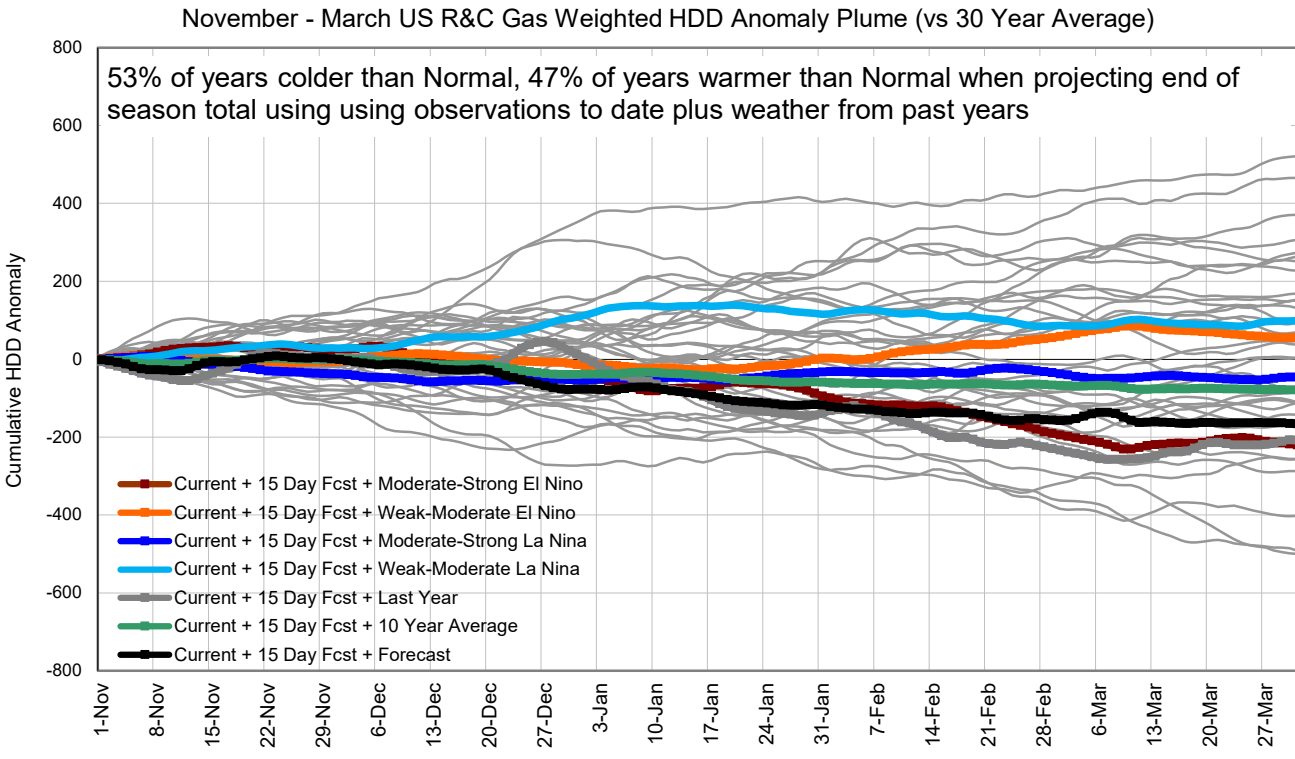
Red numbers correspond to file locations on last page.



### Seasonal HDD Projections Using Season-to-Date + 15 Day Forecast + Last 35 Years of Observed Data



| Year | May 31 Anomaly |
|------|----------------|
| 2000 | 465            |
| 2013 | 421            |
| 1995 | 393            |
| 2002 | 370            |
| 1993 | 331            |
| 1992 | 242            |
| 1996 | 236            |
| 2010 | 222            |
| 1988 | 216            |
| 2008 | 165            |
| 2018 | 122            |
| 2009 | 116            |
| 2014 | 115            |
| 2007 | 93             |
| 1989 | 65             |
| 2004 | 21             |
| 2003 | 21             |
| 2012 | 11             |
| 2006 | -23            |
| 2017 | -58            |
| 1991 | -85            |
| 1997 | -105           |
| 1994 | -132           |
| 1998 | -154           |
| 2020 | -186           |
| 2005 | -198           |
| 2001 | -206           |
| 1990 | -214           |
| Fcst | -216           |
| 2019 | -221           |
| 2021 | -264           |
| 2022 | -284           |
| 1999 | -299           |
| 2016 | -577           |
| 2015 | -578           |
| 2011 | -623           |



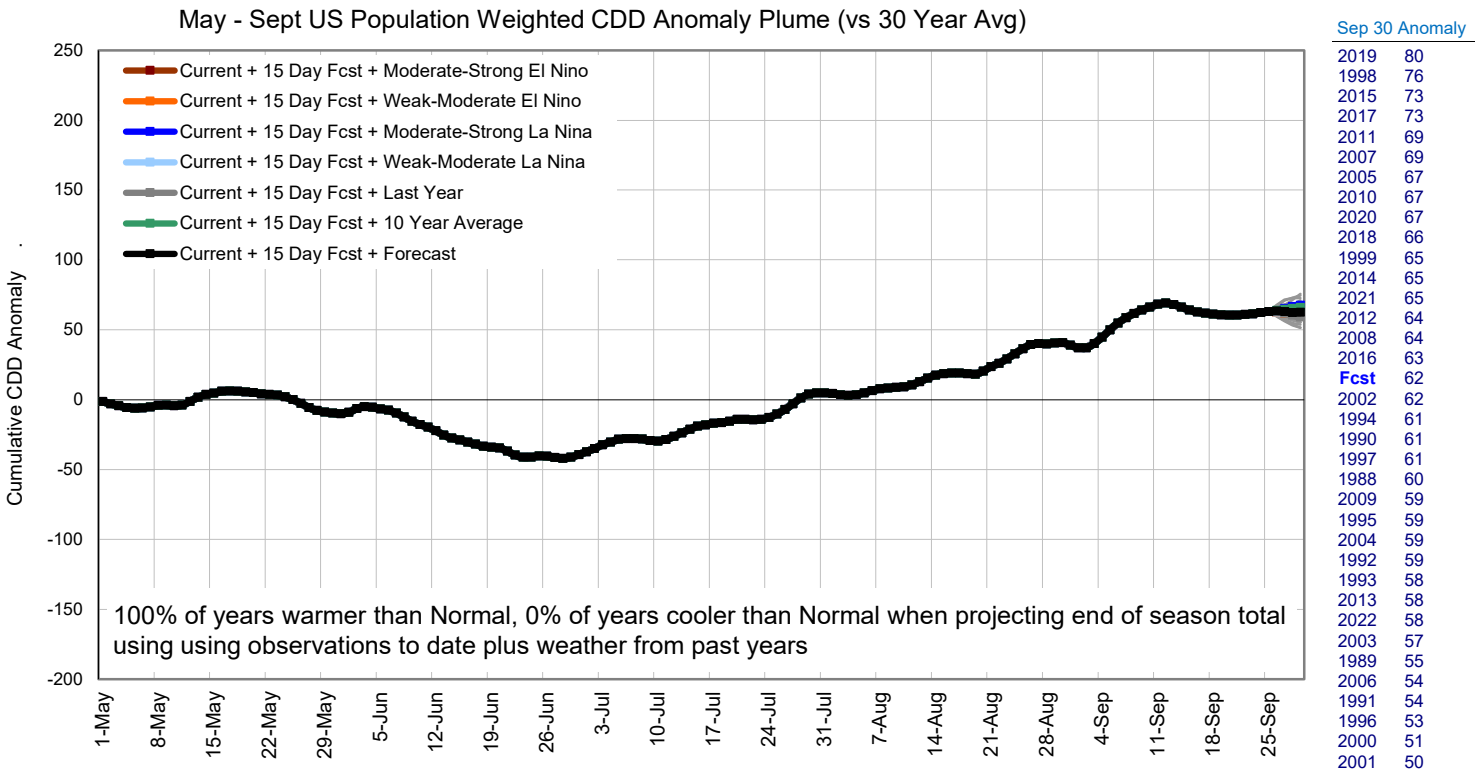
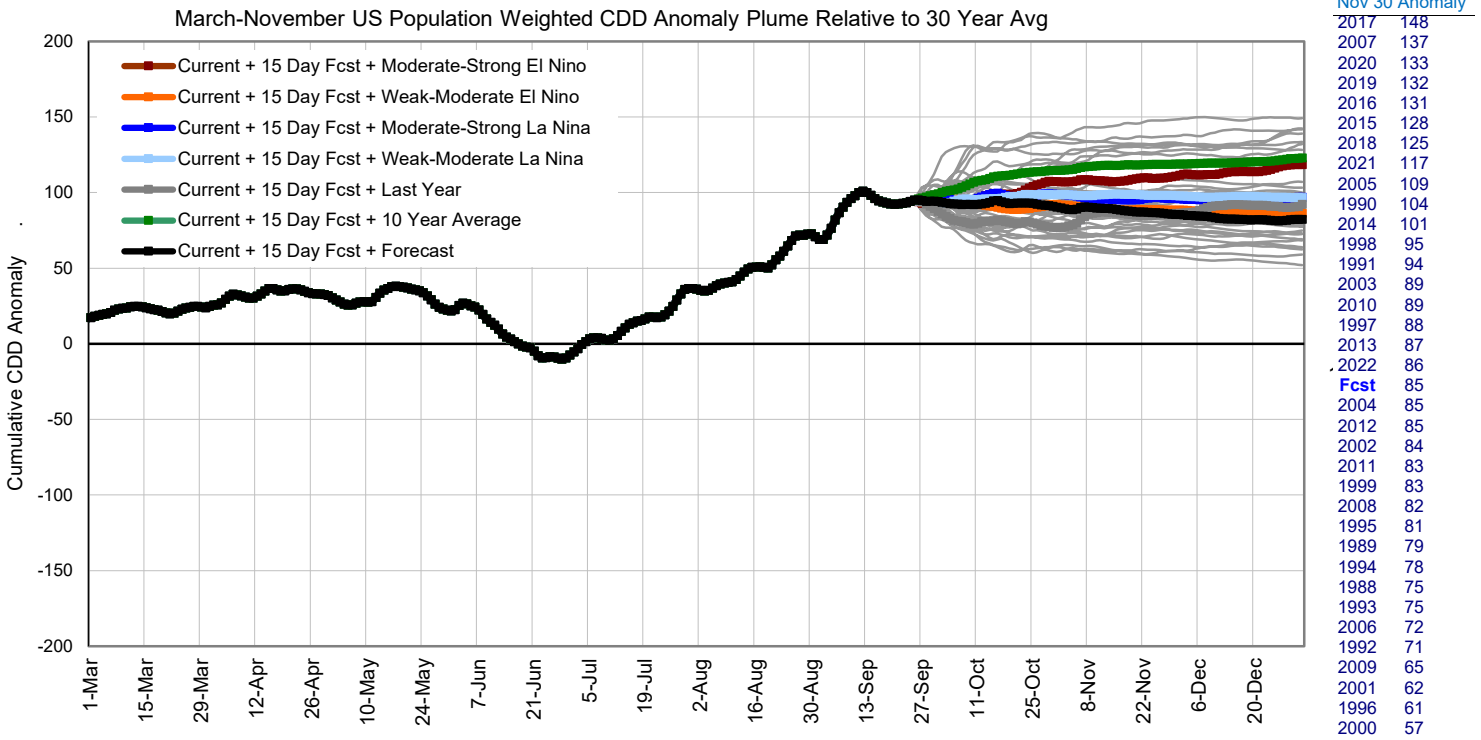
| Year | Mar 31 Anomaly |
|------|----------------|
| 2000 | 522            |
| 2013 | 465            |
| 1995 | 371            |
| 1993 | 307            |
| 2010 | 274            |
| 2002 | 264            |
| 2014 | 251            |
| 1992 | 227            |
| 2008 | 168            |
| 2018 | 154            |
| 2007 | 151            |
| 2009 | 131            |
| 1988 | 105            |
| 1996 | 94             |
| 2003 | 69             |
| 1989 | 46             |
| 2004 | 37             |
| 2012 | 3              |
| 2017 | 3              |
| 1991 | -84            |
| 1997 | -86            |
| 2006 | -88            |
| 2005 | -110           |
| 1990 | -112           |
| 1998 | -113           |
| 2021 | -143           |
| 2020 | -159           |
| 1994 | -163           |
| Fcst | -166           |
| 2022 | -208           |
| 2001 | -257           |
| 2019 | -257           |
| 1999 | -287           |
| 2016 | -403           |
| 2015 | -491           |
| 2011 | -500           |

### Seasonal Gas Weighted HDD Anomaly Plume Summary

|                        | Sep-May | Nov-Mar | Dec-Feb |                                | Sep-May | Nov-Mar | Dec-Feb |
|------------------------|---------|---------|---------|--------------------------------|---------|---------|---------|
| Current + Coldest Year | 470     | 522     | 310     | Current + Mod-Strg El Nino Avg | -251    | -221    | -211    |
| Current + Forecast     | -211    | -166    | -156    | Current + Weak-Mod El Nino Avg | 85      | 56      | 59      |
| Current + 10 Year Avg  | -145    | -79     | -65     | Current + Mod-Strg La Nina Avg | -92     | -46     | 5       |
| Current + Last Year    | -279    | -208    | -224    | Current + Weak-Mod La Nina Avg | 50      | 99      | 56      |
| Current + Warmest Year | -617    | -500    | -272    | Current + Average All Years    | -11     | 5       | 2       |



### Seasonal CDD Projection Plumes Using Season-to-Date Plus Last 35 Years of Observed Data

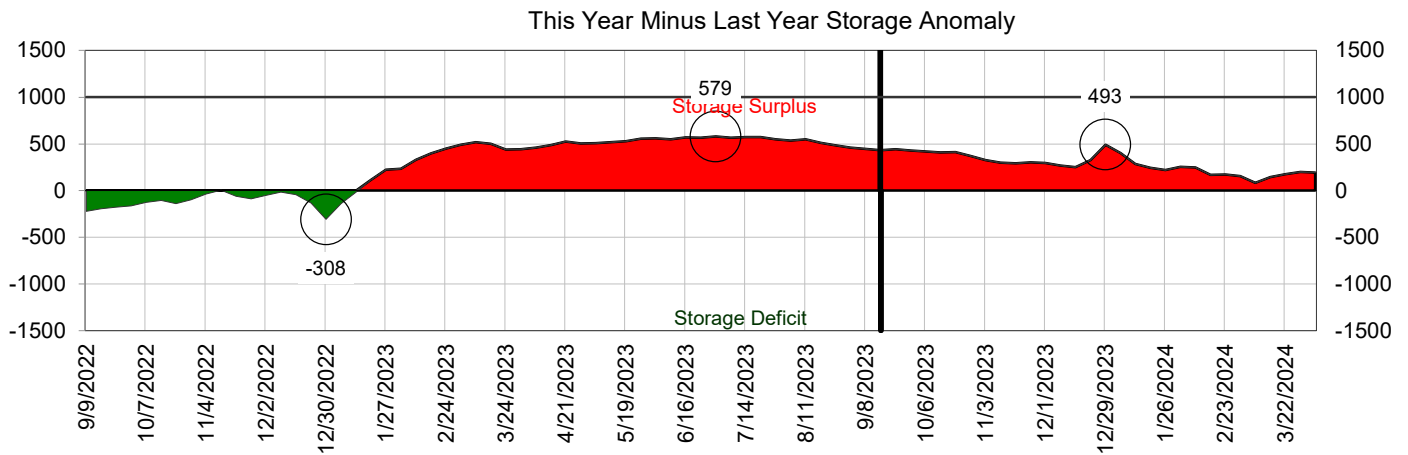
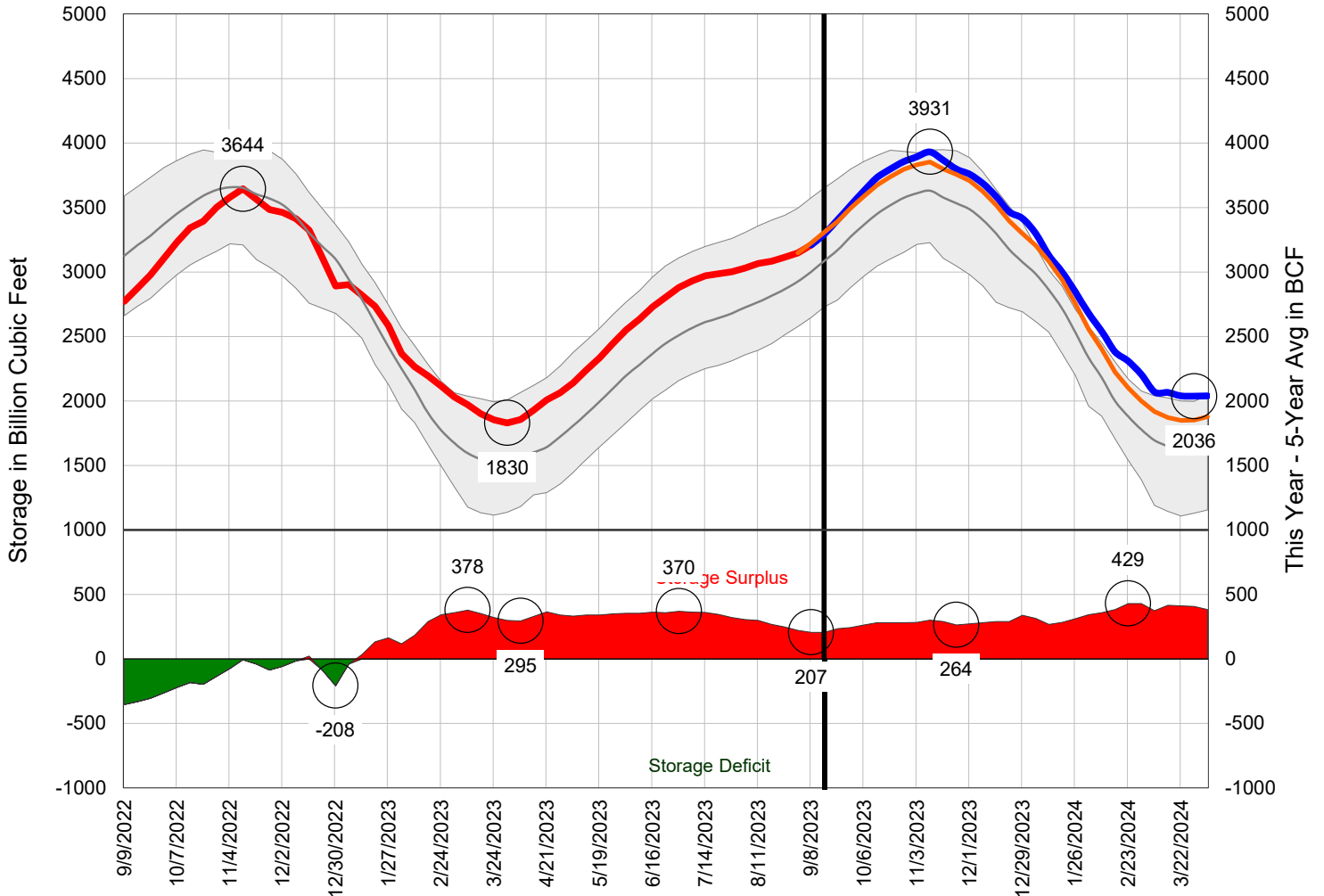


### Seasonal Population Weighted CDD Anomaly Plume Summary

|                        | Jan-Dec | May-Sep | Jun-Aug |                                | Jan-Dec | May-Sep | Jun-Aug |
|------------------------|---------|---------|---------|--------------------------------|---------|---------|---------|
| Current + Hottest Year | 149     | 80      | 86      | Current + Mod-Strg El Nino Avg | 119     | 67      | 67      |
| Current + Forecast     | 82      | 62      | 62      | Current + Weak-Mod El Nino Avg | 86      | 62      | 63      |
| Current + 10 Year Avg  | 123     | 67      | 67      | Current + Mod-Strg La Nina Avg | 97      | 68      | 68      |
| Current + Last Year    | 91      | 58      | 56      | Current + Weak-Mod La Nina Avg | 97      | 62      | 61      |
| Current + Coolest Year | 52      | 50      | 48      | Current + Average All Years    | 93      | 62      | 62      |

Below are long-range NG storage projections based on the latest Frontier Weather 15 day and seasonal forecast. The projections are based on a regression of weekly degree day totals to weekly storage numbers over the last two years. Circled areas on graphs denote observed or forecast values at those points in time.

Observed (red line) and 8 Month Forecast (blue line) Working Gas in Underground Storage Compared with 5-Year Range (grey band) and Year Minus 5-Year Storage Anomaly (Values = Frontier Forecast) Orange line uses 5 Year Avg Storage Builds/Draws as Forecast



### Power Region Temperature and Degree Day Summary 11

| <b>AEP Dayton Hub</b> | Avg High | Avg Low | Avg Avg | Total HDDs | 20YA Anom | Prev Fcst | Fcst 1WA* | 10Yr Avg | 20Yr Avg | 30Yr Avg | Total CDDs | 20YA Anom | Prev Fcst | Fcst 1WA* | 10Yr Avg | 20Yr Avg | 30Yr Avg |  |
|-----------------------|----------|---------|---------|------------|-----------|-----------|-----------|----------|----------|----------|------------|-----------|-----------|-----------|----------|----------|----------|--|
| Week Ending           |          |         |         |            |           |           |           |          |          |          |            |           |           |           |          |          |          |  |
| Fri 09/08/2023        | 86.2     | 66.8    | 76.5    | 0          | -3        | 0         | 0         | 3        | 3        | 4        | 80         | 33        | 80        | 67        | 51       | 47       | 46       |  |
| Fri 09/15/2023        | 75.2     | 55.1    | 65.1    | 11         | 5         | 14        | 4         | 8        | 7        | 7        | 12         | -19       | 12        | 6         | 37       | 31       | 31       |  |
| Fri 09/22/2023        | 77.2     | 54.5    | 65.8    | 3          | -9        | 4         | ---       | 10       | 11       | 13       | 9          | -21       | 4         | ---       | 41       | 29       | 25       |  |
| <b>Cinergy</b>        | Avg High | Avg Low | Avg Avg | Total HDDs | 20YA Anom | Prev Fcst | Fcst 1WA* | 10Yr Avg | 20Yr Avg | 30Yr Avg | Total CDDs | 20YA Anom | Prev Fcst | Fcst 1WA* | 10Yr Avg | 20Yr Avg | 30Yr Avg |  |
| Week Ending           |          |         |         |            |           |           |           |          |          |          |            |           |           |           |          |          |          |  |
| Fri 09/08/2023        | 85.8     | 67.5    | 76.6    | 0          | -2        | 0         | 0         | 2        | 2        | 2        | 82         | 24        | 82        | 72        | 63       | 58       | 57       |  |
| Fri 09/15/2023        | 77.4     | 57.3    | 67.3    | 5          | 1         | 9         | 1         | 6        | 4        | 6        | 22         | -21       | 20        | 19        | 44       | 43       | 41       |  |
| Fri 09/22/2023        | 79.6     | 56.9    | 68.3    | 1          | -7        | 1         | ---       | 6        | 7        | 10       | 23         | -17       | 15        | ---       | 51       | 40       | 34       |  |
| <b>COB</b>            | Avg High | Avg Low | Avg Avg | Total HDDs | 20YA Anom | Prev Fcst | Fcst 1WA* | 10Yr Avg | 20Yr Avg | 30Yr Avg | Total CDDs | 20YA Anom | Prev Fcst | Fcst 1WA* | 10Yr Avg | 20Yr Avg | 30Yr Avg |  |
| Week Ending           |          |         |         |            |           |           |           |          |          |          |            |           |           |           |          |          |          |  |
| Fri 09/08/2023        | 83.6     | 55.4    | 69.5    | 0          | -3        | 0         | 0         | 3        | 3        | 5        | 32         | -19       | 32        | 34        | 55       | 50       | 44       |  |
| Fri 09/15/2023        | 90.0     | 56.7    | 73.4    | 0          | -4        | 0         | 0         | 4        | 4        | 5        | 59         | 20        | 57        | 46        | 45       | 39       | 38       |  |
| Fri 09/22/2023        | 86.4     | 55.7    | 71.1    | 0          | -19       | 0         | ---       | 19       | 19       | 17       | 43         | 27        | 47        | ---       | 14       | 16       | 19       |  |
| <b>Entergy</b>        | Avg High | Avg Low | Avg Avg | Total HDDs | 20YA Anom | Prev Fcst | Fcst 1WA* | 10Yr Avg | 20Yr Avg | 30Yr Avg | Total CDDs | 20YA Anom | Prev Fcst | Fcst 1WA* | 10Yr Avg | 20Yr Avg | 30Yr Avg |  |
| Week Ending           |          |         |         |            |           |           |           |          |          |          |            |           |           |           |          |          |          |  |
| Fri 09/08/2023        | 94.0     | 74.4    | 84.2    | 0          | 0         | 0         | 0         | 0        | 0        | 0        | 134        | 24        | 134       | 135       | 118      | 110      | 109      |  |
| Fri 09/15/2023        | 89.9     | 70.6    | 80.2    | 0          | 0         | 0         | 0         | 0        | 0        | 0        | 107        | 7         | 105       | 107       | 102      | 99       | 99       |  |
| Fri 09/22/2023        | 89.5     | 69.6    | 79.6    | 0          | 0         | 0         | ---       | 0        | 0        | 0        | 102        | 5         | 97        | ---       | 107      | 97       | 95       |  |
| <b>Ercot</b>          | Avg High | Avg Low | Avg Avg | Total HDDs | 20YA Anom | Prev Fcst | Fcst 1WA* | 10Yr Avg | 20Yr Avg | 30Yr Avg | Total CDDs | 20YA Anom | Prev Fcst | Fcst 1WA* | 10Yr Avg | 20Yr Avg | 30Yr Avg |  |
| Week Ending           |          |         |         |            |           |           |           |          |          |          |            |           |           |           |          |          |          |  |
| Fri 09/08/2023        | 102.5    | 78.1    | 90.3    | 0          | 0         | 0         | 0         | 0        | 0        | 0        | 177        | 56        | 177       | 171       | 130      | 122      | 123      |  |
| Fri 09/15/2023        | 92.2     | 72.2    | 82.2    | 0          | 0         | 0         | 0         | 0        | 0        | 0        | 121        | 14        | 122       | 134       | 106      | 106      | 106      |  |
| Fri 09/22/2023        | 91.9     | 71.1    | 81.5    | 0          | 0         | 0         | ---       | 0        | 0        | 0        | 116        | 8         | 114       | ---       | 118      | 108      | 103      |  |
| <b>Four Corners</b>   | Avg High | Avg Low | Avg Avg | Total HDDs | 20YA Anom | Prev Fcst | Fcst 1WA* | 10Yr Avg | 20Yr Avg | 30Yr Avg | Total CDDs | 20YA Anom | Prev Fcst | Fcst 1WA* | 10Yr Avg | 20Yr Avg | 30Yr Avg |  |
| Week Ending           |          |         |         |            |           |           |           |          |          |          |            |           |           |           |          |          |          |  |
| Fri 09/08/2023        | 88.3     | 58.7    | 73.5    | 2          | -4        | 2         | 1         | 4        | 6        | 7        | 62         | 10        | 62        | 70        | 65       | 52       | 50       |  |
| Fri 09/15/2023        | 77.9     | 56.1    | 67.0    | 10         | -5        | 9         | 1         | 13       | 15       | 14       | 25         | -5        | 25        | 33        | 38       | 30       | 29       |  |
| Fri 09/22/2023        | 81.0     | 54.1    | 67.5    | 3          | -14       | 3         | ---       | 11       | 17       | 23       | 21         | -2        | 19        | ---       | 31       | 24       | 20       |  |
| <b>FRCC</b>           | Avg High | Avg Low | Avg Avg | Total HDDs | 20YA Anom | Prev Fcst | Fcst 1WA* | 10Yr Avg | 20Yr Avg | 30Yr Avg | Total CDDs | 20YA Anom | Prev Fcst | Fcst 1WA* | 10Yr Avg | 20Yr Avg | 30Yr Avg |  |
| Week Ending           |          |         |         |            |           |           |           |          |          |          |            |           |           |           |          |          |          |  |
| Fri 09/08/2023        | 91.4     | 75.1    | 83.2    | 0          | 0         | 0         | 0         | 0        | 0        | 0        | 128        | 4         | 128       | 128       | 128      | 124      | 122      |  |
| Fri 09/15/2023        | 91.5     | 74.9    | 83.2    | 0          | 0         | 0         | 0         | 0        | 0        | 0        | 127        | 5         | 128       | 129       | 125      | 123      | 119      |  |
| Fri 09/22/2023        | 88.5     | 73.4    | 81.0    | 0          | 0         | 0         | ---       | 0        | 0        | 0        | 112        | -7        | 113       | ---       | 120      | 119      | 117      |  |
| <b>Mead</b>           | Avg High | Avg Low | Avg Avg | Total HDDs | 20YA Anom | Prev Fcst | Fcst 1WA* | 10Yr Avg | 20Yr Avg | 30Yr Avg | Total CDDs | 20YA Anom | Prev Fcst | Fcst 1WA* | 10Yr Avg | 20Yr Avg | 30Yr Avg |  |
| Week Ending           |          |         |         |            |           |           |           |          |          |          |            |           |           |           |          |          |          |  |
| Fri 09/08/2023        | 90.8     | 67.4    | 79.1    | 3          | 3         | 3         | 3         | 0        | 0        | 1        | 102        | -45       | 102       | 104       | 154      | 146      | 136      |  |
| Fri 09/15/2023        | 93.3     | 71.6    | 82.4    | 0          | -1        | 0         | 0         | 0        | 1        | 2        | 122        | 8         | 120       | 127       | 122      | 114      | 109      |  |
| Fri 09/22/2023        | 91.6     | 69.3    | 80.4    | 1          | -3        | 1         | ---       | 4        | 4        | 4        | 109        | 12        | 108       | ---       | 103      | 97       | 93       |  |
| <b>Mid Columbia</b>   | Avg High | Avg Low | Avg Avg | Total HDDs | 20YA Anom | Prev Fcst | Fcst 1WA* | 10Yr Avg | 20Yr Avg | 30Yr Avg | Total CDDs | 20YA Anom | Prev Fcst | Fcst 1WA* | 10Yr Avg | 20Yr Avg | 30Yr Avg |  |
| Week Ending           |          |         |         |            |           |           |           |          |          |          |            |           |           |           |          |          |          |  |
| Fri 09/08/2023        | 75.5     | 55.2    | 65.4    | 11         | 1         | 11        | 9         | 8        | 10       | 13       | 13         | -8        | 13        | 14        | 27       | 22       | 18       |  |
| Fri 09/15/2023        | 79.3     | 56.3    | 67.8    | 3          | -13       | 3         | 4         | 12       | 16       | 16       | 23         | 11        | 21        | 11        | 15       | 12       | 12       |  |
| Fri 09/22/2023        | 75.0     | 54.3    | 64.7    | 14         | -18       | 10        | ---       | 26       | 32       | 31       | 12         | 8         | 14        | ---       | 3        | 3        | 5        |  |
| <b>MRO/MAPP</b>       | Avg High | Avg Low | Avg Avg | Total HDDs | 20YA Anom | Prev Fcst | Fcst 1WA* | 10Yr Avg | 20Yr Avg | 30Yr Avg | Total CDDs | 20YA Anom | Prev Fcst | Fcst 1WA* | 10Yr Avg | 20Yr Avg | 30Yr Avg |  |
| Week Ending           |          |         |         |            |           |           |           |          |          |          |            |           |           |           |          |          |          |  |
| Fri 09/08/2023        | 85.3     | 62.6    | 73.9    | 6          | -6        | 6         | 3         | 9        | 11       | 12       | 68         | 37        | 68        | 62        | 34       | 31       | 32       |  |
| Fri 09/15/2023        | 74.5     | 52.9    | 63.7    | 17         | -7        | 18        | 13        | 22       | 24       | 25       | 8          | -15       | 7         | 6         | 23       | 23       | 21       |  |
| Fri 09/22/2023        | 77.9     | 55.0    | 66.5    | 5          | -22       | 5         | ---       | 20       | 27       | 34       | 16         | -4        | 14        | ---       | 25       | 20       | 16       |  |

\* 1WA refers to the forecast value from one week ago.

20YA Anom is the DD departure from the 20 year average.

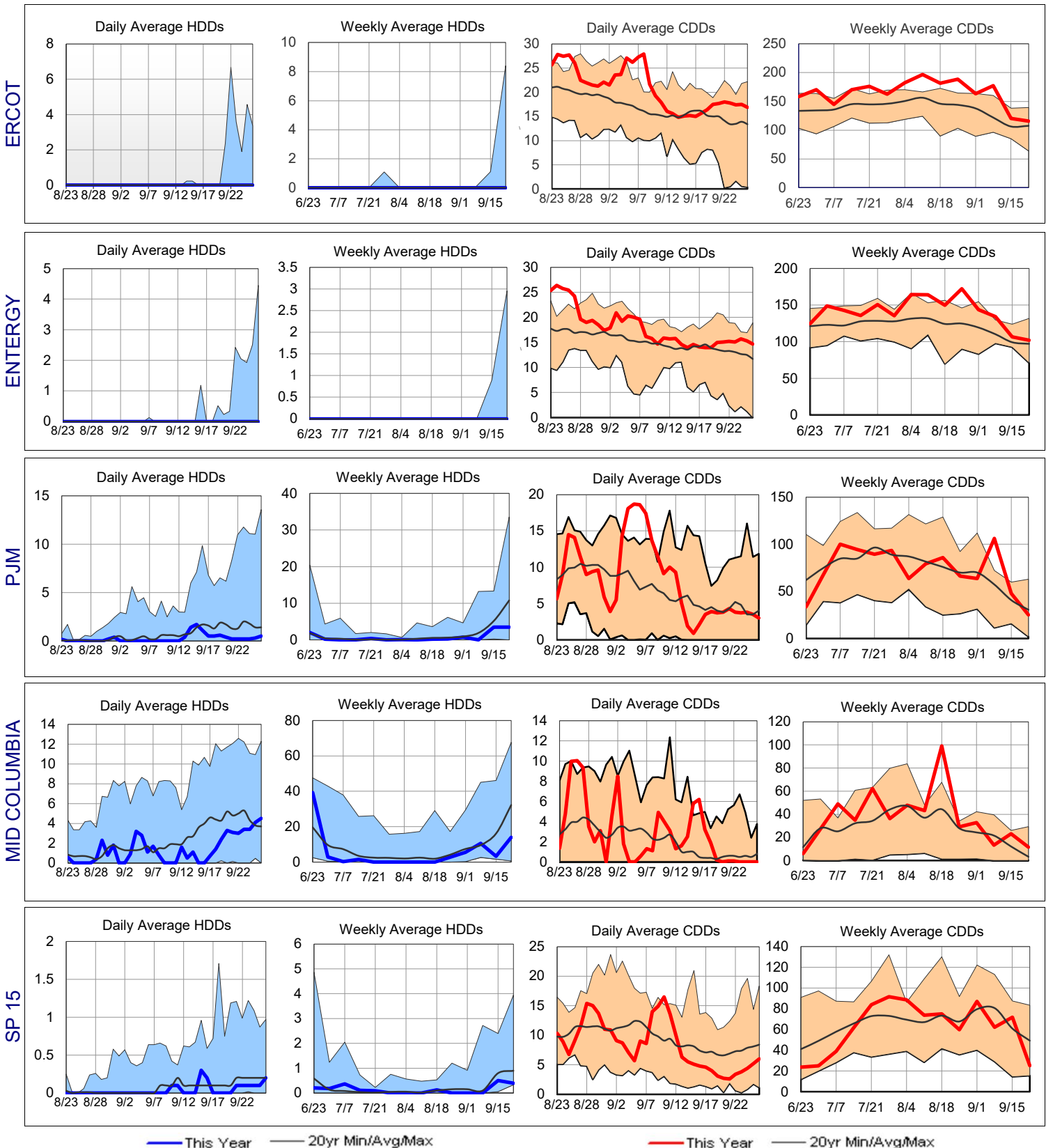
### Power Region Temperature and Degree Day Summary 11

| NEPOOL            | Avg   | Avg  | Avg  | Total | 20YA | Prev | Fcst | 10Yr | 20Yr | 30Yr | Total | 20YA | Prev | Fcst | 10Yr | 20Yr | 30Yr |
|-------------------|-------|------|------|-------|------|------|------|------|------|------|-------|------|------|------|------|------|------|
| Week Ending       | High  | Low  | Avg  | HDDs  | Anom | Fcst | 1WA* | Avg  | Avg  | Avg  | CDDs  | Anom | Fcst | 1WA* | Avg  | Avg  | Avg  |
| Fri 09/08/2023    | 86.5  | 66.1 | 76.3 | 0     | -4   | 0    | 0    | 4    | 4    | 6    | 79    | 46   | 79   | 73   | 37   | 34   | 31   |
| Fri 09/15/2023    | 76.0  | 64.5 | 70.2 | 2     | -11  | 2    | 5    | 11   | 13   | 12   | 39    | 18   | 36   | 13   | 27   | 21   | 21   |
| Fri 09/22/2023    | 74.0  | 56.1 | 65.1 | 4     | -20  | 5    | ---  | 21   | 24   | 25   | 5     | -8   | 6    | ---  | 16   | 13   | 12   |
| Northern Illinois | Avg   | Avg  | Avg  | Total | 20YA | Prev | Fcst | 10Yr | 20Yr | 30Yr | Total | 20YA | Prev | Fcst | 10Yr | 20Yr | 30Yr |
| Week Ending       | High  | Low  | Avg  | HDDs  | Anom | Fcst | 1WA* | Avg  | Avg  | Avg  | CDDs  | Anom | Fcst | 1WA* | Avg  | Avg  | Avg  |
| Fri 09/08/2023    | 84.2  | 66.8 | 75.5 | 2     | -2   | 2    | 0    | 2    | 4    | 5    | 75    | 33   | 75   | 65   | 48   | 42   | 39   |
| Fri 09/15/2023    | 73.1  | 53.9 | 63.5 | 15    | 3    | 15   | 7    | 12   | 12   | 14   | 5     | -23  | 5    | 5    | 31   | 28   | 26   |
| Fri 09/22/2023    | 77.3  | 56.6 | 67.0 | 2     | -13  | 2    | ---  | 11   | 15   | 20   | 16    | -10  | 9    | ---  | 39   | 26   | 22   |
| NP15              | Avg   | Avg  | Avg  | Total | 20YA | Prev | Fcst | 10Yr | 20Yr | 30Yr | Total | 20YA | Prev | Fcst | 10Yr | 20Yr | 30Yr |
| Week Ending       | High  | Low  | Avg  | HDDs  | Anom | Fcst | 1WA* | Avg  | Avg  | Avg  | CDDs  | Anom | Fcst | 1WA* | Avg  | Avg  | Avg  |
| Fri 09/08/2023    | 78.3  | 59.2 | 68.7 | 1     | -5   | 1    | 0    | 3    | 6    | 6    | 27    | -16  | 27   | 25   | 48   | 42   | 38   |
| Fri 09/15/2023    | 80.8  | 57.9 | 69.3 | 0     | -6   | 0    | 0    | 4    | 7    | 8    | 31    | 3    | 29   | 28   | 33   | 28   | 26   |
| Fri 09/22/2023    | 77.6  | 57.4 | 67.5 | 0     | -6   | 0    | ---  | 4    | 6    | 7    | 18    | -7   | 18   | ---  | 26   | 24   | 24   |
| NYISO             | Avg   | Avg  | Avg  | Total | 20YA | Prev | Fcst | 10Yr | 20Yr | 30Yr | Total | 20YA | Prev | Fcst | 10Yr | 20Yr | 30Yr |
| Week Ending       | High  | Low  | Avg  | HDDs  | Anom | Fcst | 1WA* | Avg  | Avg  | Avg  | CDDs  | Anom | Fcst | 1WA* | Avg  | Avg  | Avg  |
| Fri 09/08/2023    | 88.1  | 71.5 | 79.8 | 0     | -2   | 0    | 0    | 3    | 2    | 3    | 103   | 47   | 103  | 97   | 60   | 56   | 53   |
| Fri 09/15/2023    | 77.1  | 65.2 | 71.1 | 4     | -3   | 4    | 5    | 7    | 6    | 6    | 47    | 8    | 48   | 31   | 44   | 39   | 39   |
| Fri 09/22/2023    | 76.2  | 60.0 | 68.1 | 3     | -9   | 4    | ---  | 11   | 12   | 13   | 25    | -5   | 25   | ---  | 36   | 30   | 28   |
| Palo Verde        | Avg   | Avg  | Avg  | Total | 20YA | Prev | Fcst | 10Yr | 20Yr | 30Yr | Total | 20YA | Prev | Fcst | 10Yr | 20Yr | 30Yr |
| Week Ending       | High  | Low  | Avg  | HDDs  | Anom | Fcst | 1WA* | Avg  | Avg  | Avg  | CDDs  | Anom | Fcst | 1WA* | Avg  | Avg  | Avg  |
| Fri 09/08/2023    | 104.5 | 79.5 | 92.0 | 0     | 0    | 0    | 0    | 0    | 0    | 0    | 189   | 3    | 189  | 188  | 190  | 186  | 181  |
| Fri 09/15/2023    | 104.0 | 82.0 | 93.0 | 0     | 0    | 0    | 0    | 0    | 0    | 0    | 196   | 32   | 196  | 192  | 169  | 164  | 163  |
| Fri 09/22/2023    | 100.3 | 77.4 | 88.8 | 0     | 0    | 0    | ---  | 0    | 0    | 0    | 167   | 12   | 166  | ---  | 158  | 155  | 154  |
| PJM West          | Avg   | Avg  | Avg  | Total | 20YA | Prev | Fcst | 10Yr | 20Yr | 30Yr | Total | 20YA | Prev | Fcst | 10Yr | 20Yr | 30Yr |
| Week Ending       | High  | Low  | Avg  | HDDs  | Anom | Fcst | 1WA* | Avg  | Avg  | Avg  | CDDs  | Anom | Fcst | 1WA* | Avg  | Avg  | Avg  |
| Fri 09/08/2023    | 91.8  | 68.6 | 80.2 | 0     | -2   | 0    | 0    | 2    | 2    | 3    | 106   | 49   | 106  | 97   | 64   | 57   | 54   |
| Fri 09/15/2023    | 79.4  | 63.2 | 71.3 | 4     | -2   | 4    | 4    | 6    | 5    | 6    | 48    | 7    | 47   | 30   | 47   | 41   | 40   |
| Fri 09/22/2023    | 78.4  | 57.7 | 68.1 | 4     | -7   | 4    | ---  | 9    | 11   | 12   | 25    | -5   | 24   | ---  | 38   | 31   | 28   |
| Southern          | Avg   | Avg  | Avg  | Total | 20YA | Prev | Fcst | 10Yr | 20Yr | 30Yr | Total | 20YA | Prev | Fcst | 10Yr | 20Yr | 30Yr |
| Week Ending       | High  | Low  | Avg  | HDDs  | Anom | Fcst | 1WA* | Avg  | Avg  | Avg  | CDDs  | Anom | Fcst | 1WA* | Avg  | Avg  | Avg  |
| Fri 09/08/2023    | 90.0  | 69.1 | 79.5 | 0     | 0    | 0    | 0    | 0    | 0    | 0    | 102   | 8    | 102  | 102  | 102  | 94   | 91   |
| Fri 09/15/2023    | 87.8  | 68.2 | 78.0 | 0     | 0    | 0    | 0    | 0    | 0    | 0    | 91    | 7    | 90   | 89   | 89   | 84   | 82   |
| Fri 09/22/2023    | 85.9  | 63.8 | 74.8 | 0     | 0    | 0    | ---  | 0    | 0    | 0    | 69    | -6   | 64   | ---  | 82   | 75   | 73   |
| SP15              | Avg   | Avg  | Avg  | Total | 20YA | Prev | Fcst | 10Yr | 20Yr | 30Yr | Total | 20YA | Prev | Fcst | 10Yr | 20Yr | 30Yr |
| Week Ending       | High  | Low  | Avg  | HDDs  | Anom | Fcst | 1WA* | Avg  | Avg  | Avg  | CDDs  | Anom | Fcst | 1WA* | Avg  | Avg  | Avg  |
| Fri 09/08/2023    | 82.0  | 65.8 | 73.9 | 0     | 0    | 0    | 0    | 0    | 0    | 0    | 62    | -19  | 62   | 60   | 89   | 81   | 78   |
| Fri 09/15/2023    | 83.8  | 66.5 | 75.2 | 1     | 0    | 1    | 0    | 1    | 1    | 1    | 72    | 11   | 70   | 65   | 73   | 61   | 59   |
| Fri 09/22/2023    | 76.4  | 60.7 | 68.5 | 0     | -1   | 0    | ---  | 1    | 1    | 1    | 25    | -24  | 29   | ---  | 57   | 49   | 49   |
| TVA               | Avg   | Avg  | Avg  | Total | 20YA | Prev | Fcst | 10Yr | 20Yr | 30Yr | Total | 20YA | Prev | Fcst | 10Yr | 20Yr | 30Yr |
| Week Ending       | High  | Low  | Avg  | HDDs  | Anom | Fcst | 1WA* | Avg  | Avg  | Avg  | CDDs  | Anom | Fcst | 1WA* | Avg  | Avg  | Avg  |
| Fri 09/08/2023    | 88.6  | 68.6 | 78.6 | 0     | 0    | 0    | 0    | 0    | 0    | 0    | 95    | 15   | 95   | 92   | 88   | 81   | 80   |
| Fri 09/15/2023    | 84.0  | 64.1 | 74.0 | 0     | -1   | 0    | 0    | 1    | 1    | 1    | 63    | -5   | 58   | 56   | 73   | 68   | 66   |
| Fri 09/22/2023    | 83.9  | 61.1 | 72.5 | 0     | -1   | 0    | ---  | 1    | 1    | 2    | 52    | -10  | 42   | ---  | 72   | 62   | 58   |

\* 1WA refers to the forecast value from one week ago.

20YA Anom is the DD departure from the 20 year average.

## Power Region Temperature and Degree Day Summary





### Source file locations for data in various degree day tables in report

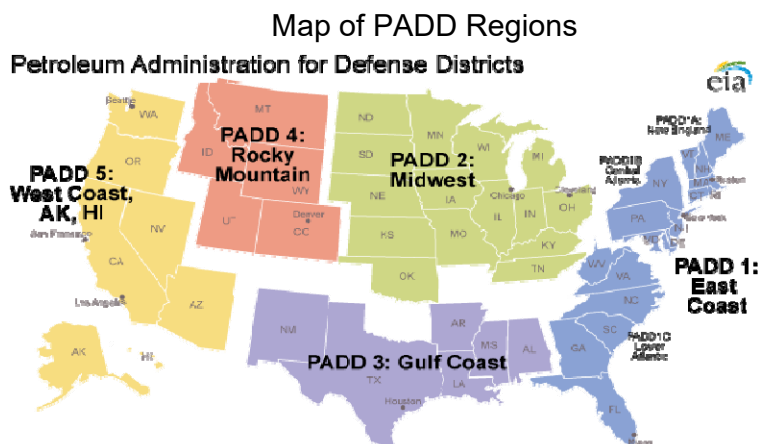
- 1 [http://frontierweather.dtn.com/degreedays/HR\\_FW\\_USPopulationWeightedData.csv](http://frontierweather.dtn.com/degreedays/HR_FW_USPopulationWeightedData.csv)
- 2 <http://frontierweather.dtn.com/degreedays/USPopWeightedbyYearDDs.txt>
- 3 [http://frontierweather.dtn.com/degreedays/HR\\_FW\\_1996\\_Forecast\\_NG\\_Elec\\_Combio\\_HDDs.csv](http://frontierweather.dtn.com/degreedays/HR_FW_1996_Forecast_NG_Elec_Combio_HDDs.csv)
- 4 Combination of number 1 for CDDs and number 3 for HDDs.
- 5 <http://frontierweather.dtn.com/degreedays/USGasWeightedbyYearDDs.txt>
- 6 [http://frontierweather.dtn.com/degreedays/HR\\_FW\\_1996\\_Forecast\\_FuelOil\\_Propane\\_HDDs.csv](http://frontierweather.dtn.com/degreedays/HR_FW_1996_Forecast_FuelOil_Propane_HDDs.csv)
- 7 [http://frontierweather.dtn.com/degreedays/HR\\_FW\\_1996\\_Forecast\\_FuelOil\\_Propane\\_HDDs\\_byPadd.csv](http://frontierweather.dtn.com/degreedays/HR_FW_1996_Forecast_FuelOil_Propane_HDDs_byPadd.csv)
- 8 [http://frontierweather.dtn.com/degreedays/HR\\_FW\\_CensusRegionPopulationWeightedData\\_alt.csv](http://frontierweather.dtn.com/degreedays/HR_FW_CensusRegionPopulationWeightedData_alt.csv)
- 9 [http://frontierweather.dtn.com/degreedays/HR\\_FW\\_CensusSubRegionPopulationWeightedData\\_alt.csv](http://frontierweather.dtn.com/degreedays/HR_FW_CensusSubRegionPopulationWeightedData_alt.csv)
- 10 [http://frontierweather.dtn.com/degreedays/HR\\_FW\\_EIARegionPopulationWeightedData\\_alt.csv](http://frontierweather.dtn.com/degreedays/HR_FW_EIARegionPopulationWeightedData_alt.csv)
- 11 <http://frontierweather.dtn.com/degreedays/L15N15PowerRegionAverages.txt>
- 12 <http://frontierweather.dtn.com/degreedays/OilweightedHDDs.txt> and [OWlast10andforecast.txt](http://frontierweather.dtn.com/degreedays/OWlast10andforecast.txt)
- 13 [http://frontierweather.dtn.com/degreedays/HR\\_FW\\_EIAFiveRegionPopulationWeightedData\\_alt.csv](http://frontierweather.dtn.com/degreedays/HR_FW_EIAFiveRegionPopulationWeightedData_alt.csv)

Above data files are password protected and only available to direct Frontier Weather subscribers.

The HR in the file name designates that it is derived from our new higher resolution population weighted data set.

The FW in the file named designates that population/gas weights for all years of data are fixed to 2010 values. A set of files with the same name, but without the "\_FW" in the file name is also available, and in those files the weights vary by year. The fixed weights are used in this report to allow for better comparison to values from previous years since differences in values are only due to differences in weather and not differences in population patterns as well.

The main difference between the new data files used in this report and the old data files used in the previous version of the report is that the U.S. and regional degree day totals are derived from 230 cities in the new data files versus 120 cities in the old files. This difference is more apparent on the regional level than the national level.



© 2020 DTN. All rights reserved. Reproduction, distribution or disclosure is prohibited.

Any unauthorized reproduction, distribution or disclosure is prohibited and may result in account termination and/or prosecution. Information contained in this report is intended solely for use by the recipient and may not be further distributed without written approval from DTN.

Users of this report agree to the following:

THE REPORT is provided by DTN "AS IS", and "AS AVAILABLE" WITHOUT WARRANTY OF ANY KIND TO USER OR ANY THIRD PARTY, INCLUDING, BUT NOT LIMITED TO, ANY EXPRESS OR IMPLIED WARRANTIES OF MERCHANTABILITY OF THE REPORT; ACCURACY OF INFORMATIONAL CONTENT; NON-INFRINGEMENT; QUIET ENJOYMENT; AND TITLE. FRONTIER WEATHER, INC. SHALL NOT BE LIABLE FOR ANY LOSS, INJURY, CLAIM, LIABILITY OR DAMAGE OF ANY KIND RESULTING IN ANY WAY FROM THE USE OF THIS INFORMATION. THE USER FURTHER AGREES THAT FRONTIER WEATHER, INC. SHALL NOT BE LIABLE TO USER OR ANY THIRD PARTY FOR ANY LOSS OF PROFITS, LOSS OF USE, INTERRUPTION OF BUSINESS, OR ANY DIRECT, INDIRECT, SPECIAL, EXEMPLARY, INCIDENTAL OR CONSEQUENTIAL DAMAGES OF ANY KIND WHETHER UNDER THIS AGREEMENT OR OTHERWISE, EVEN IF FRONTIER WEATHER, INC. WAS ADVISED OF THE POSSIBILITY OF SUCH DAMAGES OR WAS GROSSLY NEGLIGENT. In any event, DTN. shall never be liable for any amount in excess of the fees paid by the USER to DTN. hereby. Additionally, DTN. makes no warranty that the information provided in this report will be free from errors or omissions, or defects, human or mechanical.