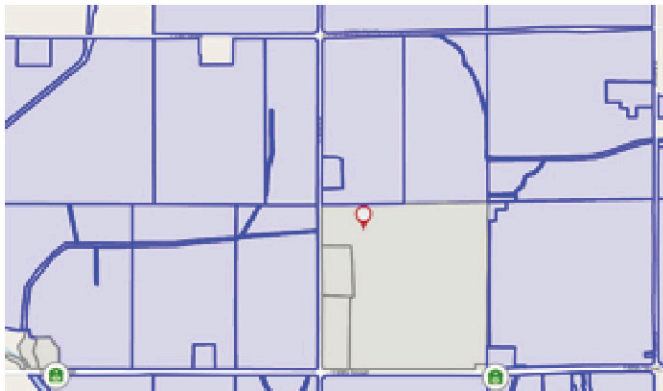


Grow your agribusiness through precise, targeted marketing and selling

Focus on the customers and prospects you choose — allowing you to market and sell with greater precision and effectiveness.

Our suite of marketing and sales applications enables you to identify your ideal customer, learn the fundamental details of their operation, and reach them with the exact solution to meet their needs.

What sets our data apart?



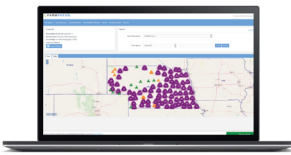
Our extensive database is drawn from dozens of public and private sources. We start with common land unit (CLU) boundaries and then attribute all of our data to those fields, rather than a generic address. We are the only source of updated, fully attributed CLU data.

That means we have more records, that are more current, accurate, and detailed than anyone else in the industry.

Grower Data Solutions for Agribusinesses

Key information

- Name, address, and county
- Phone and email address (as available)
- Producer code
- Latitude and longitude of the farm mailing address
- Related growers and relationship types
- Name and address for each related grower
- Crops and acres grown, including seven years of history
- Livestock type with herd size
- Gross farm income
- Summary codes
- Farmstead location and all field boundaries
- Zoom and scroll-over features with pop-ups showing crop and acres on each field
- Links to the location of each farm field on the map



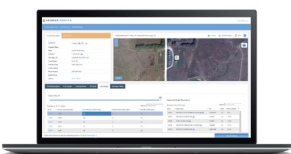
FarmFocus

- Build custom marketing audiences based on 200+ demographics
- View complete and accurate contact information, including addresses, phone, and email
- Use its maps to visualize where your prospects are located



FieldVision

- Identify nearby farmers and fields and see operational details attributed to each field
- Access your data from your phone in the field
- Filter results so you're only seeing relevant fields



Grower Profile

- Go beyond name and address to see intimate farm operation details
- Identify crop history, rotation pattern, CLU boundaries, gross farm income, and more

Empower your marketing and sales program with unmatched data.
Visit www.dtn.com/grower-profile to request more information today.