

# Energy Event Index

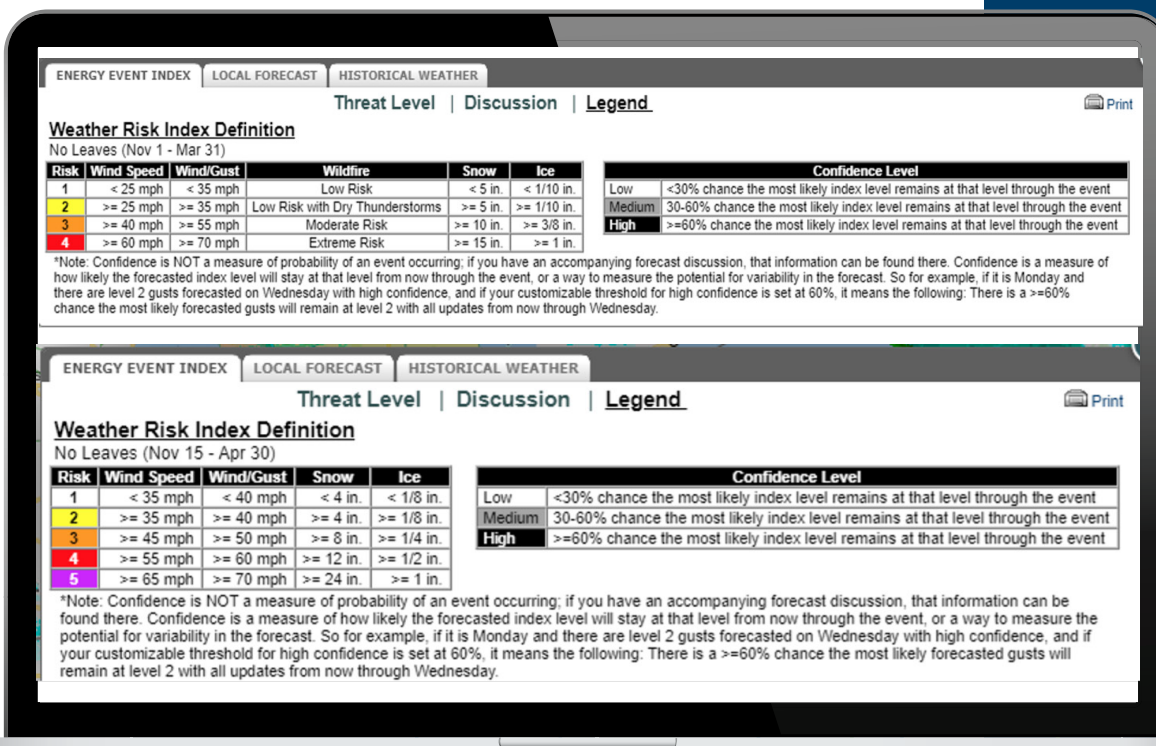
The Energy Event Index (EEI), a licensed add-on to WeatherSentry®, is a categorical, risk-based forecast for impactful weather hazards, including wind speed, wind gusts, lightning, heavy rains, snow, ice accretion, and wildfires. It provides forecasts for three and five days out, updated one to two times a day.

EEI is a human-based consultative forecast performed by our expert team of meteorologists. It also offers the option to engage in text discussions with a meteorologist, highlighting their thoughts on the forecast precisely and clearly so your team can best understand the content.

We will work with you to define a region or regions within your service territory. Depending on size, geography, topography, or breakout of operational divisions, most utilities divide their territory into multiple sections that align with their operating practices.

EEI forecasts are issued at a set time each day that you define and are accessible via email or WeatherSentry. You can further define criteria that align with your daily and emergency operational and risk mitigation plans with adjustments based on seasonal changes, such as the presence of leaves on trees.

Define criteria that align with your daily and emergency operational and risk mitigation plans.



The screenshot shows the 'Weather Risk Index Definition' interface for 'No Leaves' periods. It includes tabs for 'ENERGY EVENT INDEX', 'LOCAL FORECAST', and 'HISTORICAL WEATHER'. The main content is divided into 'Threat Level', 'Discussion', and 'Legend'. A 'Print' icon is visible in the top right corner of the content area.

**Weather Risk Index Definition**  
No Leaves (Nov 1 - Mar 31)

Risk	Wind Speed	Wind/Gust	Wildfire	Snow	Ice	Confidence Level
1	< 25 mph	< 35 mph	Low Risk	< 5 in.	< 1/10 in.	Low <30% chance the most likely index level remains at that level through the event
2	>= 25 mph	>= 35 mph	Low Risk with Dry Thunderstorms	>= 5 in.	>= 1/10 in.	Medium 30-60% chance the most likely index level remains at that level through the event
3	>= 40 mph	>= 55 mph	Moderate Risk	>= 10 in.	>= 3/8 in.	High >=60% chance the most likely index level remains at that level through the event
4	>= 60 mph	>= 70 mph	Extreme Risk	>= 15 in.	>= 1 in.	

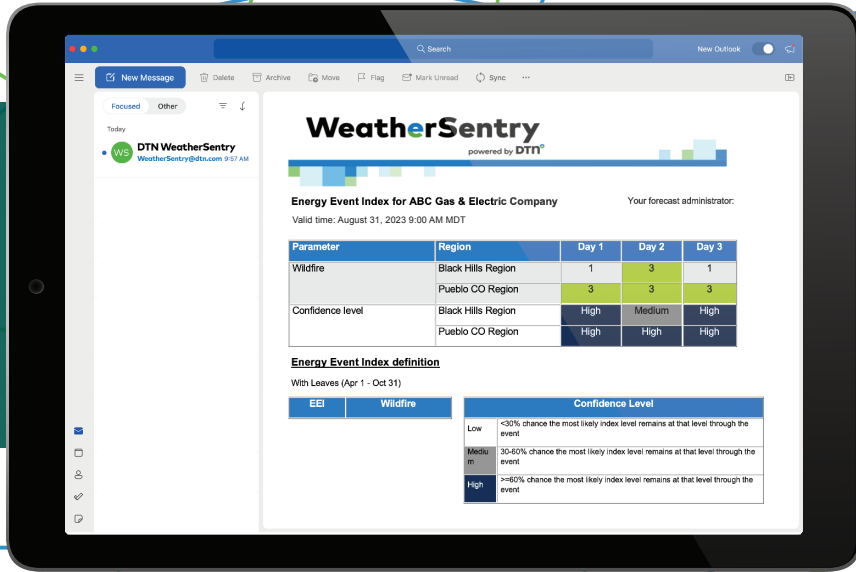
\*Note: Confidence is NOT a measure of probability of an event occurring; if you have an accompanying forecast discussion, that information can be found there. Confidence is a measure of how likely the forecasted index level will stay at that level from now through the event, or a way to measure the potential for variability in the forecast. So for example, if it is Monday and there are level 2 gusts forecasted on Wednesday with high confidence, and if your customizable threshold for high confidence is set at 60%, it means the following: There is a >=60% chance the most likely forecasted gusts will remain at level 2 with all updates from now through Wednesday.

---

**Weather Risk Index Definition**  
No Leaves (Nov 15 - Apr 30)

Risk	Wind Speed	Wind/Gust	Snow	Ice	Confidence Level
1	< 35 mph	< 40 mph	< 4 in.	< 1/8 in.	Low <30% chance the most likely index level remains at that level through the event
2	>= 35 mph	>= 40 mph	>= 4 in.	>= 1/8 in.	Medium 30-60% chance the most likely index level remains at that level through the event
3	>= 45 mph	>= 50 mph	>= 8 in.	>= 1/4 in.	High >=60% chance the most likely index level remains at that level through the event
4	>= 55 mph	>= 60 mph	>= 12 in.	>= 1/2 in.	
5	>= 65 mph	>= 70 mph	>= 24 in.	>= 1 in.	

\*Note: Confidence is NOT a measure of probability of an event occurring; if you have an accompanying forecast discussion, that information can be found there. Confidence is a measure of how likely the forecasted index level will stay at that level from now through the event, or a way to measure the potential for variability in the forecast. So for example, if it is Monday and there are level 2 gusts forecasted on Wednesday with high confidence, and if your customizable threshold for high confidence is set at 60%, it means the following: There is a >=60% chance the most likely forecasted gusts will remain at level 2 with all updates from now through Wednesday.

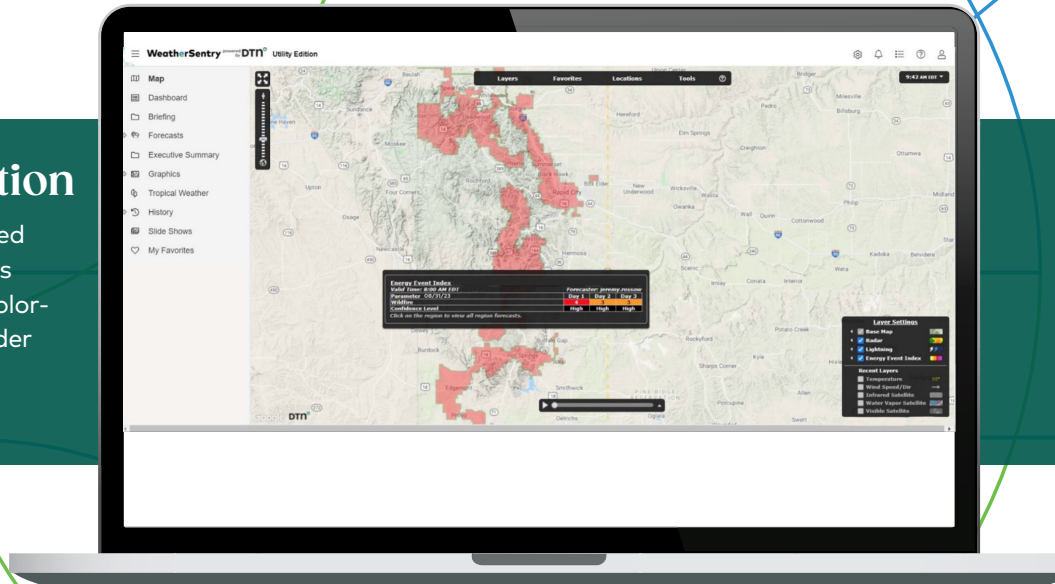


## An example EEI forecast email

We email forecasts to your inbox each day at agreed-upon times, and include weather hazard risk scores, forecast confidence, and forecast text discussions. This ensures all stakeholders across your organization are on the same page when preparing your operations for expected weather threats.

## WeatherSentry application

In addition to emails, you can view detailed information directly in WeatherSentry. Its interactive map shows the EEI risk in a color-coded table and the areas of interest under the event's risks.



[www.dtn.com](http://www.dtn.com)